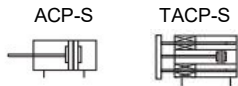


Symbol



Product feature

1. DIN standard cylinder.
2. The cylinder body connects with the threads of the front and back cover, forming high strength and convenient maintenance.
3. The internal diameter of the body is treated with rolling followed by the treatment of hard anodizing, forming an excellent abrasion resistance and durability.
4. The seal of piston adopts heterogeneous two-way seal structure. It has compact dimension and the function of oil reservation.
5. Compact structure can effectively save fifty percent installation space.
6. There are magnetic switch slots around the cylinder body, which is convenient to install inducting switch.
8. Installing accessories with various specifications are optional.

Specification

Bore size (mm)	12	16	20	25	32	40	50	63	80	100
Acting type	Double acting									
Fluid	Air (to be filtered by 40 μm filter element)									
Operating pressure	0.1 ~ 1.0MPa (15 ~ 145psi)(1.0 ~ 10.0bar)									
Proof pressure	1.5 Mpa (215psi)(15bar)									
Temperature °C	-20 ~ 80									
Speed range mm/s	30 ~ 500									
Stroke tolerance	0 ~ 150 0(+1.0) > 150 0(+1.4)									
Cushion type	Bumper									
Port size [Note 1]	M5 x 0.8				1/8"				1/4"	

[Note 1] G thread is available.

Add) Refer to P528 for detail of sensor switch.

Stroke

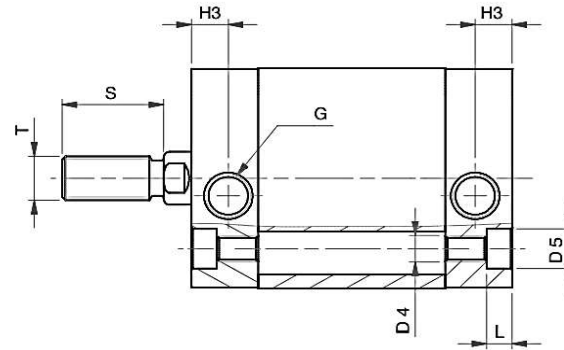
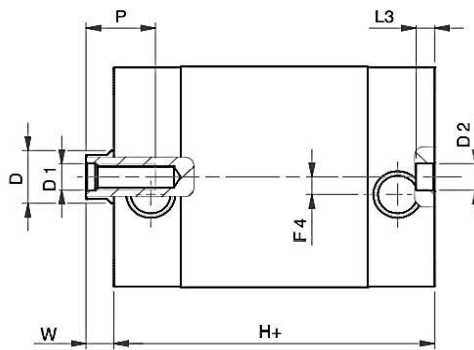
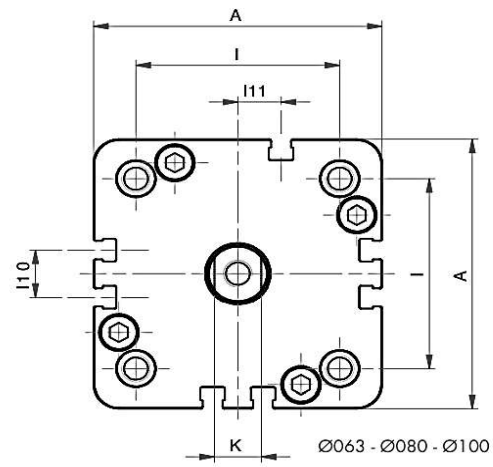
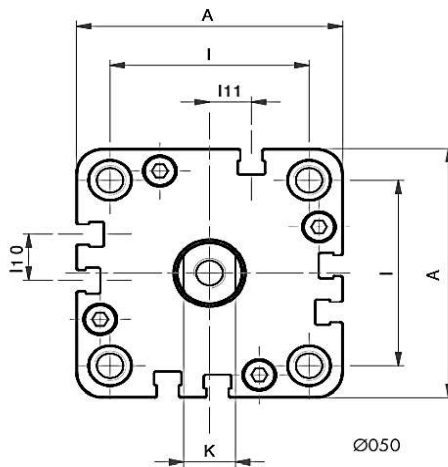
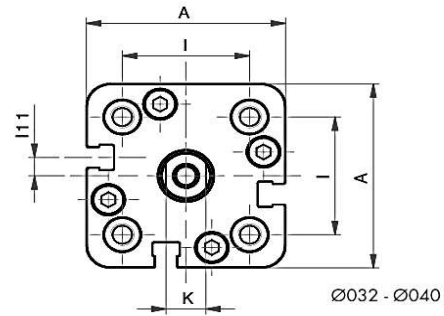
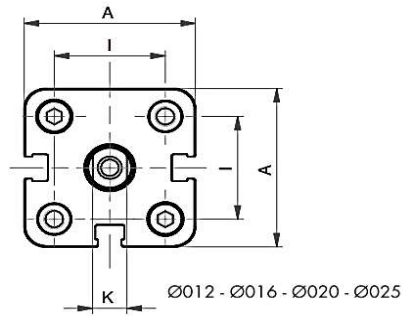
Bore size (mm)		Standard stroke (mm)										Max.Stroke
ACP (Double acting)	12 16	5 10 15 20 25 30 40 50 60 70 75 80 90 100 125	250									
	20 25	160 200 250										
ACP (Double acting)	32 40 50	5 10 15 20 25 30 40 50 60 70 75 80 90 100 125	400									
	63 80 100	160 200 250 300 350 400										
TACP (Double acting non-rotating with yoke)	16 20 25	5 10 15 20 25 30 40 50 60 70 75 80 90 100 125	200									
		160 200										
TACP (Double acting non-rotating with yoke)	32 40 50	5 10 15 20 25 30 40 50 60 70 75 80 90 100 125	400									
	63 80 100	160 200 250 300 350 400										

[Note] Please contact the company for other special strokes.

Ordering code

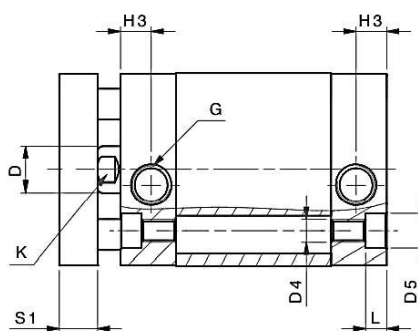
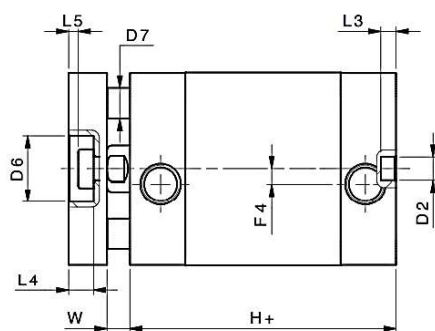
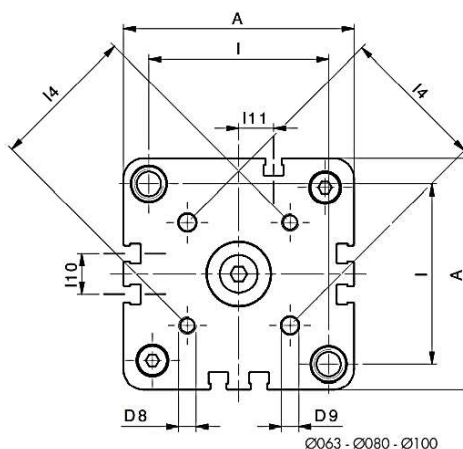
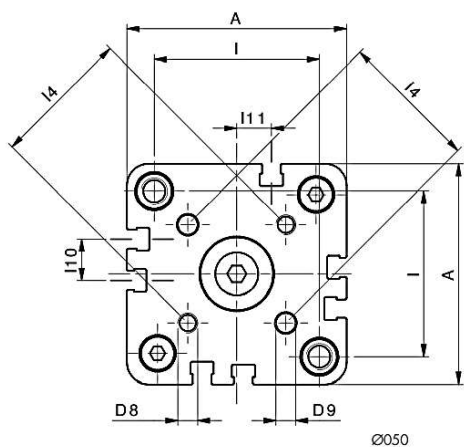
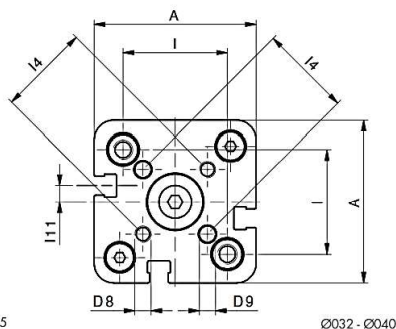
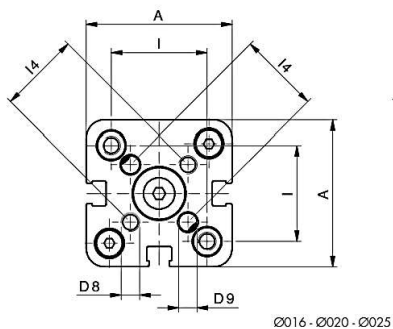
① Model	② Bore size	③ Stroke	④ Magnet	⑤ Rod type	⑥ Thread type [Note 2]
ACP (Double acting)	12 16 20 25 32 40 50 63 80 100	Refer to stroke table for details	S: With magnet	Blank: Female thread B: Male thread	G: G Thread
TACP (Double acting non-rotating with yoke)	16 20 25 32 40 50 63 80 100			No this code	





Bore size	A	ØD	D1	ØD2	D4	ØD5	F4	G	H+	H3	I	I10	I11	K	L	L3	P	S	T	W
12	29	6	M3	6	M4	6	-	M5	38	8	18	-	-	5	3,5	4	8	16	M6	4,5
16	29	8	M4	6	M4	6	-	M5	38	8	18	-	-	6	3,5	4	11	20	M8	4,5
20	36	10	M5	6	M5	7,5	-	M5	38	8	22	-	-	8	4,5	4	12	22	M10x1.25	4,5
25	40	10	M5	6	M5	7,5	-	M5	39,5	8	26	-	-	8	4,5	4	12	22	M10x1.25	5,5
32	50	12	M6	6	M6	9	4	G1/8	44,5	8	32	-	5	10	5,5	4	15	22	M10x1.25	6
40	58	12	M6	6	M6	9	3	G1/8	45,5	8	42	-	3	10	5,5	4	15	22	M10x1.25	6,5
50	67	16	M8	6	M8	10,5	-	G1/8	45,5	8	50	12,5	10,5	13	6,5	4	17	24	M12x1.25	7,5
63	80	16	M8	8	M10	13,5	-	G1/8	50	8	62	14	12	13	8,5	4	17	24	M12x1.25	7,5
80	100	20	M10	8	M10	13,5	-	G1/8	56	8,5	82	18	12	17	8,5	4	17	32	M16x1.5	8
100	124	25	M12	8	M10	13,5	-	G1/4	66,5	10,5	103	35	17,5	22	8,5	4	22	40	M20x1.5	10

+ = add stroke length (mm)



Bore size	A	ØD	ØD2	D4	ØD5	ØD6	ØD7	D8	ØD9	F4	G	H+	H3	I	I4	I10	I11	K	L	L3	L4	L5	S1	W
16	29	8	6	M4	6	9	5	M3	3	-	M5	38	8	18	14	-	-	6	3,5	4	3,8	1	6	4,5
20	36	10	6	M5	7,5	11	5	M4	4	-	M5	38	8	22	17	-	-	8	4,5	4	5	1,5	8	4,5
25	40	10	6	M5	7,5	14	6	M5	5	-	M5	39,5	8	26	22	-	-	8	4,5	4	5	1,5	8	5,5
32	50	12	6	M6	9	17	8	M5	5	4	G1/8	44,5	8	32	28	-	5	10	5,5	4	6,5	2,5	10	6
40	58	12	6	M6	9	17	10	M5	5	3	G1/8	45,5	8	42	33	-	3	10	5,5	4	6,5	2,5	10	6,5
50	67	16	6	M8	10,5	22	10	M6	6	-	G1/8	45,5	8	50	42	12,5	10,5	13	6,5	4	7,5	2,5	12	7,5
63	80	16	8	M10	13,5	22	10	M6	6	-	G1/8	50	8	62	50	14	12	13	8,5	4	7,5	2,5	12	7,5
80	100	20	8	M10	13,5	28	14	M8	8	-	G1/8	56	8,5	82	65	18	12	17	8,5	4	9	3	14	8
100	124	25	8	M10	13,5	30	14	M10	10	-	G1/4	66,5	10,5	103	80	35	17,5	22	8,5	4	10	3	14	10

+ = add stroke length (mm)

