

MA



Accessori standard INOX AISI 316 bassa pressione



INOX AISI 316 standard accessories low pressure



Standardverschraubungen Edelstahl AISI 316 niederdruck



Accessoires standard INOX AISI 316 basse pression



Accesorios estándar INOX AISI 316 bajo presión

MAX50K



MAX52K



MAX53



MAX53-304



MAX54K



MAX56



MAX57K



MAX58



MAX59



MAX62



MAX45K

NEW



MAX60K



MAX61



MAX64



MAX65



MAX66K



MAX16F

NEW



MAX16

NEW



MAX69K



MAX69



MAX55K



MAX55K-304



MAX70



MAX74



MAX77



MAX78

NEW



MAX90



Dati tecnici di Accessori standard INOX AISI 316 bassa pressione



INOX AISI 316 standard accessories low pressure technical data



Technischen Daten der Standardverschraubungen Edelstahl AISI 316 niederdruck



Données techniques des Accessoires standard INOX AISI 316 basse pression



Datos técnicos de los Accesorios estándar INOX AISI 316 bajo presión



Caratteristiche principali

1. Gamma completa M5 - 1"
2. Filettatura BSPP cilindrica UNI-ISO228 (con O-Ring), BSPT conica UNI-ISO 7 teflonata, Metrica ISO/R 262
3. Guarnizione in NBR Silicon free
4. Compatibilità numerosi fluidi industriali
5. Vasta gamma
6. Robustezza meccanica



Principales caractéristiques

1. Gamme complète M5 - 1"
2. Filetage BSPP cylindrique UNI-ISO228 (avec joint torique), BSPT conique UNI-ISO 7 avec téflon, ISO/R 262 métrique
3. Garniture NBR sans silicone
4. Tous fluides compatibles
5. Large gamme
6. Résistance mécanique



Main features

1. Complete Range M5 - 1"
2. Threading BSPP cylindrical UNI-ISO228 (with O-Ring), BSPT conical teflon-coated UNI-ISO 7, ISO/R 262 metric
3. Silicon free NBR seal
4. All Fluids compatible
5. Wide range
6. Mechanical Resistance



Características principales

1. Gama completa M5-1"
2. Roscado BSPP cilíndrica UNI-ISO228 (con junta tórica), BSPT cónica UNI-ISO 7 con teflón, métrica ISO/R 262
3. Guarnición en NBR sin silicona
4. Compatibilidad con numerosos fluidos industriales
5. Amplia gama
6. Robustez mecánica



Hauptmerkmale

1. Vollständiges Sortiment M5 - 1"
2. BSPP zylindrisches Gewinde UNI-ISO228 (mit O-Ring), teflonbeschichtet UNI-ISO 7 BSPT, metrische ISO/R 262
3. Silikonfreie NBR-Dichtung
4. Kompatibel mit allen Medien
5. Große Auswahl
6. Mechanische Festigkeit

Applicazioni

1. Impianti per automazione pneumatica
2. Gas inerti, fluidi
3. Circuiti acqua industriale

Applications

1. Systèmes d'automatisation pneumatique
2. Gaz inertes, fluides
3. Circuits d'eau industrielle

Applications

1. Pneumatic automation systems
2. Inert gases, fluids
3. Industrial water circuits

Aplicaciones

1. Los sistemas neumáticos de automatización
2. Gases inertes, fluidos
3. Circuitos de agua industriales

Anwendungen

1. Pneumatische Automatisierungssysteme
2. Inerte Gase, Flüssigkeiten
3. Industrielle Wasserkreisläufe

Materiali

Corpo: Acciaio INOX AISI 316 microfuso

Matériels

Corps: Acier inoxydable AISI 316 micromoulé

Materials

Body: AISI 316 microcast stainless steel






Materiales

Cuerpo: Acero inoxidable AISI 316 micro-fundido

Werkstoffen

Körper: Edelstahl AISI 316 Feinguss

 Pressione e temperatura	 Pressure and Temperature	 Druck und Temperatur	 Pression et Température	 Presión y Temperatura
Pressione: 16 Bar	Pressure: 16 Bar	Druck: 16 Bar	Pression: 16 Bar	Presión: 16 Bar
Temperatura: -20°C / +180°C	Temperature: -4°F / +356°F	Temperatur: -20°C / +180°C	Température: -20°C / +180°C	Temperatura: -20°C / +180°C

 Filettatura	 Thread types	 Gewinde	 Filetage	 Roscado
BSPP cilindrica UNI-ISO228	BSPP parallel UNI-ISO228	BSPP zylindrisch UNI-ISO228	BSPP cylindrique UNI-ISO228	BSPP cilíndrico UNI-ISO 228
BSPT conica UNI-ISO 7	BSPT taper UNI-ISO 7	BSPT konische UNI-ISO 7	BSPT conique UNI-ISO7	Recubrimiento BSPT UNI-ISO 7

Filetti

Filettature da 1/8" a 4"

Filets

Filetages de 1/8" à 4"

Threads

Threads from 1/8" to 4"

Roscas

Roscas de 1/8" a 4"

Gewinde

Gewinde von 1/8" bis 4"



Note

Le quote inserite di seguito sono INDICATIVE e NON VINCOLANTI

Attention

Les quotas indiqués ci-dessous sont INDICATIFS et NON OBLIGATOIRES

Warning

The quotas given below are INDICATIVE and NOT BINDING

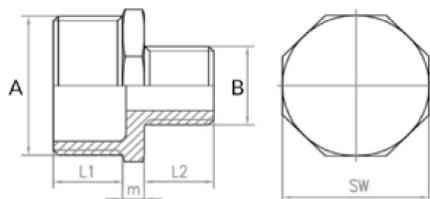
Atención

Las cuotas que figuran a continuación son INDICATIVAS y NO VINCULANTES

Achtung

Die nachstehenden Quoten sind INDIKATORISCH und NICHT BINDEND

MAX 50K

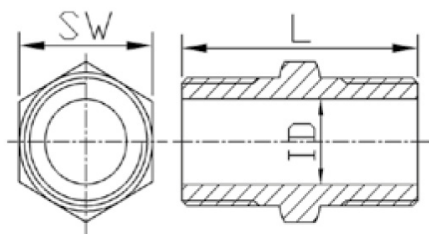


Nipplo conico ridotto

- Reduced nipple taper
- Reduziert Nippel konisches Gewinde
- Mamelon double inégal, conique
- Machón cónico de reducción

CODICE/CODE	A	B	L1	L2	m	SW	PEZZI/PIECES
MAX50K1418	R1/4	R1/8	10,5	8	4	14	10
MAX50K3818	R3/8	R1/8	-	11	-	18	10
MAX50K3814	R3/8	R1/4	11	10,5	5	18	10
MAX50K1214	R1/2	R1/4	14,5	10,5	5	22	10
MAX50K1238	R1/2	R3/8	14,5	11	5	22	10
MAX50K3438	R3/4	R3/8	-	14	-	28	10
MAX50K3412	R3/4	R1/2	15,5	14,5	5,5	28	10
MAX50K0112	R1"	R1/2	18	14,5	6	34	1
MAX50K0134	R1"	R3/4	18	15,5	6	34	1
MAX50K4112	R1"1/4	R1/2	20,5	14,5	6,5	43,3	1
MAX50K4134	R1"1/4	R3/4	20,5	15,5	6,5	43,3	1
MAX50K4101	R1"1/4	R1"	20,5	18	6,5	43,3	1
MAX50K2134	R1"1/2	R3/4	-	21	-	50	1
MAX50K2101	R1"1/2	R1"	20,5	18	6,5	49	1
MAX50K2141	R1"1/2	R1"1/4	20,5	20,5	6,5	49	1
MAX50K0201	R2"	R1"	25	18	7	61,5	1
MAX50K0221	R2"	R1"1/2	27	20,5	7	61,5	1

MAX 52K

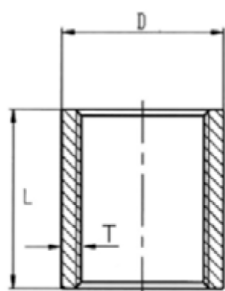


Nipplo conico

- Nipple taper
- Nippel konisches Gewinde
- Mamelon double conique
- Machón cónico

CODICE/CODE	F"	L	ID	SW	PEZZI/PIECES
MAX52K1818	R1/8	20	5,5	11	10
MAX52K1414	R1/4	25	9	14	10
MAX52K3838	R3/8	27	11,5	18	10
MAX52K1212	R1/2	34	15,5	22	10
MAX52K3434	R3/4	36,5	20,8	28	10
MAX52K0101	R1"	42	26,5	34	1
MAX52K0114	R1"1/4	47,5	35,4	43,3	1
MAX52K0112	R1"1/2	47,5	41	49	1
MAX52K0202	R2"	57	52	61,5	1
MAX52K0212	R2"1/2	61	66,5	77	1
MAX52K0303	R3	67,5	79,2	90	1
MAX52K0404	R4	80	103,7	115	1

MAX 53

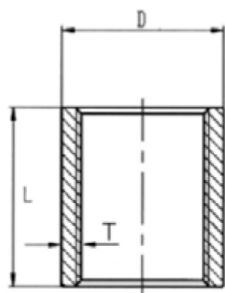


Manicotto INOX AISI 316

- INOX AISI 316 Sleeve
- Muffe INOX AISI 316
- Manchon INOX AISI 316
- Manguito INOX AISI 316

CODICE/CODE	F"	D	L	T	PEZZI/PIECES
MAX531818	G1/8	14	18	2,7	10
MAX531414	G1/4	18	24	3,2	10
MAX533838	G3/8	20,5	29	2,7	10
MAX531212	G1/2	24,5	32	2,85	10
MAX533434	G3/4	30	34	2,85	10
MAX530101	G1"	37	41	3,3	1
MAX530114	G1"1/4	46,5	47	3,7	1
MAX530112	G1"1/2	51,5	47	3,25	1
MAX530202	G2"	67	61	5,05	1
MAX530212	G2"1/2	84,5	70	5,95	1
MAX530303	G3"	96	75	5,3	1
MAX530404	G4"	125	86	7,3	1

MAX 53-304



Manicotto INOX AISI 304

INOX AISI 304 Sleeve

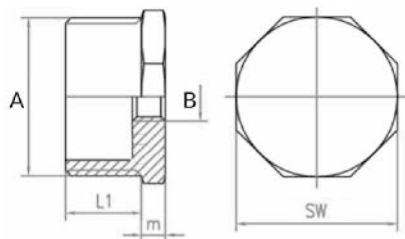
Muffe INOX AISI 304

Manchon INOX AISI 304

Manguito INOX AISI 304

CODICE/CODE	F"	D	L	PEZZI/PIECES
MAX531818304	G1/8	14	20	10
MAX531414304	G1/4	18	24	10
MAX533838304	G3/8	22	24	10
MAX531212304	G1/2	27	25	10
MAX533434304	G3/4	33	30	10
MAX530101304	G1"	40	34	1
MAX530114304	G1"1/4	48	36	1
MAX530112304	G1"1/2	56	38	1
MAX530202304	G2"	68	42	1
MAX530212304	G2"1/2	84	48	1
MAX530303304	G3"	100	50	1
MAX530404304	G4"	124	55	1

MAX 54K



Riduzione maschio-femmina conico

Taper reducer male-female

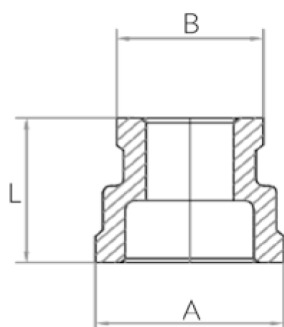
Reduzierung Außen/Innengewinde konisches Gewinde






Réduction, conique

Reducción cónica

CODICE/CODE	F"	F1"	L1	m	SW	PEZZI/PIECES
MAX54K1418	R1/4	G1/8	10,5	5	14	10
MAX54K3814	R3/8	G1/4	11	5	18	10
MAX54K1214	R1/2	G1/4	14,5	5	22	10
MAX54K1238	R1/2	G3/8	14,5	5	22	10
MAX54K3438	R3/4	G3/8	15,5	5,5	28	10
MAX54K3412	R3/4	G1/2	15,5	5,5	28	10
MAX54K0138	R1"	G3/8	-	-	-	1
MAX54K0112	R1"	G1/2	18	6	34	1
MAX54K0134	R1"	G3/4	18	6	34	1
MAX54K4101	R1"1/4	G1"	20	6,5	43,5	1
MAX54K2134	R1"1/2	G3/4	20	6,5	49	1
MAX54K2101	R1"1/2	G1"	20	6,5	49	1
MAX54K2141	R1"1/2	G1"1/4	20	6,5	49	1
MAX54K0201	R2"	G1"	24	7	61,7	1
MAX54K0241	R2"	G1"1/4	24	7	61,7	1
MAX54K0221	R2"	G1"1/2	24	7	61,7	1
MAX54K2221	R2"1/2	G1"1/2	26	7	77	1
MAX54K2202	R2"1/2	G2"	26	7	77	1
MAX54K0302	R3"	G2"	29	7,5	90	1
MAX54K0322	R3"	G2"1/2	29	7,5	90	1
MAX54K0403	R4"	G3"	35	8	115	1

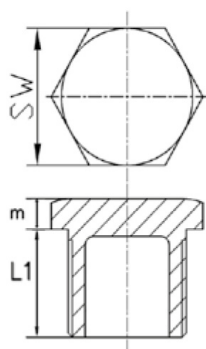
MAX 56








-  **Manicotto ridotto**
-  Reducing sleeve
-  Muffe Reduziert
-  Manchon inégal
-  Manguito de reducción

CODICE/CODE	F"	F1"	A	B	L	PEZZI/PIECES
MAX563814	G3/8	G1/4	19,5	15,7	26	10
MAX561214	G1/2	G1/4	25,2	15,7	34	10
MAX561238	G1/2	G3/8	25,2	19,5	34	10
MAX563438	G3/4	G3/8	30,7	19,5	36	10
MAX563412	G3/4	G1/2	30,7	25,2	36	10
MAX560112	G1"	G1/2	38,2	25,2	42	1
MAX560134	G1"	G3/4	38,2	30,7	42	1
MAX564134	G1"1/4	G3/4	47,4	30,7	48	1
MAX564101	G1"1/4	G1"	47,4	38,2	48	1
MAX562101	G1"1/2	G1"	53,5	38,2	52	1
MAX562141	G1"1/2	G1"1/4	53,5	47,4	52	1
MAX560221	G2"	G1"1/2	65,5	53,5	58	1

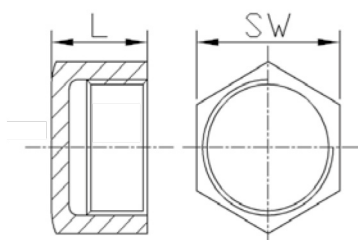
MAX 57K




-  **Tappo maschio conico**
-  Taper male plug
-  Stopfen konisches Gewinde
-  Bouchon à 6 pans mâle, conique
-  Tapón macho cónico

CODICE/CODE	F"	L1	m	SW	PEZZI/PIECES
MAX57K0018	R1/8	8	4	11	10
MAX57K0014	R1/4	10,5	4	14	10
MAX57K0038	R3/8	11	5	18	10
MAX57K0012	R1/2	14,5	5	22,5	10
MAX57K0034	R3/4	15,5	5,5	28	10
MAX57K0001	R1"	18	6	35	1
MAX57K0114	R1"1/4	20,5	6,5	43,5	1
MAX57K0112	R1"1/2	20,5	6,5	49	1
MAX57K0002	R2"	25	7	62	1
MAX57K0212	R2"1/2	27	7	77,5	1
MAX57K0003	R3"	30	7,5	90,5	1
MAX57K0004	R4"	36	8	116	1

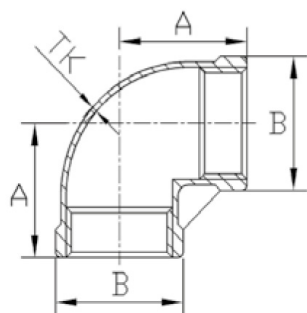
MAX 58



-  **Tappo femmina**
-  Female plug
-  Kappe
-  Bouchon femelle
-  Tapón hembra

CODICE/CODE	F"	L	SW	PEZZI/PIECES
MAX580018	G1/8	12,5	12,5	10
MAX580014	G1/4	16	15	10
MAX580038	G3/8	16,5	19	10
MAX580012	G1/2	18,5	24,5	10
MAX580034	G3/4	19,5	30	10
MAX580001	G1"	22,5	37,5	1
MAX580114	G1"1/4	25,5	46,5	1
MAX580112	G1"1/2	25,5	52,5	1
MAX580002	G2"	30	64,5	1
MAX580212	G2"1/2	35	80	1
MAX580003	G3"	38,5	93	1
MAX580004	G4"	45	121	1

MAX 59



Raccordo a "L" 90° femmina-femmina

Elbow 90° female-female

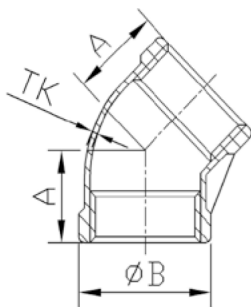
Winkelstück 90°

Equerre femelle 90°

Racor a L hembra 90°

CODICE/CODE	F"	A	B	TK	PEZZI/PIECES
MAX590018	G1/8	17	13,5	2	10
MAX590014	G1/4	19	16	2	10
MAX590038	G3/8	23	20	2	10
MAX590012	G1/2	27	26	1,7	10
MAX590034	G3/4	32	31,5	1,7	10
MAX590001	G1"	38	38,5	1,8	1
MAX590114	G1"1/4	45	47,5	2	1
MAX590112	G1"1/2	48	54	2,2	1
MAX590002	G2"	57	66,5	2,4	1
MAX590212	G2"1/2	69	83,5	2,7	1
MAX590003	G3"	78	97	3,2	1
MAX590004	G4"	96	123,5	3,5	1

MAX 62



Raccordo a "L" 45° femmina-femmina

Elbow 45° female-female

Winkelstück 45°

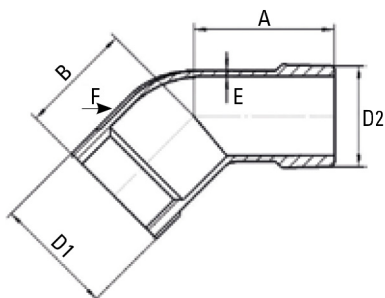
Equerre femelle 45°

Racor a L hembra 45°

CODICE/CODE	F"	A	B	TK	PEZZI/PIECES
MAX620014	G1/4	17	16	2	10
MAX620038	G3/8	19	20	2	10
MAX620012	G1/2	21	26	1,7	10
MAX620034	G3/4	25	31,5	1,7	10
MAX620001	G1"	29	38,5	1,8	10
MAX620114	G1"1/4	33	47,5	2	1
MAX620112	G1"1/2	37	54	2,2	1
MAX620002	G2"	42	66,5	2,4	1

MAX 45K

NEW



Raccordo a "L" 45° maschio-femmina

Elbow 45° male-female

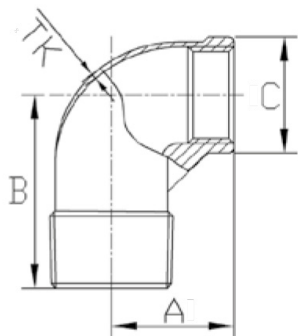
Winkelstück 45°

Equerre mâle-femelle 45°


Racor a L macho - hembra 45°

CODICE/CODE	F"	D1	D2	A	B	E	F	PEZZI/PIECES
MAX45K0038	G3/8	20,8	17,5	23	18	2,4	2,5	10
MAX45K0012	G1/2	27,5	21	29,5	19	2,1	3	10
MAX45K0034	G3/4	32,5	26,5	33	21	2,1	3	10
MAX45K0001	G1"	40,5	33	36	25	2,5	3	1
MAX45K0114	G1"1/4	49,5	41,8	40	33	2,7	3,5	1
MAX45K0112	G1"1/2	56	48	42	39	2,9	3,5	1
MAX45K0002	G2"	68	60	46	40	2,9	4	1

MAX 60K



Raccordo a "L" maschio-femmina

 Elbow male-female

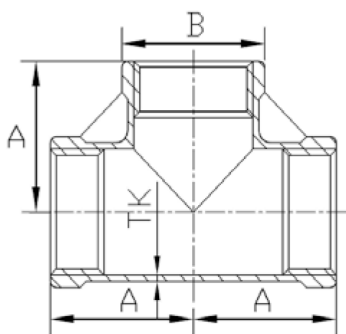
 Winkelstück

 Equerre mâle-femelle

 Racor a L macho - hembra

CODICE/CODE	F"	F1"	A	B	C	TK	PEZZI/PIECES
MAX60K0018	R1/8	G1/8	17	26	13,7	2,8	10
MAX60K0014	R1/4	G1/4	19	27	16,7	2	10
MAX60K0038	R3/8	G3/8	23	29	20,5	2,2	10
MAX60K0012	R1/2	G1/2	27	35	26	2,2	10
MAX60K0034	R3/4	G3/4	32	40	31,5	2,1	10
MAX60K0001	R1"	G1"	38	46	39	2,2	1
MAX60K0114	R1"1/4	G1"1/4	45	54	47,5	2,5	1
MAX60K0112	R1"1/2	G1"1/2	48	57	54	2,6	1
MAX60K0002	R2"	G2"	57	70	66,5	2,6	1
MAX60K0212	R2"1/2	G2"1/2	69	83	83,5	3,3	1
MAX60K0003	R3"	G3"	78	94	97	3	1
MAX60K0004	R4"	G4"	97	115	123,5	4	1

MAX 61




"T" femmina

 "T" female

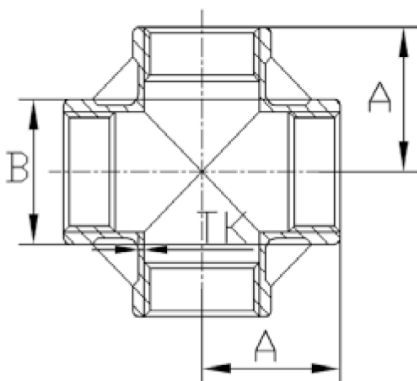
 T-Stück

 Té égal femelle

 Racor a T hembra

CODICE/CODE	F"	A	B	TK	PEZZI/PIECES
MAX610018	G1/8	17	13,5	2	10
MAX610014	G1/4	19	16	2	10
MAX610038	G3/8	23	20	2	10
MAX610012	G1/2	27	26	1,7	10
MAX610034	G3/4	32	31,5	1,7	10
MAX610001	G1"	38	38,5	1,8	1
MAX610114	G1"1/4	45	47,5	2	1
MAX610112	G1"1/2	48	54	2,2	1
MAX610002	G2"	57	66,5	2,4	1
MAX610212	G2"1/2	69	83,5	2,7	1
MAX610003	G3"	78	97	3,2	1
MAX610004	G4"	97	123,5	3,5	1

MAX 64



Croce femmina

 Female cross

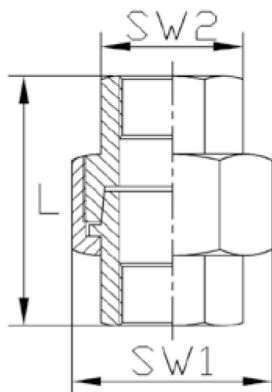
 Kreuzstück

 Croix égale femelle

 Racor a cruz hembra

CODICE/CODE	F"	A	B	TK	PEZZI/PIECES
MAX640014	G1/4	19	16	2	10
MAX640038	G3/8	23	20	2	10
MAX640012	G1/2	27	26	1,7	10
MAX640034	G3/4	32	31,5	1,7	10
MAX640001	G1"	38	38,5	1,8	10
MAX640114	G1"1/4	45	47,5	2	1
MAX640112	G1"1/2	48	54	2,2	1
MAX640002	G2"	57	66,5	2,4	1

MAX 65



Bocchettone 3 pezzi femmina-femmina

3 Parts joint female-female

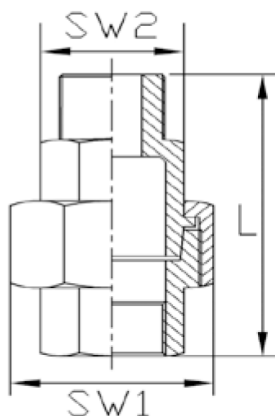
Doppelnippel lösbar Innengewinde

Raccord union 3 pièce femelle-femelle

Empalme unión 3 piezas hembra-hembra

CODICE/CODE	F"	L	SW1	SW2	PEZZI/PIECES
MAX650018	G1/8	30	25	13	10
MAX650014	G1/4	33,5	30,5	17	10
MAX650038	G3/8	36,5	34	20,5	10
MAX650012	G1/2	34,7	34,4	23,8	10
MAX650034	G3/4	37,5	41,2	29,2	10
MAX650001	G1"	43	48,3	36,5	1
MAX650114	G1"1/4	45,5	60,3	46	1
MAX650112	G1"1/2	49	66,5	52	1
MAX650002	G2"	57	79	64	1
MAX650212	G2"1/2	66	96,5	80	1
MAX650003	G3"	74	110	93,5	1
MAX650004	G4"	82,5	141	118,5	1

MAX 66K



Bocchettone 3 pezzi maschio-femmina

3 Parts joint male-female

Doppelnippel lösbar, Innen/Außengewinde

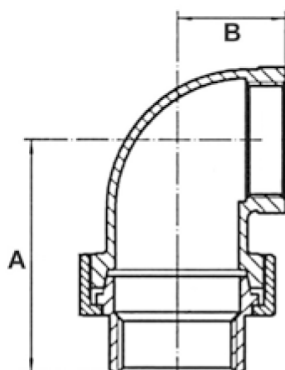
Raccord union 3 pièce mâle-femelle

Empalme unión 3 piezas macho-hembra

CODICE/CODE	F"	F1	L	SW1	SW2	PEZZI/PIECES
MAX66K0014	G1/4	R1/4	44	30,5	17	10
MAX66K0038	G3/8	R3/8	47,5	34	20,5	10
MAX66K0012	G1/2	R1/2	47,5	34,4	23,8	10
MAX66K0034	G3/4	R3/4	51,7	41,2	29,2	10
MAX66K0001	G1"	R1"	60	48,3	36,5	10
MAX66K0114	G1"1/4	R1"1/4	64	60,3	46	1
MAX66K0112	G1"1/2	R1"1/2	67,5	66,5	52	1
MAX66K0002	G2"	R2"	75,5	79	64	1
MAX66K0212	G2"1/2	R2"1/2	84,5	96,5	80	1
MAX66K0003	G3"	R3"	96	110	93,5	1
MAX66K0004	G4"	R4"	107,5	141	118,5	1

MAX 16F

NEW



Bocchettone curvo 3 pezzi femmina-femmina

3 Parts curved joint female-female

Doppelt gebogener, abnehmbarer Nippel Innengewinde

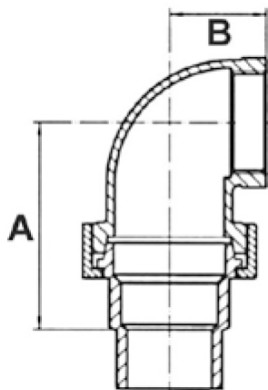
Raccord union courbé 3 pièce femelle-femelle

Empalme unión curva 3 piezas hembra-hembra

CODICE/CODE	F"	F1"	A	B	PEZZI/PIECES
MAX16F0012	G1/2	G1/2	46	24,5	10
MAX16F0034	G3/4	G3/4	53	30	10
MAX16F0001	G1"	G1"	56	33	1
MAX16F0114	G1"1/4	G1"1/4	67	39,5	1
MAX16F0112	G1"1/2	G1"1/2	70	43	1
MAX16F0002	G2"	G2"	85	53,5	1

MAX 16

NEW



Bocchettone curvo 3 pezzi maschio-femmina

3 Parts curved joint male-female

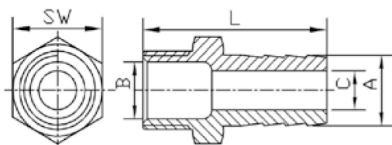
Doppelt gebogener, abnehmbarer Nippel mit Innen/Außengewinde

Raccord union courbé 3 pièce mâle-femelle

Empalme unión curva 3 piezas macho-hembra

CODICE/CODE	F"	F1"	A	B	PEZZI/PIECES
MAX160012	G1/2	G1/2	46	24,5	10
MAX160034	G3/4	G3/4	53	30	10
MAX160001	G1"	G1"	56	33	1
MAX160114	G1"1/4	G1"1/4	67	39,5	1
MAX160112	G1"1/2	G1"1/2	70	43	1
MAX160002	G2"	G2"	85	53,5	1

MAX 69K



Portagomma maschio conico

Taper hose male adapter

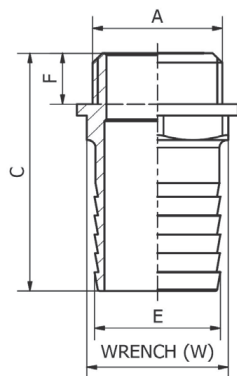
Schlauchtülle konisches Gewinde

Douille annelée, conique

Espiga macho cónica

CODICE/CODE	F"	A	L	B	C	SW	PEZZI/PIECES
MAX69K1806	R1/8	6	38	5,5	4,5	11	10
MAX69K1408	R1/4	8	42,5	8,2	5,5	14	10
MAX69K3810	R3/8	11	49	11,5	7,5	18	10
MAX69K1215	R1/2	15	57,5	15,5	10,5	22,5	10
MAX69K3420	R3/4	20	66	20,5	15,5	28,5	10
MAX69K0125	R1"	25	76	26	22	35	1
MAX69K4133	R1"1/4	33	79	35,5	27,5	44	1
MAX69K4021	R1"1/2	39	82	40,5	33	49,5	1
MAX69K0250	R2"	50	92	51,5	46	62	1
MAX69K2265	R2"1/2	65	99	66	56,5	77,5	1
MAX69K0377	R3"	77	105	78	68	90,5	1
MAX69K0410	R4"	100	115	102,5	91,5	116	1

MAX 69



Portagomma maschio cilindrico BSPP

Hose male adapter parallel BSPP

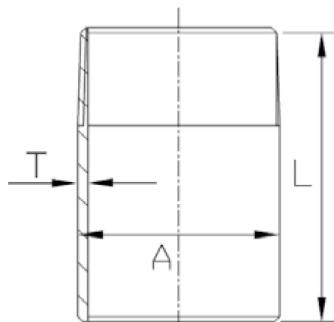
Schlauchtülle zylindrisches Gewinde

Douille annelée, cylindrique BSPP

Espiga macho, cilíndrica BSPP

CODICE/CODE	A	E	F	W	C	PEZZI/PIECES
MAX691410	G1/4	10	12	15	48,5	10
MAX693812	G3/8	12	8,5	19	38	10
MAX691214	G1/2	14	9,5	18	44,5	10
MAX691216	G1/2	16	9,5	18	44,5	10
MAX691218	G1/2	18	9,5	20	47,5	10
MAX691220	G1/2	20	9,5	22	50	10
MAX693420	G3/4	20	10	23	53	10
MAX693425	G3/4	25	10	27	56	10
MAX690120	G1"	20	13	28	55	1
MAX690125	G1"	25	13	28	58	1
MAX690130	G1"	30	13	32	60	1
MAX694130	G1"1/4	30	15,5	38	69	1
MAX694135	G1"1/4	35	15,5	38	70	1
MAX694140	G1"1/4	40	15,5	42	70	1
MAX692140	G1"1/2	40	15,5	44	76	1
MAX690250	G2"	50	14	52	73	1

MAX 55K



Tronchetto a saldare INOX AISI 316

AISI 316 weldable joint

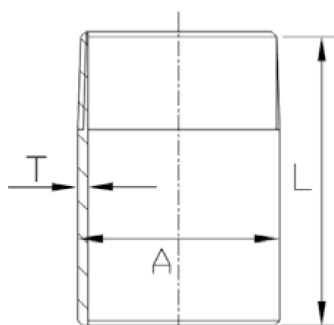
Schweißstück Edelstahl AISI 316

Joints a souder INOX AISI 316

Uniones de soldadura INOX AISI 316

CODICE/CODE	F"	A	L	T	PEZZI/PIECES
MAX55K0018	R1/8	10,2	30	2	10
MAX55K0014	R1/4	13,72	30	2,24	10
MAX55K0038	R3/8	17,15	30	2,31	10
MAX55K0012	R1/2	21,34	35	2,77	10
MAX55K0034	R3/4	26,67	40	2,87	10
MAX55K0001	R1"	33,4	40	3,38	1
MAX55K0114	R1"1/4	42,16	50	3,56	1
MAX55K0112	R1"1/2	48,26	50	3,68	1
MAX55K0002	R2"	60,33	50	3,91	1
MAX55K0212	R2"1/2	76,1	60	5,16	1
MAX55K0003	R3"	88,9	70	5,49	1
MAX55K0004	R4"	114,3	80	6,02	1

MAX 55K-304



Tronchetto a saldare INOX AISI 304

AISI 304 weldable joint

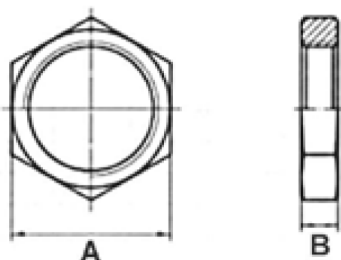
Schweißstück Edelstahl AISI 304

Joints a souder INOX AISI 304

Uniones de soldadura INOX AISI 304

CODICE/CODE	F"	A	L	T	PEZZI/PIECES
MAX55K0018304	R1/8	10,2	30	2	10
MAX55K0014304	R1/4	13,72	30	2,24	10
MAX55K0038304	R3/8	17,15	30	2,31	10
MAX55K0012304	R1/2	21,34	35	2,77	10
MAX55K0034304	R3/4	26,67	40	2,87	10
MAX55K0001304	R1"	33,4	40	3,38	1
MAX55K0114304	R1"1/4	42,16	50	3,56	1
MAX55K0112304	R1"1/2	48,26	50	3,68	1
MAX55K0002304	R2"	60,33	50	3,91	1
MAX55K0212304	R2"1/2	76,1	60	5,16	1
MAX55K0003304	R3"	88,9	70	5,49	1
MAX55K0004304	R4"	114,3	80	6,02	1

MAX 70



Controdado INOX AISI 316

Locknut AISI 316

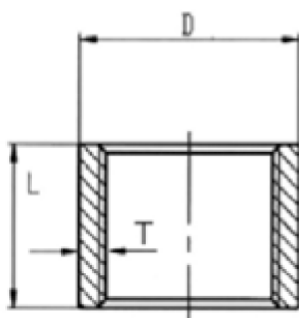
Gegenmutter AISI 316

Contre-écrou INOX AISI 316

Contratuercas INOX AISI 316

CODICE/CODE	F"	A	B	PEZZI/PIECES
MAX700018	G1/8	17	7	10
MAX700014	G1/4	19	6	10
MAX700038	G3/8	24	7,5	10
MAX700012	G1/2	27	8	10
MAX700034	G3/4	30	10	10
MAX700001	G1"	39	9	1
MAX700114	G1"1/4	48	11	1
MAX700112	G1"1/2	55	11	1
MAX700002	G2"	65,5	14	1
MAX700212	G2"1/2	82	17	1
MAX700003	G3"	95,5	20	1
MAX700004	G4"	121,5	23	1

MAX 74



Manicotto a saldare corto femmina-femmina INOX AISI 316

AISI 316 half coupling female-female to be welded

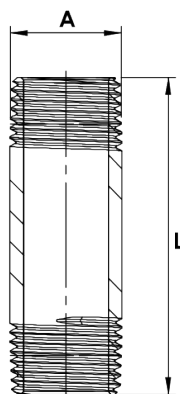
Schweiß Verschraubungen AISI 316

Manchon a souder court femelle-femelle

Manguito de soldadura corto hembra-hembra

CODICE/CODE	F"	D	L	T	PEZZI/PIECES
MAX740018	G1/8	14	11,5	2,7	10
MAX740014	G1/4	18	13,5	3,2	10
MAX740038	G3/8	21	14,5	2,95	10
MAX740012	G1/2	26	18,5	3,6	10
MAX740034	G3/4	32	20	3,85	10
MAX740001	G1"	38	22	3,8	1
MAX740114	G1"1/4	48,5	25	4,7	1
MAX740112	G1"1/2	55	27	5	1
MAX740002	G2"	67	31	5,05	1

MAX 77



Barilotto a saldare corto maschio-maschio INOX AISI 316

AISI 316 half coupling male-male to be welded

Schweiß Verschraubungen AISI 316

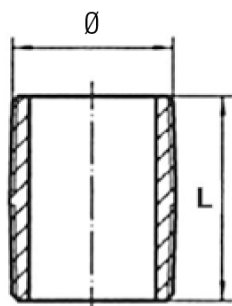
Manchon a souder court mâle-mâle

Manguito de soldadura corto macho-macho

CODICE/CODE	F"	A	L	PEZZI/PIECES
MAX770014	R1/4	13,72	40	10
MAX770038	R3/8	17,15	40	10
MAX770012	R1/2	21,34	60	10
MAX770034	R3/4	26,67	60	10
MAX770001	R1"	33,4	60	1
MAX770114	R1"1/4	42,16	80	1
MAX770112	R1"1/2	48,26	80	1
MAX770002	R2"	60,33	100	1

MAX 78

NEW



Tuttavite

All-screw

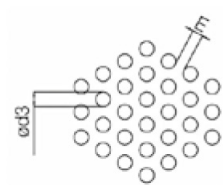
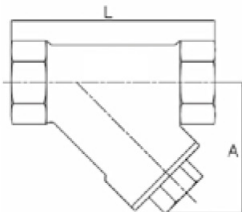
Alle Schrauben

Toutes les vis

Todos los tornillos

CODICE/CODE	Ø	L	PEZZI/PIECES
MAX780014	G1/4	18	10
MAX780038	G3/8	22	10
MAX780012	G1/2	25	10
MAX780034	G3/4	30	10
MAX780001	G1"	35	1
MAX780114	G1"1/4	38	1
MAX780112	G1"1/2	38	1
MAX780002	G2"	45	1
MAX780003	G3"	60	1

MAX 90



 **Filtro a Y INOX AISI 316**

 Y Filter AISI 316

 Y Filter AISI 316

 Filtre en Y INOX AISI 316

 Filtro Y INOX AISI 316

CODICE/CODE	F"	DN	A	L	Ød3	E	PEZZI/PIECES
MAX900014	G1/4	8	30	65	1	1	10
MAX900038	G3/8	10	30	65	1	1	10
MAX900012	G1/2	15	40	65	1	1	10
MAX900034	G3/4	20	45	80	1	1	10
MAX900001	G1"	25	55	90	1	1	1
MAX900041	G1"1/4	32	65	105	1	1	1
MAX900021	G1"1/2	40	70	120	1	1	1
MAX900002	G2"	50	85	140	1	1	1

Grado di filtrazione : 200~300 µm

Filtration Degree : 200~300 µm