












-  **Giunti universali in ottone**
-  Brass universal couplings
-  Universal Kupplungen Messing
-  Raccords à coiffe universel laiton
-  Enchufe universal en latón

**GT10****GT20****GT30****GT40****GT50** **Dati tecnici di giunti universali in ottone**

-  Brass universal couplings technical data
-  Technischen Daten der Universal Kupplungen Messing
-  Données techniques des raccords à coiffe universel laiton
-  Datos técnicos de los enchufe universal en latón

 **Caratteristiche principali**

1. Gamma completa 1/8 - 1/2"
2. Filettatura BSPP cilindrica UNI-ISO228, BSPT conica UNI-ISO 7
3. Vasta gamma
4. Robustezza meccanica

 **Principales caractéristiques**

1. Gamme complète 1/8 - 1/2"
2. Filetage cylindrique BSPP UNI-ISO 228, conique BSPT UNI-ISO 7
3. Large gamme
4. Résistance mécanique

 **Main features**

1. Complete Range 1/8 - 1/2"
2. BSPP cylindrical thread UNI-ISO 228, conical BSPT UNI-ISO 7
3. Wide range
4. Mechanical Resistance

 **Características principales**

1. Gama completa 1/8-1/2"
2. BSPP rosca cilíndrica UNI-ISO 228, cónica BSPT UNI-ISO 7
3. Amplia gama
4. Robustez mecánica

 **Hauptmerkmale**

1. Vollständiges Sortiment 1/8 - 1/2"
2. BSPP-zylindrisches Gewinde UNI-ISO 228, konisch BSPT UNI-ISO 7
3. Große Auswahl
4. Mechanische Festigkeit

 **Applicazioni**

1. Aria Compressa
2. Impianti per automazione pneumatica
3. Gas inerti
4. Vuoto

 **Applications**

1. Air comprimé
2. Installations pour l'automatisation pneumatique
3. Gaz neutres
4. Vide

 **Applications**

1. Compressed Air
2. Systems for pneumatic automation
3. Inert Gases
4. Vacuum

 **Aplicaciones**

1. Aire comprimido
2. Instalaciones para automación neumática
3. Gases inertes
4. Vacío

 **Anwendungen**

1. Druckluft
2. Systeme für die pneumatische Automatisierung
3. Inertgase
4. Leer

 **Fluido**

Aria compressa

 **Fluid**

Compressed air

 **Fluid**

Druckluft

 **Fluide**

Air comprimé

 **Fluido**

Aire comprimido

 **Filettatura**

BSPP cilindrica UNI-ISO228

 **Thread types**

BSPP parallel UNI-ISO228

 **Gewinde**

BSPP zylindrisch UNI-ISO228

 **Filetage**

BSPP cylindrique UNI-ISO228

 **Roscado**

BSPP cilíndrico UNI-ISO 228

 **Filetti**

Filettature da 1/8 a 1/2"

 **Threads**

Threads from 1/8 to 1/2"

 **Gewinde**

Gewinde von 1/8 bis 1/2"

 **Filets**

Filetages de 1/8 à 1/2"

 **Roscas**

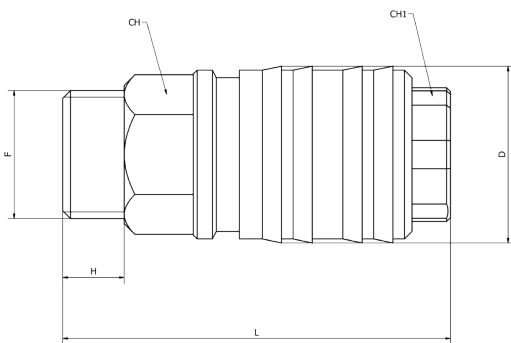
Roscas de 1/8 a 1/2"

 <b>Pressione e temperatura</b>	 <b>Pressure and Temperature</b>	 <b>Druck und Temperatur</b>	 <b>Pression et Température</b>	 <b>Presión y Temperatura</b>
Pressione: 0 - 16 Bar	Pressure: 0 - 16 Bar	Druck: 0 - 16 Bar	Pression: 0 - 16 bar	Presión: 0 - 16 Bar
Temperatura: -15°C / +80°C	Temperature: +5°F / +176°F	Temperatur: -15°C / +80°C	Température: -15°C / +80°C	Temperatura: -15°C / +80°C

<b>Portata</b>	<b>Flow</b>	<b>Mengenstrom</b>	<b>Débit</b>	<b>Caudal</b>
Portata: 2000 l/min. a 6 Bar	Flow: 2000 l/min. at 6 Bar	Mengenstrom: 2000 l/min. am 6 Bar	Débit: 2000 l/min. à 6 Bar	Caudal: 2000 l/min. para 6 Bar

<b>Materiali</b>	<b>Materials</b>	<b>Werkstoffen</b>	<b>Matériels</b>	<b>Materiales</b>
<b>Corpo:</b> Ottone	<b>Body:</b> Brass	<b>Körper:</b> Messing	<b>Corps:</b> Laiton	<b>Cuerpo:</b> Latón
<b>Valvola:</b> Ottone	<b>Valve:</b> Brass	<b>Ventil:</b> Messing	<b>Vanne:</b> Laiton	<b>Válvula:</b> Latón
<b>Ghiera:</b> Ottone	<b>Ad justing collar:</b> Brass	<b>Zwinge:</b> Messing	<b>Virole:</b> Laiton	<b>Contera:</b> Latón
<b>Attacco:</b> Ottone	<b>Joint:</b> Brass	<b>Kupplung:</b> Messing	<b>Attelage:</b> Laiton	<b>Enganche:</b> Latón
<b>Sfera:</b> Acciaio INOX	<b>Balls:</b> Stainless Steel	<b>Kugeln:</b> Rostfreier Stahl	<b>Sphères:</b> Acier Inoxydable	<b>Esferas:</b> Acero Inoxidable
<b>Molle:</b> Acciaio INOX	<b>Springs:</b> Stainless Steel	<b>Feder:</b> Rostfreier Stahl	<b>Ressort:</b> Acier Inoxydable	<b>Muelle:</b> Acero Inoxidable
<b>O-Ring:</b> NBR	<b>O-Ring:</b> NBR	<b>O-Ringe:</b> NBR	<b>O-ring:</b> NBR	<b>Junta tórica:</b> NBR

## GT 10

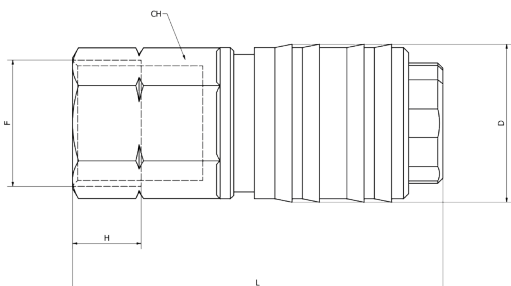


### **Giunto universale maschio**

- Universal male quick coupler
- Universal Kupplungen
- Coupleurs mâle universel
- Enchufe macho universal

CODICE/CODE	F	H	D	L	CH	PEZZI/PIECES
<b>GT100014</b>	G1/4	8	23	53	17	10
<b>GT100038</b>	G3/8	8,5	23	51	18	10
<b>GT100012</b>	G1/2	10	23	51	22	10

## GT 20

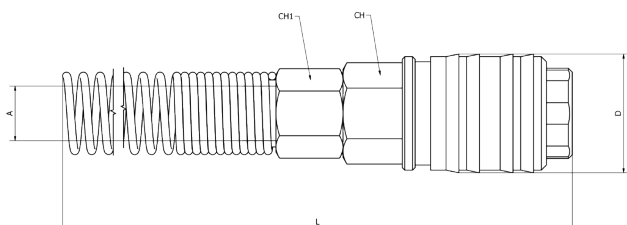


### **Giunto universale femmina**

- Universal female quick coupler
- Universal Kupplungen
- Coupleurs femelle universel
- Enchufe hembra universal

CODICE/CODE	F	H	D	L	CH	PEZZI/PIECES
<b>GT200014</b>	G1/4	11	23	54	17	10
<b>GT200038</b>	G3/8	11	23	54	19	10
<b>GT200012</b>	G1/2	11	23	55	24	10

## GT 30



### Giunto universale con molla

Universal quick coupler with spring

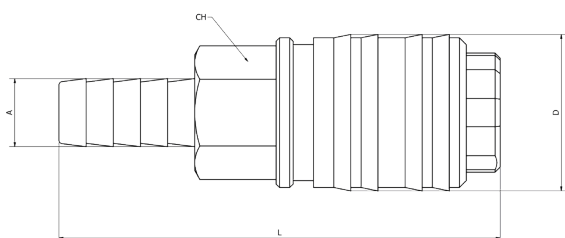
Universal Kupplungen mit Feder

Coupleurs universel avec ressort

Enchufe universal con muelle

CODICE/CODE	A	D	L	CH	CH1	PEZZI/PIECES
<b>GT300406</b>	04x06	23				10
<b>GT305508</b>	5,5x08	23	147,5	17	13	10
<b>GT300608</b>	06x08	23	148,5	17	13	10
<b>GT306510</b>	6,5x10	23	149	17	15	10
<b>GT300810</b>	08x10	23	152	17	15	10
<b>GT301012</b>	10x12	23	142,5	17	15	10

## GT 40



### Giunto universale con resca

Universal quick coupler with tail

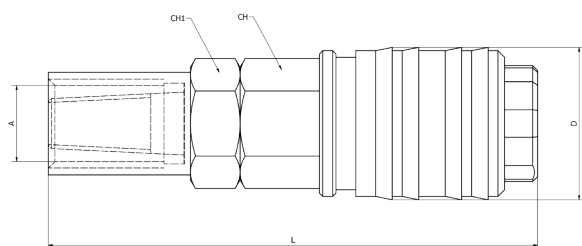
Universal Kupplungen mit Abschluss

Coupleurs universel barbillon

Enchufe universal con espiga

CODICE/CODE	A	D	L	CH	PEZZI/PIECES
<b>GT400006</b>	6	23	59	17	10
<b>GT400008</b>	8	23	65	17	10
<b>GT400010</b>	10	23	65	17	10
<b>GT400012</b>	12			17	10

## GT 50



### Giunto universale portagomma

Universal quick coupler for rubber tube

Schlauchtulle Universal Kupplungen

Coupleurs universel pour tuyau

Enchufe universal para tubo

CODICE/CODE	A	D	L	CH	CH1	PEZZI/PIECES
<b>GT500614</b>	06x14	23	74	17	17	10
<b>GT500812</b>	08x12	23				10
<b>GT500817</b>	08x17	23	75	17	20	10
<b>GT501019</b>	10x19	23	76	17	22	10