

## GPC, GPL mini series

### Ordering code

GPC 6 01 □ - M

① ② ③ ④ ⑤

| ① Model                            | ② Port size  | ③ Thread connection |                            | ④ Standard color |                       | ⑤ Style type |
|------------------------------------|--|---------------------|----------------------------|------------------|-----------------------|--------------|
| GPC: Male connector (G thread)<br> | 3.2: $\Phi 3.2\text{mm}$<br>4: $\Phi 4\text{mm}$<br>6: $\Phi 6\text{mm}$ | Thread connection   | Adaptable port size        | Standard color   | Specification         | M: Mini type |
| GPL: Male elbow (G thread)<br>     |  | M3: M3X0.5          | $\Phi 3.2, \Phi 4$         | Blank: Gray      | Release button: Gray  |              |
|                                    |  | M5: M5X0.8          | $\Phi 3.2, \Phi 4, \Phi 6$ |                  | Release button: Black |              |
|                                    | 01: G1/8   | $\Phi 4, \Phi 6$    | D: Black                   |                  |                       |              |
|                                    |  | 02: G1/4            | $\Phi 4$                   |                  |                       |              |

### Specification

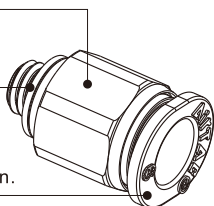
|                                    |   |
|------------------------------------|---|
| <b>Operating pressure range</b>    | <b>0~10kgf/cm<sup>2</sup>(0~1.0MPa)</b> |
| Negative pressure                  | -750mmHg(10Torr)                        |
| Proof pressure                     | 1.5MPa                                  |
| Ambient and fluid temperature (°C) | -20~70                                  |
| Applicable tubing                  | Soft nylon or polyurethane              |
| Color                              | Gray/black                              |

### Table for interface port and tube O.D.

| Product series | Thread type | Port size  |          |          |
|----------------|-------------|------------|----------|----------|
|                |             | $\Phi 3.2$ | $\Phi 4$ | $\Phi 6$ |
| GPC<br>GPL     | M3          | ●          | ●        |          |
|                | M5          | ●          | ●        | ●        |
|                | G1/8        |            | ●        | ●        |
|                | G1/4        |            | ●        |          |

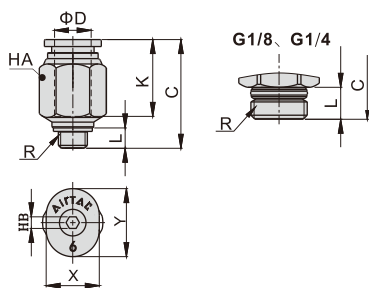
### Product feature

- The compact appearance space saving.
- The threaded portion is attached with a sealing gasket to prevent air leakage over the connection thread portion.
- Gray and black are optional for the release button.

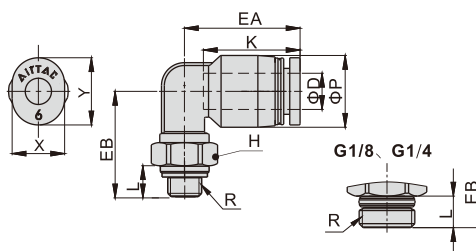


### Dimensions

#### GPC Series



#### GPL Series



| Model\Item | ΦD   | R      | L    | C    | K    | X   | Y    | HA | HB  | Weight(g) | PCS/bag |
|------------|------|--------|------|------|------|-----|------|----|-----|-----------|---------|
| GPC3.2M3-M | 3.2  | M3×0.5 | 3    | 16   | 11.5 | 6.8 | 8.7  | 7  | 1.5 | 1.7       | 10      |
| GPC3.2M5-M |      | M5×0.8 | 3.5  | 16   | 11.5 | 6.8 | 8.7  | 7  | 2   | 2.0       | 10      |
| GPC4M3-M   | 4    | M3×0.5 | 3    | 17.5 | 12.5 | 7.8 | 9.5  | 8  | 1.5 | 2.4       | 10      |
| GPC4M5-M   |      | M5×0.8 | 3.5  | 17   | 12.5 | 7.8 | 9.5  | 8  | 2   | 2.7       | 10      |
| GPC401-M   |      | G1/8   | 5.5  | 16   | 13.5 | 7.8 | 9.5  | 10 | 3   | 3.6       | 10      |
| GPC402-M   | G1/4 | 6.5    | 16.5 | 13.5 | 7.8  | 9.5 | 14   | 3  | 9.5 | 10        |         |
| GPC6M5-M   | 6    | M5X0.8 | 3.5  | 18.5 | 13.5 | 9.8 | 11.7 | 10 | 2   | 3.6       | 10      |
| GPC601-M   |      | G1/8   | 5.5  | 18.5 | 15.5 | 9.8 | 11.7 | 11 | 4   | 6.0       | 10      |

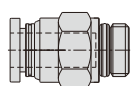
| Model\Item | ΦD   | R      | ΦP   | L    | K    | EA   | EB   | H    | X   | Y    | Weight(g) | PCS/bag |
|------------|------|--------|------|------|------|------|------|------|-----|------|-----------|---------|
| GPL3.2M3-M | 3.2  | M3×0.5 | 7.5  | 3    | 12   | 14.5 | 14   | 7    | 6.8 | 8.7  | 2.4       | 10      |
| GPL3.2M5-M |      | M5×0.8 |      | 3.5  | 12   |      | 14.5 | 7    | 6.8 | 8.7  | 2.7       | 10      |
| GPL4M3-M   | 4    | M3×0.5 | 8.5  | 3    | 12.5 | 15   | 14   | 7    | 7.8 | 9.5  | 3.0       | 10      |
| GPL4M5-M   |      | M5×0.8 |      | 3.5  | 12.5 |      | 14.5 | 7    | 7.8 | 9.5  | 3.3       | 10      |
| GPL401-M   |      | G1/8   |      | 5.5  | 12.5 |      | 14   | 10   | 7.8 | 9.5  | 6.2       | 10      |
| GPL402-M   | G1/4 | 6.5    | 12.5 | 16.5 | 14   | 7.8  | 9.5  | 14.1 | 10  |      |           |         |
| GPL6M5-M   | 6    | M5X0.8 | 10.5 | 3.5  | 13.5 | 16.0 | 15.5 | 7    | 9.8 | 11.7 | 4.0       | 10      |
| GPL601-M   |      | G1/8   |      | 5.5  | 13.5 |      | 14.5 | 10   | 9.8 | 11.7 | 6.8       | 10      |

## GPC series

### Ordering code

GPC 6 01 □

① ② ③ ④

| ① Model  | ② Port size                                  | ③ Thread connection   |                           | ④ Standard color |   |  |
|--|--|---|---------------------------|------------------|---|--|
| GPC: Male connector<br>(G thread)<br> | 6: Φ6mm<br>8: Φ8mm<br>10: Φ10mm<br>12: Φ12mm | Thread connection<br>M5: M5X0.8<br>01: G1/8<br>02: G1/4<br>03: G3/8<br>04: G1/2 | Adaptable port size<br>Φ6 | Φ6, Φ8, Φ10, Φ12 | Standard color<br>Blank: Gray<br>D: Black | Specification<br>Release button: Gray<br>Release button: Black |

### Specification

|                                    |   |
|------------------------------------|---|
| <b>Operating pressure range</b>    | <b>0~10kgf/cm<sup>2</sup>(0~1.0MPa)</b> |
| Negative pressure                  | -750mmHg(10Torr)                        |
| Proof pressure                     | 1.5MPa                                  |
| Ambient and fluid temperature (°C) | -20~70                                  |
| Applicable tubing                  | Soft nylon or polyurethane              |
| Color                              | Gray/black                              |

### Table for interface port and tube O.D.

| Product series | Thread type | Port size |    |     |     |
|----------------|-------------|-----------|----|-----|-----|
|                |             | Φ6        | Φ8 | Φ10 | Φ12 |
| GPC            | M5          | ●         |    |     |     |
|                | G1/8        | ●         | ●  | ●   | ●   |
|                | G1/4        | ●         | ●  | ●   | ●   |
|                | G3/8        | ●         | ●  | ●   | ●   |
|                | G1/2        | ●         | ●  | ●   | ●   |

### Product feature

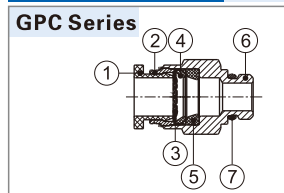
1. The compact appearance space saving.

2. Gray and black are optional for the release button.

3. The threaded portion is attached with a sealing gasket to prevent air leakage over the connection thread portion.



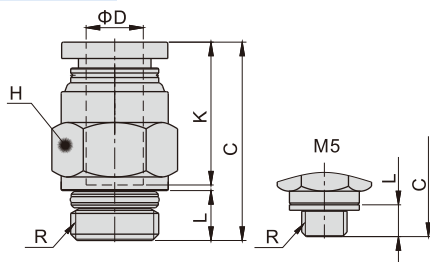
### Inner structure



| No. | Item           | Material        |
|-----|----------------|-----------------|
| 1   | Release button | POM             |
| 2   | Guide          | Aluminum alloy  |
| 3   | Spring gasket  | Stainless steel |
| 4   | Chuck          | POM             |
| 5   | O-ring         | NBR             |
| 6   | Body           | Brass           |
| 7   | O-ring         | NBR             |

### Dimensions

#### GPC Series



| Model/Item | ΦD | R      | L   | C    | K     | H(Across flat) | Weight(g) | PCS/bag |
|------------|----|--------|-----|------|-------|----------------|-----------|---------|
| GPC6M5     | 6  | M5×0.8 | 3.5 | 22.5 | 16.5  | 12             | 8.5       | 10      |
| GPC601     |    | G1/8   | 5.5 | 22   | 16.35 | 12             | 7.1       | 10      |
| GPC602     |    | G1/4   | 6.5 | 21   | 16.35 | 14             | 11.5      | 10      |
| GPC603     |    | G3/8   | 7   | 20.5 | 16.35 | 19             | 23.2      | 10      |
| GPC604     |    | G1/2   | 8.5 | 20.5 | 16.35 | 22             | 37.9      | 10      |
| GPC801     | 8  | G1/8   | 5.5 | 26   | 18.5  | 14             | 10.7      | 10      |
| GPC802     |    | G1/4   | 6.5 | 25   | 18.5  | 14             | 10.5      | 10      |
| GPC803     |    | G3/8   | 7   | 22   | 18.5  | 19             | 21.5      | 10      |
| GPC804     |    | G1/2   | 8.5 | 23.5 | 18.5  | 22             | 36.2      | 10      |
| GPC1001    | 10 | G1/8   | 5.5 | 29.5 | 20.9  | 17             | 13.2      | 10      |
| GPC1002    |    | G1/4   | 6.5 | 29   | 20.9  | 17             | 15.8      | 10      |
| GPC1003    |    | G3/8   | 7   | 25   | 20.9  | 19             | 18.2      | 10      |
| GPC1004    |    | G1/2   | 8.5 | 23.5 | 20.9  | 22             | 30.7      | 10      |
| GPC1201    | 12 | G1/8   | 5.5 | 32   | 22.7  | 21             | 22.3      | 10      |
| GPC1202    |    | G1/4   | 6.5 | 33   | 22.7  | 21             | 25.4      | 10      |
| GPC1203    |    | G3/8   | 7   | 30.5 | 22.7  | 21             | 23.6      | 10      |
| GPC1204    |    | G1/2   | 8.5 | 27.5 | 22.7  | 22             | 31.7      | 10      |