

# Pen size cylinder

## PB Series—Accessories

### List for ordering code of accessories

Accessories Bore size	Mounting accessories			Knuckle				Sensor switch	
	LB	FA	CJ	I	Y	F	U	CMSG	DMSG(S)
4	-	-	-	-	-	-	-	-	-
6	F-PB6LB	F-PB6FA	-	F-PB6I	F-PB6Y	F-M3X040F	-	CMSG	DMSG(S)
10	F-PB10LB	F-PB10FA	F-PB10CJ	F-PB10I	F-PB10Y	F-M4X070F	F-M4X070U		
12	F-PB12LB	F-PB12FA	F-PB12CJ	F-PB12I	F-PB12Y	F-M5X080F	F-M5X080U		
16			F-PB16CJ						

### Accessory selection

Accessories Cylinder model	Mounting accessories			Knuckle				Sensor switch	
	LB	FA	CJ	I	Y	U [1]	F	CMSG	DMSG(S)
PB	Standard	●	●	●	●	●	●	×	×
	With magnet	●	●	●	●	●	●	●	●
PSB	Standard	●	●	●	●	●	●	×	×
PTB	With magnet	●	●	●	●	●	●	●	●
PBD	Standard	●	●	×	●	●	●	×	×
PBJ	With magnet	●	●	×	●	●	●	●	●

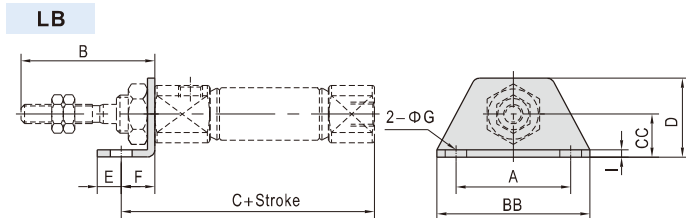
### Material of accessories

Accessories Bore size	Mounting accessories			Knuckle			
	LB	FA	CJ	I	Y	F	U
4~16	△	△	△	□	□	□	□

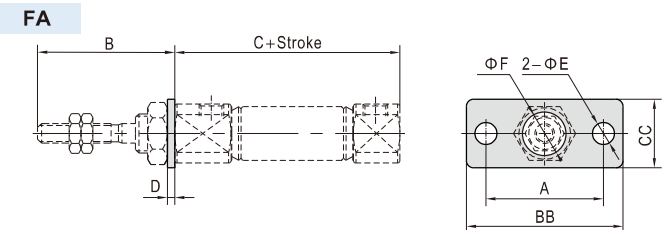
△—SPCC; □—Carbon steel;

[Note 1] Please refer to P447~450 for knuckle detail.

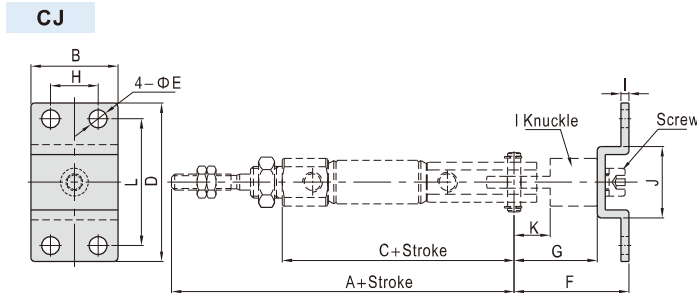
### Dimensions



Bore size\Item	A	B	BB	C	CC	D	E	F	G	I
6	24	28	32	56.5	9	16.5	5	7	4.5	1.5
10	24	28	32	53	9	16.5	5	7	4.5	2
12	33	28	42	55	14	25	6	9	5.5	2.5
16	33	28	42	57	14	25	6	9	5.5	2.5

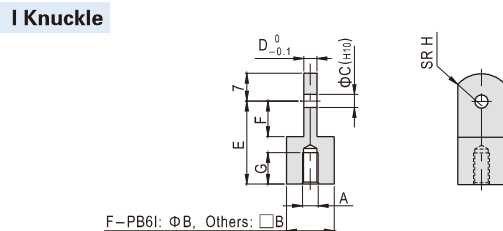


Bore size\Item	A	B	BB	C	CC	D	E	F
6	24	28	32	49.5	14	1.5	4.5	6.3
10	24	28	32	46	14	2	4.5	8.3
12	33	28	42	46	20	3	5.5	10.3
16	33	28	42	48	20	3	5.5	10.3



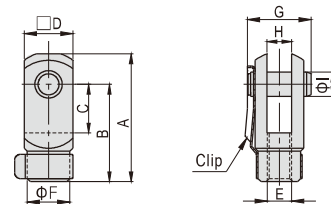
Bore size\Item	A	B	C	D	E	F	G	H	I	J	K	L
10	82	22	54	40	4.5	29	21	12	2	18	9.1	32
12	84	28	56	48	5.5	35	25	16	2.5	20.4	14.1	38
16	86	28	58	48	5.5	35	25	16	2.5	20.4	14.1	38

[Note] CJ type accessories includes I knuckle and PIN. It need to be matched with I knuckle and with relevant PIN.



Bore size\Item	A	B	C	D	E	F	G	H
F-PB6I	M3×0.5	6	3	3	12	5	5	5
F-PB10I	M4×0.7	12	3.3	3	21	9.1	7.5	8
F-PB12I	M5×0.8	12	5	6.3	25	14.1	7.5	12

### Y Knuckle



Bore size\Item	A	B	C	D	E	F	G	H	I
F-PB6Y	15.5	12	5	6	M3×0.5	6	9	3	3
F-PB10Y	28	21	10.2	12	M4×0.7	10	15.5	3.2	3.3
F-PB12Y	28	21	10.2	12	M5×0.8	10	15.5	6.5	5