

# Preparation unit—Accessories

## GS、GF、GU、GP、GV Series pressure gauge



### Symbol



### Product feature

1. It has sensitive reaction and can work under low pressure.
2. The displayed words in the dial are clear and there are several pressure units to be selected.
3. There are several installation ways and installing accessories to be selected.
4. Various dimensions of screw thread are available.

### Specification

Model	GS-40, GF-40, GU-40	GS-50, GF-50, GU-50	GF-60, GU-60
Fluid	Air		
Port size	1/8"	1/4"	1/4"
Temperature range	-20~70°C		
Accuracy grade	2.5		
The pressure range of units and instructions	M	0~1.0MPa(Standard type); 0~0.4MPa(Lower pressure type)	
	B	0~10 bar (Standard type); 0~4 bar (Lower pressure type)	
	P	0~140psi(Standard type); 0~60psi(Lower pressure type)	
	Z	0~10kgf/cm <sup>2</sup> and 0~140psi(Dual-scale display, Standard type) 0~4kgf/cm <sup>2</sup> and 0~60psi(Dual-scale display, Lower pressure type)	
Material of major parts	Shell: SPCC ; Core: Brass		

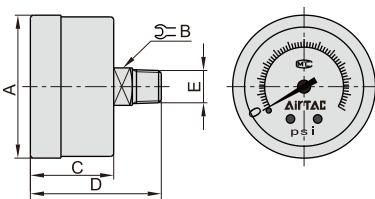
Model	GP-30	GP-40	GV-40
Fluid	Air		
Port size	1/8"	1/8"	1/8"
Temperature range	-20~70°C		
Accuracy grade	2.5		
The pressure range of units and instructions	P	0~1.0MPa&0~140psi(Standard type) 0~0.4MPa&0~60psi(Middle pressure type) 0~0.2MPa&0~30psi(Lower pressure type)	-100~0kPa & -14~0psi
	G	0~1.0MPa&0~10bar(Standard type) 0~0.4MPa&0~4bar(Middle pressure type) 0~0.2MPa&0~2bar(Lower pressure type)	-100~0kPa & -14~0psi
	T	0~10bar&0~140psi(Standard type) 0~4bar&0~60psi(Middle pressure type) 0~2bar&0~30psi(Lower pressure type)	-100~0kPa & -14~0psi
Material of major parts	Shell: Stainless steel ; Core: Brass		

### Ordering code

F-G S 40 10 M						F-G P 40 10 P					
① Accessories code	② Model	③ Mount Type Code	④ Dial diameter	⑤ Max. pressure scale	⑥ Scale and thread type	① Accessories code	② Model	③ Mount Type Code	④ Dial diameter	⑤ Max. pressure scale	⑥ Scale and thread type
F: Accessories	G: Pressure gauge	S: Standard Mount F: Flange Mount U: Pannel Mount	30: OD 30 40: OD 40 50: OD 50 60: OD 60	04: 0.4MPa 10: 1.0MPa	M: MPa(PT) P: psi(NPT) B: bar(G) Z: kgf/cm <sup>2</sup> & psi(PT)	F: Accessories	G: Pressure gauge	P: Stainless steel shell V: Vacuum type	30: OD 30 40: OD 40 40: OD 40	02: 0.2MPa 04: 0.4MPa 10: 1.0MPa 10: -100kPa	G: MPa&bar(G) P: MPa&psi(PT) T: bar&psi(NPT) G: kPa&psi(G) P: kPa&psi(PT) T: kPa&psi(NPT)

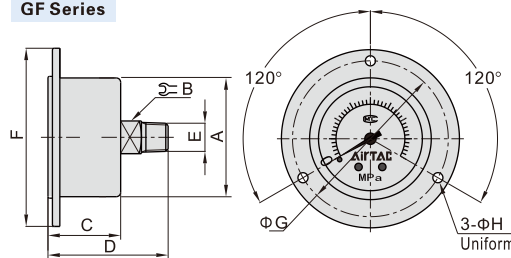
### Dimensions

#### GS Series



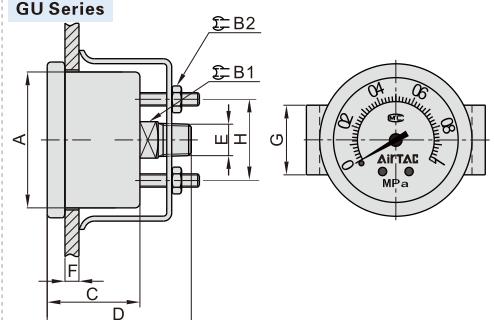
Model	A	B	C	D	E
GS-30	33	11	21	31	1/16"
GS-40	42	11	24.5	37.5	1/8"
GS-50	52	14	26.5	44.5	1/4"

#### GF Series



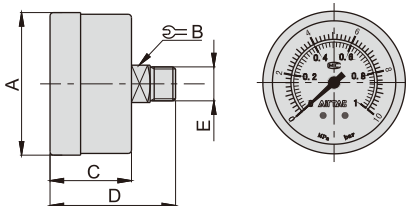
Model	A	B	C	D	E	F	G	H
GF-40	42	11	21	37	1/8"	60	52.5	3.4
GF-50	52	14	26	47	1/4"	71	62	4.4
GF-60	62	14	25	46	1/4"	82	71.5	4.4

#### GU Series



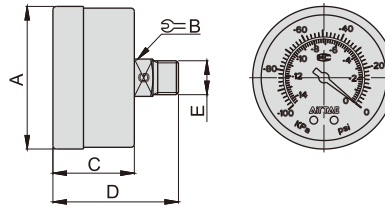
Model	A	B	B1	C	D	E	F(max)	G	H
GU-40	42	11	7	28	44	1/8"	5	21	24.5
GU-50	52	14	8	30.5	50	1/4"	7	24	35
GU-60	62	14	8	30.5	50	1/4"	7	25	35

#### GP Series



Model	GP-30	GP-40
A	30	42
B	11	11
C	17.5	24
D	30.5	37
E	1/8"	1/8"

#### GV Series



Model	GV-40
A	42
B	11
C	24
D	37
E	1/8"