

# Preparation unit—Accessories

## DPC Series minitype no display pressure switch



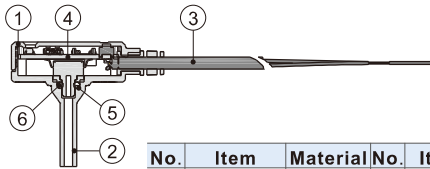
### Symbol



### Product feature

1. Larger measurement range. Easy to install.
2. Two lines type or three lines type (NPN/PNP output mode) to be chosen.
3. Single button to finish learning setting. Normally close and normally open can be exchanged.
4. Two kinds of setting mode (Simple mode and middle value mode) to be chosen.

### Inner structure



No.	Item	Material	No.	Item	Material
1	Up cover	PC	4	PCBA	
2	Basic seat	PC+ABS	5	Gasket	POM
3	Wire Line	PVC	6	O-ring	NBR

### Specification

	DPC	DPCN	DPCP
Voltage	DC24V±10%	DC12~24V±10%	
Pressure range	DPC□10□ -100kPa~1000kPa; DPC□01□ -100kPa~100kPa		
Applied fluid	Air□ Non-corrosive gas□ Incombustibility gas		
Repetitive accuracy	±0.7%F.S		
Temperature accuracy	±2.5%F.S		
Hysteresis	<2%F.S		
Operating Temp. range	0~60°C		
Output style	5~40mA	30V/100mA Max.	
Voltage drop	5.5V Max.	0.7V Max.	
Method of adjusting pressure	Learning button		
Leakage current	1.0mA Max.		
Stored Temp. range	-20~75°C		
Tube O.D.	Φ4mm□ Φ6mm□ Φ1/4"		
Special function	Two sets model□ NO/NC switch		
Production circuit	Power reverse polarity, surge suppression		
Protection	IP40		

[Note1] Two lines type be used under DC20V, leakage current might excess 1mA to lead PLC damage and error acting.

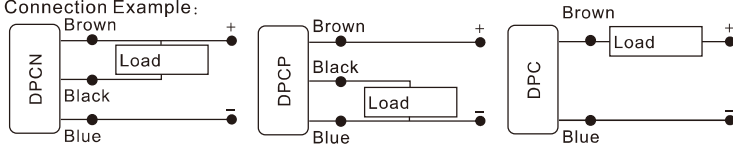
[Note2] If relay be used as joint points, capacitance(>50V/100uF) should be used to recede leakage current.

### Ordering code

DPC □ - □ □ □				
1 2 3 4 5				
① Model	② Output type	③ Measurement range	④ Lead wire length	⑤ Tube O.D.
DPC: Minitype no display pressure switch	Blank: Two-lines N: NPN P: PNP	01: -100kPa~100kPa 10: -100kPa~1000kPa	020: Length 2m 030: Length 3m 050: Length 5m	D4: Φ4mm D6: Φ6mm 08: Φ1/4"

### Installation and application

#### 1. Connection Example:



#### 2. Function operation:

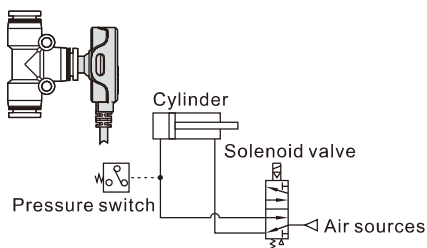
- 2.1) Quick setting: Press the SET button for less than two seconds to finish quick setting.
- 2.2) Middle value setting: Press the SET button for two to five seconds to finish setting valve A; Press the SET button again to finish setting valve B. \* Middle valve = (A+B)/2 \*
- 2.3) N.O./N.C. switch: Press the SET button for six to ten seconds to finish N.O./N.C. switching.
- 2.4) Lock/Unlock switch: Press the SET button for eleven to twenty seconds to finish Lock/Unlock switching.
- 2.5) Factory-fresh state: Press the SET button for over twenty seconds to return factory-fresh state.

#### 3. Notes:

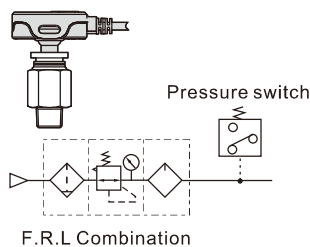
- 3.1) Avoid dropping, beating, impacting which might damage DPC and bring error acting.
- 3.2) Wire line drawing force is 30N, more than this force might damage it.
- 3.3) Causticity or flammability gas and liquid can't be used.
- 3.4) Can't binding with power wire line and higher voltage wire line when wiring.
- 3.5) If use DPC to drive relay, solenoid valve directly which easy create overrun voltage load, the overrun voltage absorb unit should be set.

### Use example

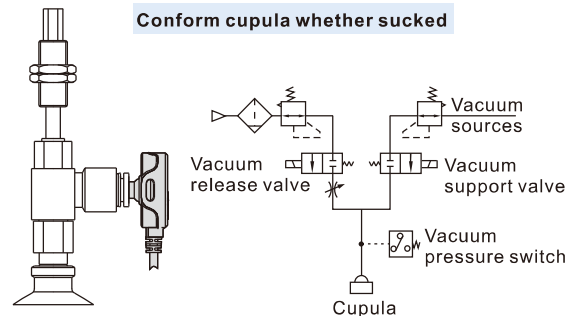
#### Check cylinder pressure



#### Conform air sources pressure



#### Conform cupula whether sucked



# Preparation unit—Accessories

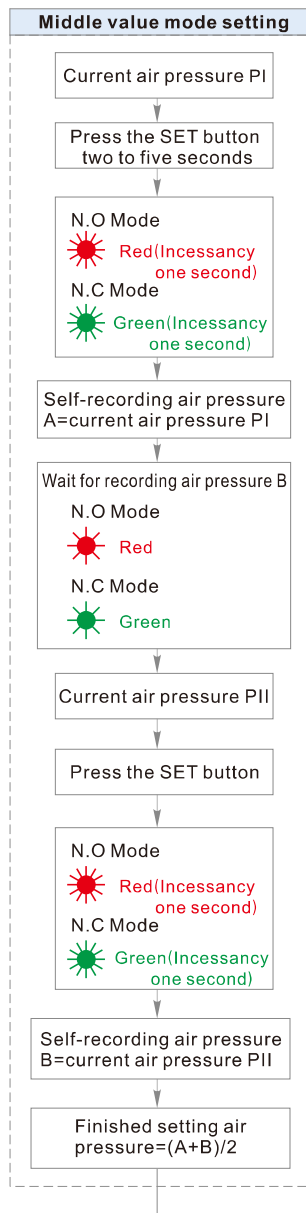
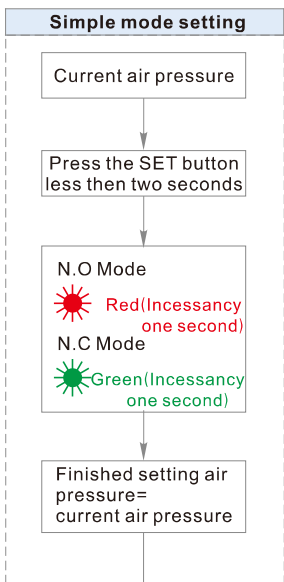
## DPC Series minitype no display pressure switch

### Cresset explanation

● Invariance light    Coruscate quickly(Per 0.1 sec.)    Coruscate(Per 1 sec.)    Slowness coruscate(Per 3 sec.)

Simple mode			Middle value mode		
Light station	DPC station		Light station	DPC station	
	Red(continuance 1 sec.) <input type="checkbox"/> N.O. mode Green(continuance 1 sec.)	Finished setting action		Red(continuance 1 sec.) <input type="checkbox"/> N.O. mode Green(continuance 1 sec.) <input type="checkbox"/> N.C.mode	Finished setting air pressure value
●	Red N.O. mode <input type="checkbox"/> Sense value>Setting value Green N.C. mode <input type="checkbox"/> Sense value<Setting value			Red N.O. mode Green N.C. mode	
	Red N.O. mode <input type="checkbox"/> Sense value<Setting value Green N.C. mode <input type="checkbox"/> Sense value>Setting value		●	Red N.O. mode <input type="checkbox"/> Sense value>Setting value Green N.C. mode <input type="checkbox"/> Sense value<Setting value	
				Red N.O. mode <input type="checkbox"/> Sense value<Setting value Green N.C. mode <input type="checkbox"/> Sense value>Setting value	
To be continued mode			Overrun caution		
Light station	DPC station		Light station	DPC station	
	Red and green counterchange: DPC wait to set			Red and green alternating coruscate: Overrun caution	

### Operation explanation



**N.O./N.C. Mode switch**

Press the SET button six to ten seconds

**Reset(Return to normal station)**

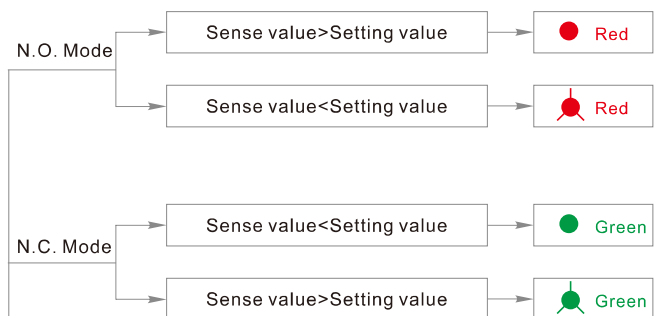
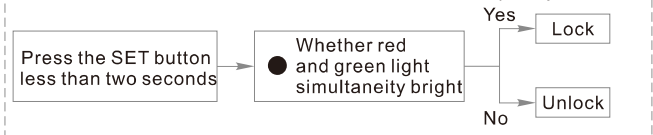
Press the SET button more than ten seconds

	Normal value
Setting value	0kPa
N.O./N.C. Mode	N.O.
Lock/Unlock	Unlock

**Lock/Unlock Mode**

1. Lock: To be continued more than 120 seconds  self-lock
2. Unlock: Press the SET button two seconds  self-unlock

\* Differentiate the button whether "Lock" station quickly



**[Note] Overrun caution**

- (1) -100kPa~100kPa:  
When air pressure lower or higher than measurement range, the red light and green light will alternating coruscate quickly, please resume to measurement range.
- (2) -100kPa~1000kPa:  
When air pressure lower or higher than measurement range, the red light and green light will alternating coruscate quickly, please resume to measurement range.