

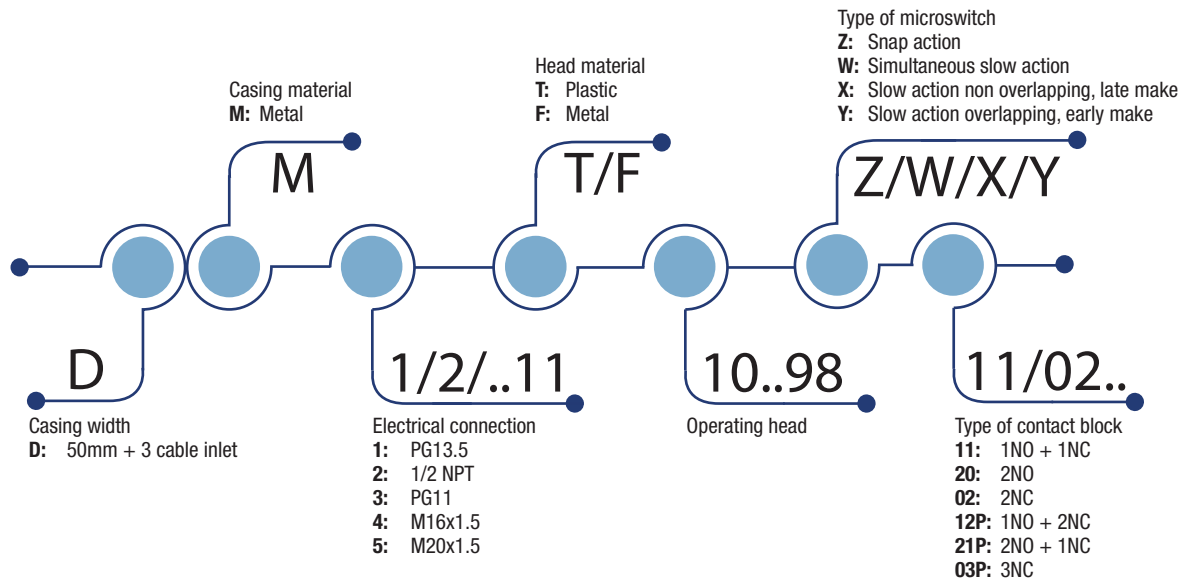
Limit Switches **DM series**

Summary

APPROVALS: UL 508 / CSA C22-2 N. 14 / IEC 60947-5-1



CB-SCHEME certification according to IEC 60947-5-1



HOW IS IT MADE?

01 A variety of actuators

- Plain plunger
- Roller plunger
- Roller lever, adjustable or not, etc.

02 Wide range of heads

- Assembled using 4 x Ø3 screws

03 Casing:

- 50 mm. width

04 Mounting screws

- 2 or 4 x M4 screws on top part

05 Cover

- 4 screws Ø3 pozidriv 1

06 Contact Block

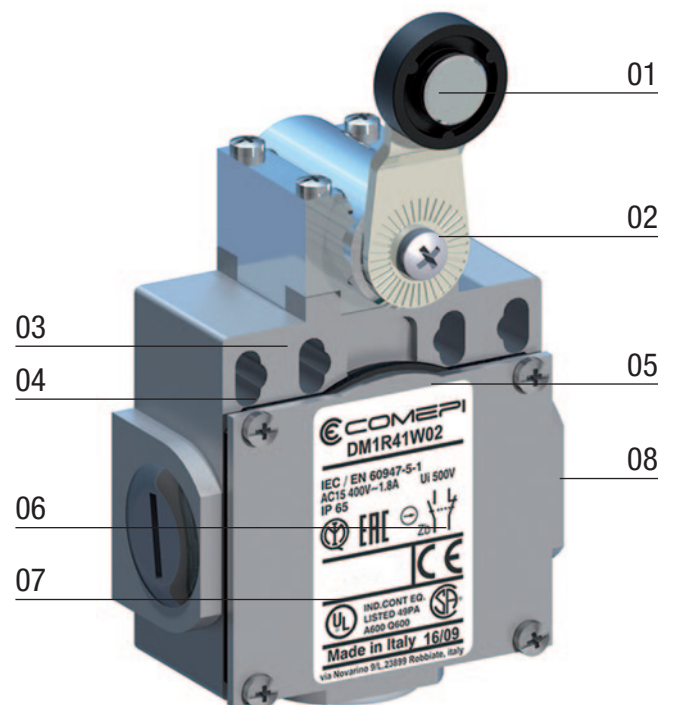
- Positive opening operation
- Snap action or slow action
- Electrically separated contacts

07 Connecting terminals

- Block of 2 contacts: M3.5 (+, -) pozidriv 2 screw
- Block of 3 contacts: M3 (+, -) screw
- Screw head with captive cable clamp
- Markings conform with IEC 60947-1, IEC 60947-5-1 standards

08 Electrical connection

- 3 x threaded cable inlets suitable for cable gland



Limit Switches **DM series**

Description

APPLICATIONS

Easy to use, electromechanical limit switches offer specific qualities:

- Visible operation.
- Able to switch strong currents (10 A conventional thermal current).
- Electrically separated contacts.
- Precise operating points (consistency).
- Immune to electromagnetic disturbances.

They are purpose-built detection devices thanks to these characteristics:

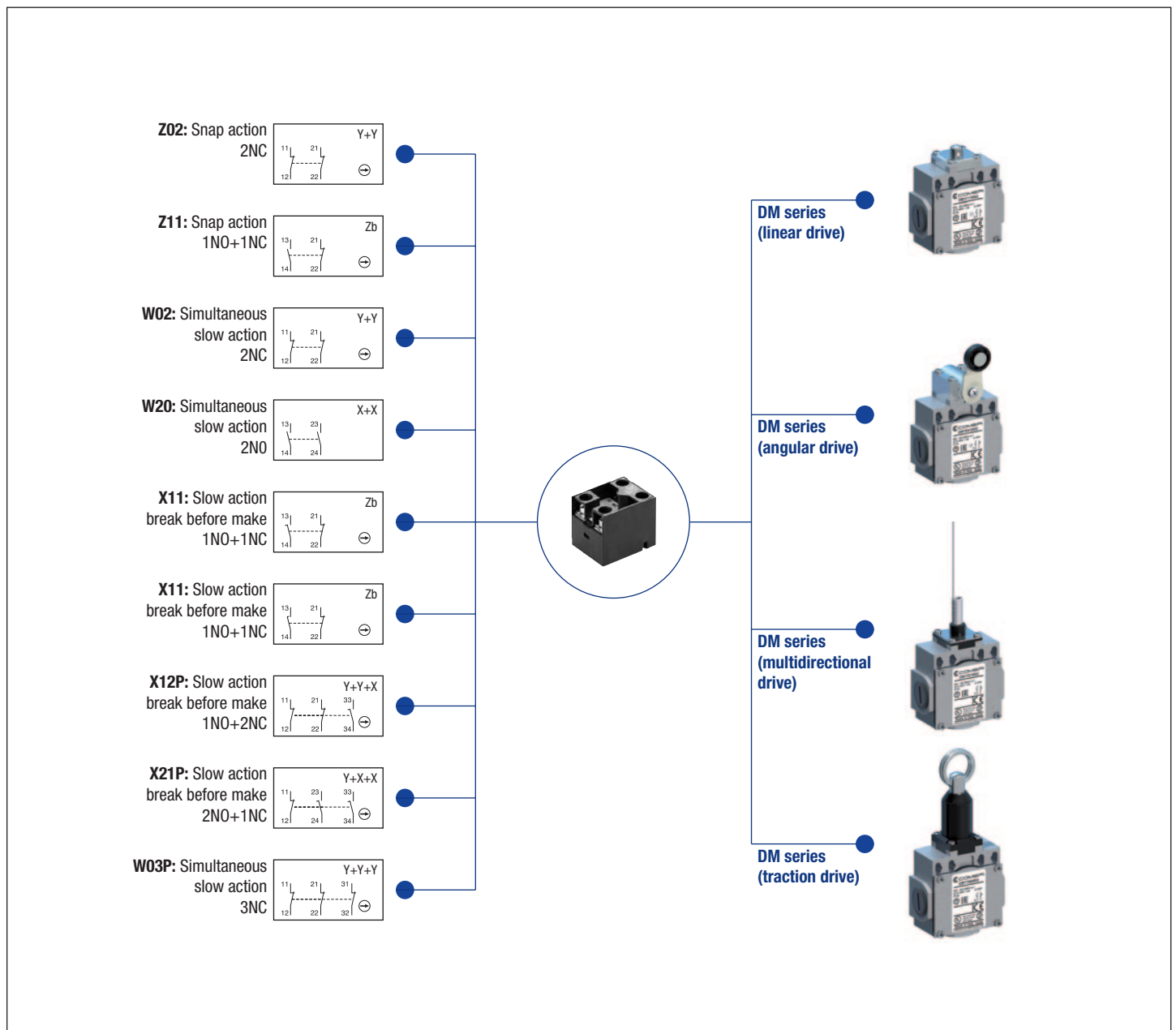
- Presence/absence.
- Positioning and travel limit.
- Objects passing/counting.

DESCRIPTION

Limit switches, which are made of zinc alloy (Zamak), offer a degree of protection of IP66.

They comply with the requirements of European Directives (Low Voltage and RoHS) and are conform to European and International Standards.

The CE declaration of these products are available in the download section of website www.comepi.it or by writing to the following email address: tecnico@comepi.it
DDC02 - Limit Switches.



Limit Switches **DM series**

Technical Data

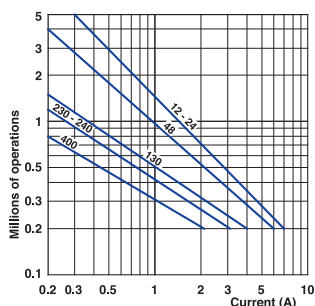
	DM Series	
Standards	IEC 60947-5-1 EN 60947-5-1	
Certifications - Approvals	UL - CSA - IMQ - EAC - CCC - UKCA	
Air temperature near the device		
– during operation	°C	– 25 ... + 70
– for storage	°C	– 30 ... + 80
Mounting positions	All positions are authorised	
Protection against electrical shocks (acc. to IEC 61140)	Class I	
Degree of protection (according to IEC 60529 and EN 60529)	IP 66	

Electrical Data

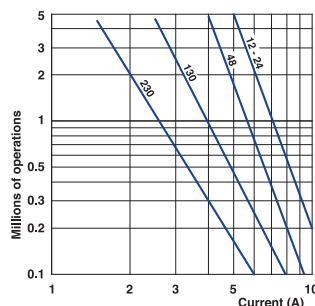
Rated insulation voltage U_i - according to IEC 60947-1 and EN 60947-1 - according to UL 508 and CSA C22-2 n° 14	500 V (degree of pollution 3) (400 V for contacts type Z02, X12P, X21P, W03P) A 300, Q 300	
Rated impulse withstand voltage U_{imp} (according to IEC 60947-1 and EN 60947-1)	kV	6
Conventional free air thermal current I_{th} (according to IEC 60947-5-1) $\theta < 40$ °C	A	10
Short-circuit protection $U_e < 500$ V a.c. - gG (gl) type fuses	A	10
Rated operational current I_e / AC-15 (according to IEC 60947-5-1)	24 V - 50/60 Hz A 120 V - 50/60 Hz A 400 V - 50/60 Hz A	10 6 4
I_e / DC-13 (according to IEC 60947-5-1)	24 V - d.c. A 125 V - d.c. A 250 V - d.c. A	6 0.55 0.4
Switching frequency	Cycles/h	3600
Load factor		0.5
Resistance between contacts	m Ω	25
Connecting terminals	M3.5 (+, -) pozidriv 2 screw with cable clamp (M3 for 3 poles contacts type)	
Terminal for protective conductor	M3.5 (+, -) pozidriv 2 screw with cable clamp	
Connecting capacity	1 or 2 x mm ²	0.34 ... 2.5 (0.34... 1.5 for 3 poles contacts type)
Terminal marking	According to IEC 60947-5-1	
Recommended tightening torque	Metal	
Cover	0,8Nm, max 0,9	
Head	0,8Nm, max 0,9	
Microswitch	0,8Nm, max 0,9	
Mechanical durability	15 millions of operations 10 millions of operations >5 millions of operations	F11; F12; T21; T2101; T30...34; T38 F41...46; F51...56; F61...75 T14; T35; T36; T39; T91...93; T98
Electrical durability (according to IEC 60947-5-1)	Utilization categories AC-15 and DC-13 (Load factor of 0.5 according to curves below)	

* except for F52, F5200, F55, F5500, F73, F74, T92, T93: the degree of protection is IP65

AC-15 - Snap action



AC-15 - Slow action



DC-13	Snap action	Slow action
	Power breaking for a durability of 5 million operating cycles	
Voltage 24 V	9.5 W	12 W
Voltage 48 V	6.8 W	9 W
Voltage 110 V	3.6 W	6 W

Limit Switches **DM series**

Technical Data

Technical data approved by IMQ

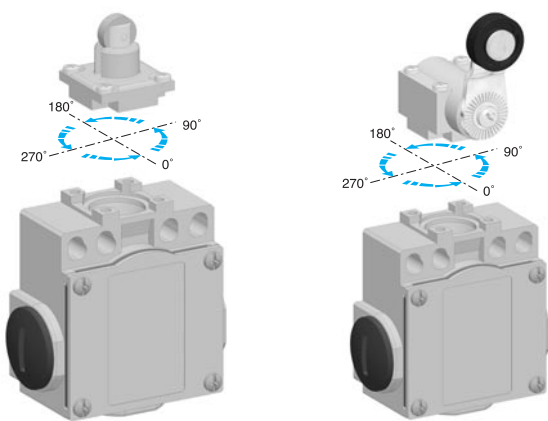
Standards	Devices conform with international IEC 60947-5-1 and European EN 60947-5-1 standards	
Degree of protection	IP 66*	
Rated insulation voltage U_i	500 V (degree of pollution 3) (400V for type Z02, X12P, X21P, W03P)	
Rated impulse withstand voltage U_{imp}	6 kV	
Conventional free air thermal current I_{th}	10 A	
Short-circuit protection - gG (gl) type fuses	10 A	
Rated operational current		
I_e / AC-15	24 V - 50/60 Hz	10 A
	400 V - 50/60 Hz	4 A
I_e / DC-13	24 V - d.c.	6 A
	125 V - d.c.	0.55 A
	250 V - d.c.	0.4 A

* except for F52, F5200, F55, F5500, F73, F74, T92, T93: the degree of protection is IP65

IMPLEMENTATION

Operating head orientation

The head can be rotated each 90°. Recommended tightening torque 0,5 Nm (max 0,8 Nm).



Technical data approved by UL

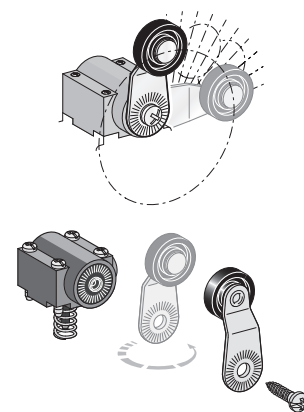
Standards	Devices conform with UL 508
Contact blocks type Z11, X11, Y11, W02 and Z02	
Utilization categories	A300, Q300
Contact blocks type X12P, X21P and W03P	
Utilization categories	A300, Q300

Use 60/75°C copper (Cu) conductor only. Wire rages 14-18 AWG stranded or solid. The terminal tightening torque of 7 lbs-in / 0.78 Nm. Suitable for conduit connection only with use of adapter sleeve optionally provided or recommended by the manufacturer.

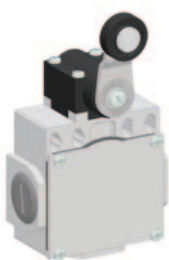
For the complete list of approved products, contact our technical department

Lever adjustment

The lever of the angular actuators can be adjusted every 10° and round turned in order to obtain the maximum flexibility on the working plan. Recommended tightening torque 0,5 Nm (max 0,8 Nm).



Special Versions



Plastic actuators

The operating heads used in plastic limit switches AP and DP series have the same dimensions of the ones used in the corresponding metal AM and DM series. It is therefore possible to supply "mixed" versions, that is:

- plastic operating head on metal casing
- metal operating head on plastic casing

Manual reset operating head

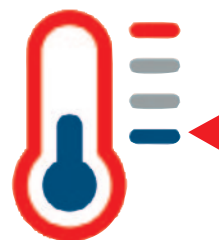
Limit switches equipped with special operating head with manual reset button.

For more information:



For further informations, please contact our technical department.

Low Temperature



The limit switches for low temperature applications are useful for refrigerated cells or equipments where the air operational temperature is very low. These devices, made in special materials, are able to extend the operational temperature range down to -40°C, maintaining mechanical performances intact.

To order add the digits "40" following the operating head indication in part number.

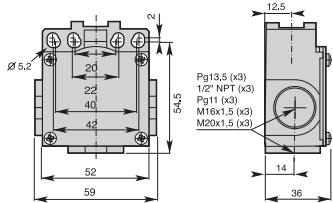
For example: DM1F11Z11 → DM1F1140Z11

Limit Switches **DM_F/DM_T** series

Metal casing IP66 - 50 mm. width

Electrical connection:

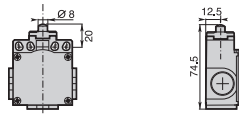
- DM1:** three cable inlets for PG 13,5 Cable Gland
- DM2:** three cable inlets for 1/2" NPT Cable Gland
- DM3:** three cable inlets for PG11 Cable Gland
- DM4:** three cable inlets for M16 x 1,5 Cable Gland
- DM5:** three cable inlets for M20 x 1,5 Cable Gland



Contact Blocks

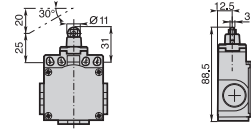
Z11 (1NO + 1NC)	DM•F11Z11	DM•F12Z11	DM•T14Z11
X11 (1NO + 1NC)	DM•F11X11	DM•F12X11	DM•T14X11
Y11 (1NO + 1NC)	DM•F11Y11	DM•F12Y11	DM•T14Y11
W02 (2NC)	DM•F11W02	DM•F12W02	DM•T14W02
W20 (2NO)	DM•F11W20	DM•F12W20	DM•T14W20
Z02 (2NC)	DM•F11Z02	DM•F12Z02	DM•T14Z02
X12P (1NO + 2NC)	DM•F11X12P	DM•F12X12P	DM•T14X12P
X21P (2NO + 1NC)	DM•F11X21P	DM•F12X21P	DM•T14X21P
W03P (3NC)	DM•F11W03P	DM•F12W03P	DM•T14W03P

F11 - Plain metal plunger



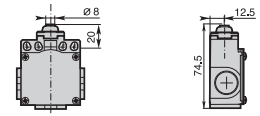
Min. actuating force
Weight **15N (30N ⇄)**
270 g

F12 - Metal roller plunger



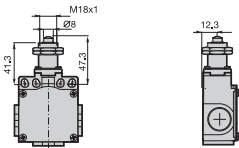
Min. actuating force
Weight **12N (30N ⇄)**
280 g

T14 - Metal plunger with dust protection cup



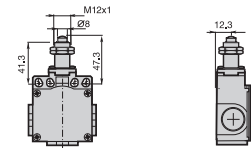
Min. actuating force
Weight **15N (30N ⇄)**
255 g

T21 - Plain plunger with M18x1 fixing nuts



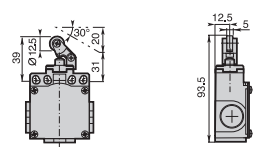
Min. actuating force
Weight **15N (30N ⇄)**
265 g

T2101 - Plain plunger with M12x1 fixing nuts



Min. actuating force
Weight **15N (30N ⇄)**
265 g

T30 - Plastic roller lever on plastic plunger



Min. actuating force
Weight **7N (24N ⇄)**
260 g

Contact Blocks

Z11 (1NO + 1NC)	DM•T21Z11	DM•T2101Z11	DM•T30Z11
X11 (1NO + 1NC)	DM•T21X11	DM•T2101X11	DM•T30X11
Y11 (1NO + 1NC)	DM•T21Y11	DM•T2101Y11	DM•T30Y11
W02 (2NC)	DM•T21W02	DM•T2101W02	DM•T30W02
W20 (2NO)	DM•T21W20	DM•T2101W20	DM•T30W20
Z02 (2NC)	DM•T21Z02	DM•T2101Z02	DM•T30Z02
X12P (1NO + 2NC)	DM•T21X12P	DM•T2101X12P	DM•T30X12P
X21P (2NO + 1NC)	DM•T21X21P	DM•T2101X21P	DM•T30X21P
W03P (3NC)	DM•T21W03P	DM•T2101W03P	DM•T30W03P

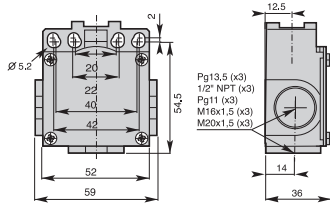
Operation diagrams: page 123 - All dimensions are in mm

Limit Switches DM_F/DM_T series

Metal casing IP66 - 50 mm. width

Electrical connection:

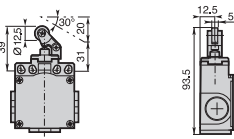
- DM1:** three cable inlets for PG 13,5 Cable Gland
- DM2:** three cable inlets for 1/2" NPT Cable Gland
- DM3:** three cable inlets for PG11 Cable Gland
- DM4:** three cable inlets for M16 x 1,5 Cable Gland
- DM5:** three cable inlets for M20 x 1,5 Cable Gland



Contact Blocks

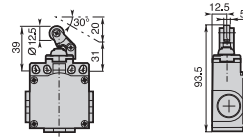
Z11 (1NO + 1NC)	DM•T31Z11	DM•T35Z11	DM•T38Z11
X11 (1NO + 1NC)	DM•T31X11	DM•T35X11	DM•T38X11
Y11 (1NO + 1NC)	DM•T31Y11	DM•T35Y11	DM•T38Y11
W02 (2NC)	DM•T31W02	DM•T35W02	DM•T38W02
W20 (2NO)	DM•T31W20	DM•T35W20	DM•T38W20
Z02 (2NC)	DM•T31Z02	DM•T35Z02	DM•T38Z02
X12P (1NO + 2NC)	DM•T31X12P	DM•T35X12P	DM•T38X12P
X21P (2NO + 1NC)	DM•T31X21P	DM•T35X21P	DM•T38X21P
W03P (3NC)	DM•T31W03P	DM•T35W03P	DM•T38W03P

T31 - Plastic roller lever on metal plunger



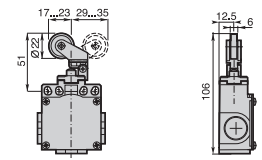
Min. actuating force
Weight **7N (24N ⇄)**
260 g

T35 - Plastic roller lever on metal plunger with dust protection cup



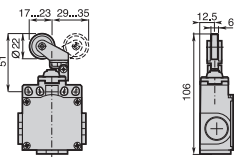
Min. actuating force
Weight **7N (24N ⇄)**
260 g

T38 - Adjustable plastic roller lever on metal plunger



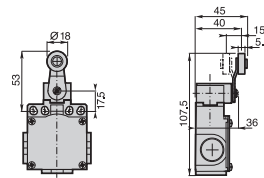
Min. actuating force
Weight **7N (24N ⇄)**
265 g

T39 - Adjustable plastic roller lever on metal plunger with dust protection cup



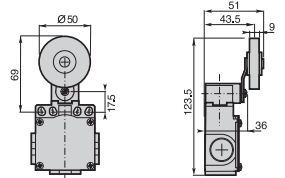
Min. actuating force
Weight **7N (24N ⇄)**
265 g

F41 - Ø 18 nylon roller



Min. actuating torque
Weight **0,10Nm (0,32Nm ⇄)**
320 g

F42 - Ø 50 rubber roller lever



Min. actuating torque
Weight **0,10Nm (0,32Nm ⇄)**
345 g

Contact Blocks

Z11 (1NO + 1NC)	DM•T39Z11	DM•F41Z11	DM•F42Z11
X11 (1NO + 1NC)	DM•T39X11	DM•F41X11	DM•F42X11
Y11 (1NO + 1NC)	DM•T39Y11	DM•F41Y11	DM•F42Y11
W02 (2NC)	DM•T39W02	DM•F41W02	DM•F42W02
W20 (2NO)	DM•T39W20	DM•F41W20	DM•F42W20
Z02 (2NC)	DM•T39Z02	DM•F41Z02	DM•F42Z02
X12P (1NO + 2NC)	DM•T39X12P	DM•F41X12P	DM•F42X12P
X21P (2NO + 1NC)	DM•T39X21P	DM•F41X21P	DM•F42X21P
W03P (3NC)	DM•T39W03P	DM•F41W03P	DM•F42W03P

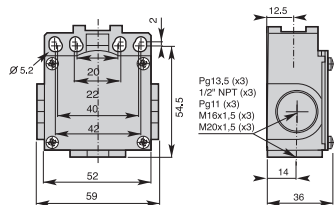
Operation diagrams: page 123 - All dimensions are in mm

Limit Switches **DM_F/DM_T** series

Metal casing IP66 - 50 mm. width

Electrical connection:

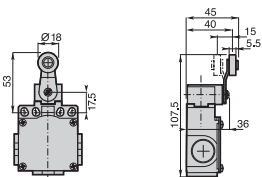
- DM1:** three cable inlets for PG 13,5 Cable Gland
- DM2:** three cable inlets for 1/2" NPT Cable Gland
- DM3:** three cable inlets for PG11 Cable Gland
- DM4:** three cable inlets for M16 x 1,5 Cable Gland
- DM5:** three cable inlets for M20 x 1,5 Cable Gland



Contact Blocks

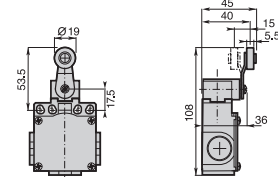
Z11 (1NO + 1NC)	DM•F43Z11	DM•F44Z11	DM•F45Z11
X11 (1NO + 1NC)	DM•F43X11	DM•F44X11	DM•F45X11
Y11 (1NO + 1NC)	DM•F43Y11	DM•F44Y11	DM•F45Y11
W02 (2NC)	DM•F43W02	DM•F44W02	DM•F45W02
W20 (2NO)	DM•F43W20	DM•F44W20	DM•F45W20
Z02 (2NC)	DM•F43Z02	DM•F44Z02	DM•F45Z02
X12P (1NO + 2NC)	DM•F43X12P	DM•F44X12P	DM•F45X12P
X21P (2NO + 1NC)	DM•F43X21P	DM•F44X21P	DM•F45X21P
W03P (3NC)	DM•F43W03P	DM•F44W03P	DM•F45W03P

F43 - Ø 18 metal roller lever



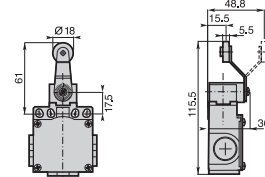
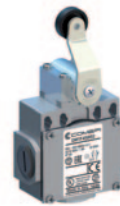
Min. actuating torque 0,10Nm (0,32Nm ⊖)
Weight 325 g

F44 - Ø 19 steel ball bearing roller lever



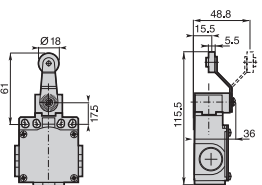
Min. actuating torque 0,10Nm (0,32Nm ⊖)
Weight 325 g

F45 - Ø 18 nylon roller lever



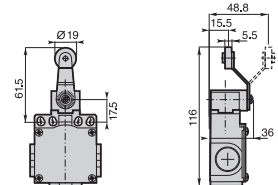
Min. actuating torque 0,10Nm (0,32Nm ⊖)
Weight 335 g

F46 - Ø 18 metal roller lever



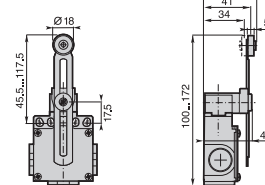
Min. actuating torque 0,10Nm (0,32Nm ⊖)
Weight 340 g

F47 - Ø 19 steel ball bearing roller lever



Min. actuating torque 0,10Nm (0,32Nm ⊖)
Weight 340 g

F51 - Adjustable lever with Ø 18 nylon roller



Min. actuating torque 0,10Nm (0,32Nm ⊖)
Weight 335 g

Contact Blocks

Z11 (1NO + 1NC)	DM•F46Z11	DM•F47Z11	DM•F51Z11
X11 (1NO + 1NC)	DM•F46X11	DM•F47X11	DM•F51X11
Y11 (1NO + 1NC)	DM•F46Y11	DM•F47Y11	DM•F51Y11
W02 (2NC)	DM•F46W02	DM•F47W02	DM•F51W02
W20 (2NO)	DM•F46W20	DM•F47W20	DM•F51W20
Z02 (2NC)	DM•F46Z02	DM•F47Z02	DM•F51Z02
X12P (1NO + 2NC)	DM•F46X12P	DM•F47X12P	DM•F51X12P
X21P (2NO + 1NC)	DM•F46X21P	DM•F47X21P	DM•F51X21P
W03P (3NC)	DM•F46W03P	DM•F47W03P	DM•F51W03P

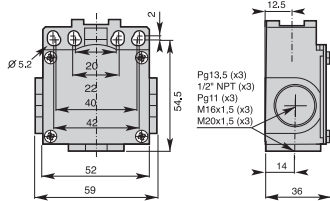
Operation diagrams: page 123 - All dimensions are in mm

Limit Switches DM_F/DM_T series

Metal casing IP66 - 50 mm. width

Electrical connection:

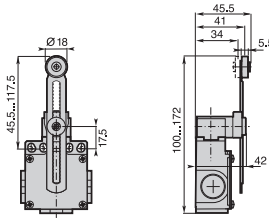
- DM1:** three cable inlets for PG 13,5 Cable Gland
- DM2:** three cable inlets for 1/2" NPT Cable Gland
- DM3:** three cable inlets for PG11 Cable Gland
- DM4:** three cable inlets for M16 x 1,5 Cable Gland
- DM5:** three cable inlets for M20 x 1,5 Cable Gland



Contact Blocks

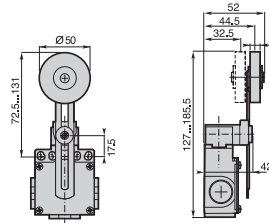
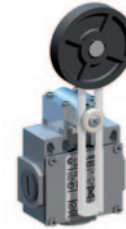
- Z11 (1NO + 1NC)
- X11 (1NO + 1NC)
- Y11 (1NO + 1NC)
- W02 (2NC)
- W20 (2NO)
- Z02 (2NC)
- X12P (1NO + 2NC)
- X21P (2NO + 1NC)
- W03P (3NC)

F100 - Adjustable toothed lever (step 2 mm) with Ø 18 nylon roller



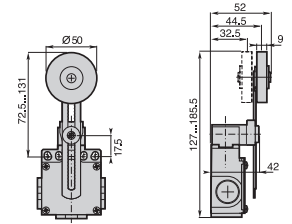
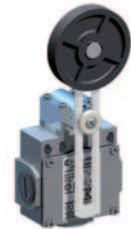
Min. actuating torque **0,10Nm (0,32Nm ⊖)**
Weight **335 g**

F52 - Adjustable lever with Ø 50 rubber roller



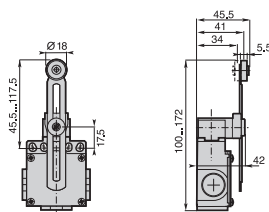
Min. actuating torque **0,10Nm (0,32Nm ⊖)**
Weight **355 g**

F5200 - Adjustable toothed lever (step 2 mm) with Ø 50 rubber roller



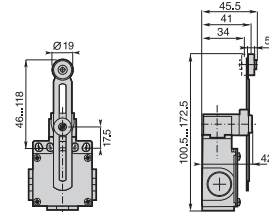
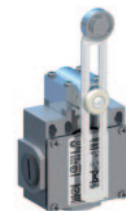
Min. actuating torque **0,10Nm (0,32Nm ⊖)**
Weight **355 g**

F53 - Adjustable lever with Ø 18 metal roller



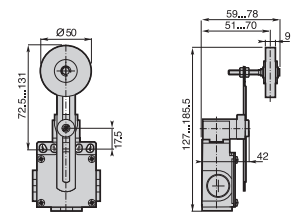
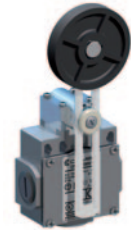
Min. actuating torque **0,10Nm (0,32Nm ⊖)**
Weight **340 g**

F54 - Adjustable lever with Ø 19 steel ball bearing roller



Min. actuating torque **0,10Nm (0,32Nm ⊖)**
Weight **340 g**

F55 - Adjustable lever with adjustable Ø 50 rubber roller



Min. actuating torque **0,10Nm (0,32Nm ⊖)**
Weight **355 g**

Contact Blocks

- Z11 (1NO + 1NC)
- X11 (1NO + 1NC)
- Y11 (1NO + 1NC)
- W02 (2NC)
- W20 (2NO)
- Z02 (2NC)
- X12P (1NO + 2NC)
- X21P (2NO + 1NC)
- W03P (3NC)

- DM•F53Z11
- DM•F53X11
- DM•F53Y11
- DM•F53W02
- DM•F53W20
- DM•F53Z02
- DM•F53X12P
- DM•F53X21P
- DM•F53W03P

- DM•F54Z11
- DM•F54X11
- DM•F54Y11
- DM•F54W02
- DM•F54W20
- DM•F54Z02
- DM•F54X12P
- DM•F54X21P
- DM•F54W03P

- DM•F55Z11
- DM•F55X11
- DM•F55Y11
- DM•F55W02
- DM•F55W20
- DM•F55Z02
- DM•F55X12P
- DM•F55X21P
- DM•F55W03P

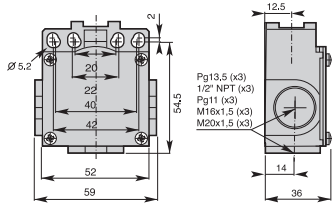
Operation diagrams: page 123 - All dimensions are in mm

Limit Switches **DM_F/DM_T** series

Metal casing IP66 - 50 mm. width

Electrical connection:

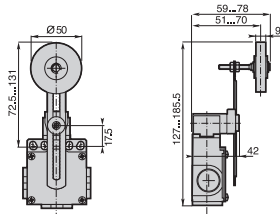
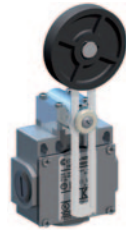
- DM1:** three cable inlets for PG 13,5 Cable Gland
- DM2:** three cable inlets for 1/2" NPT Cable Gland
- DM3:** three cable inlets for PG11 Cable Gland
- DM4:** three cable inlets for M16 x 1,5 Cable Gland
- DM5:** three cable inlets for M20 x 1,5 Cable Gland



Contact Blocks

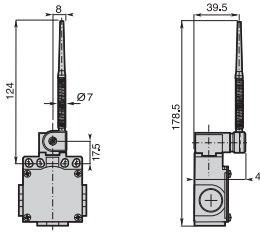
- Z11** (1NO + 1NC)
- X11** (1NO + 1NC)
- Y11** (1NO + 1NC)
- W02** (2NC)
- W20** (2NO)
- Z02** (2NC)
- X12P** (1NO + 2NC)
- X21P** (2NO + 1NC)
- W03P** (3NC)

F500 - Adjustable toothed lever with $\varnothing 50$ rubber roller



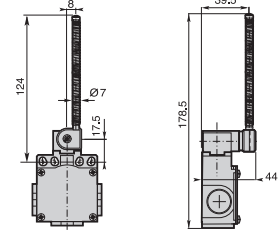
Min. actuating torque **0,10Nm (0,32Nm \ominus)**
Weight **355 g**

F61 - Nylon actuator with stainless steel spring



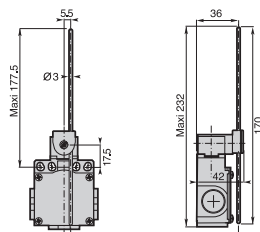
Min. actuating torque **0,10Nm**
Weight **305 g**

F62 - Stainless steel spring actuator



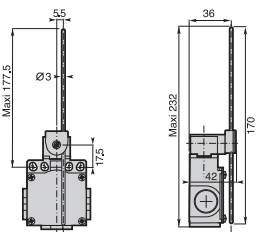
Min. actuating torque **0,10Nm**
Weight **305 g**

F71 - Adjustable $\varnothing 3$ rod lever with stainless steel rod



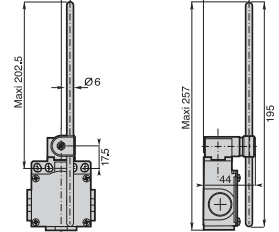
Min. actuating torque **0,10Nm (0,32Nm \ominus)**
Weight **380 g**

F72 - Adjustable $\varnothing 3$ rod lever with fiberglass rod



Min. actuating torque **0,10Nm (0,32Nm \ominus)**
Weight **380 g**

F73 - Adjustable $\varnothing 6$ rod lever with nylon rod



Min. actuating torque **0,10Nm (0,32Nm \ominus)**
Weight **390 g**

Contact Blocks

- Z11** (1NO + 1NC)
- X11** (1NO + 1NC)
- Y11** (1NO + 1NC)
- W02** (2NC)
- W20** (2NO)
- Z02** (2NC)
- X12P** (1NO + 2NC)
- X21P** (2NO + 1NC)
- W03P** (3NC)

- DM•F71Z11
- DM•F71X11
- DM•F71Y11
- DM•F71W02
- DM•F71W20
- DM•F71Z02
- DM•F71X12P
- DM•F71X21P
- DM•F71W03P

- DM•F72Z11
- DM•F72X11
- DM•F72Y11
- DM•F72W02
- DM•F72W20
- DM•F72Z02
- DM•F72X12P
- DM•F72X21P
- DM•F72W03P

- DM•F73Z11
- DM•F73X11
- DM•F73Y11
- DM•F73W02
- DM•F73W20
- DM•F73Z02
- DM•F73X12P
- DM•F73X21P
- DM•F73W03P

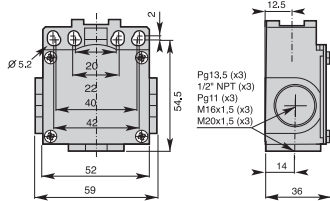
Operation diagrams: page 123 - All dimensions are in mm

Limit Switches DM_F/DM_T series

Metal casing IP66 - 50 mm. width

Electrical connection:

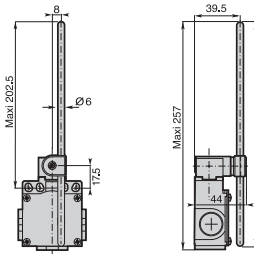
- DM1:** three cable inlets for PG 13,5 Cable Gland
- DM2:** three cable inlets for 1/2" NPT Cable Gland
- DM3:** three cable inlets for PG11 Cable Gland
- DM4:** three cable inlets for M16 x 1,5 Cable Gland
- DM5:** three cable inlets for M20 x 1,5 Cable Gland



Contact Blocks

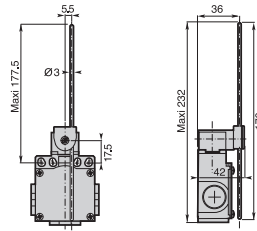
- Z11** (1NO + 1NC)
- X11** (1NO + 1NC)
- Y11** (1NO + 1NC)
- W02** (2NC)
- W20** (2NO)
- Z02** (2NC)
- X12P** (1NO + 2NC)
- X21P** (2NO + 1NC)
- W03P** (3NC)

F74 - Adjustable Ø 6 rod lever with fiberglass rod



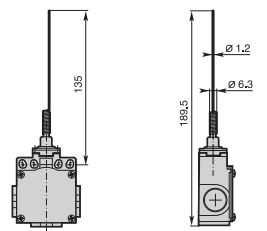
Min. actuating torque **0,10Nm (0,32Nm ⊖)**
Weight **390 g**

T75 - Adjustable 3x3 square steel rod lever



Min. actuating torque **0,10Nm (0,32Nm ⊖)**
Weight **380 g**

T91 - Stainless steel spring multidirectional actuator



Min. actuating torque **0,12Nm**
Weight **265 g**

DM•F74Z11

DM•F74X11

DM•F74Y11

DM•F74W02

DM•F74W20

DM•F74Z02

DM•F74X12P

DM•F74X21P

DM•F74W03P

DM•F75Z11

DM•F75X11

DM•F75Y11

DM•F75W02

DM•F75W20

DM•F75Z02

DM•F75X12P

DM•F75X21P

DM•F75W03P

DM•T91Z11

DM•T91X11

DM•T91Y11

DM•T91W02

DM•T91W20

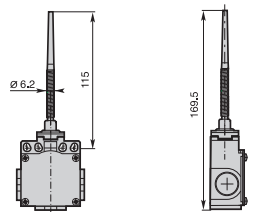
DM•T91Z02

DM•T91X12P

DM•T91X21P

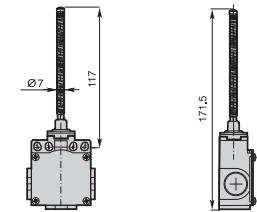
DM•T91W03P

T92 - Multidirectional nylon actuator with stainless steel spring



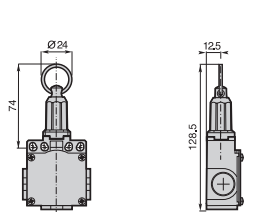
Min. actuating torque **0,12Nm**
Weight **270 g**

T93 - Stainless steel spring multidirectional actuator



Min. actuating torque **0,12Nm**
Weight **275 g**

T98 - Pull action with ring



Min. actuating force **30N**
Weight **300 g**

DM•T92Z11

DM•T92X11

DM•T92Y11

DM•T92W02

DM•T92W20

DM•T92Z02

DM•T92X12P

DM•T92X21P

DM•T92W03P

DM•T93Z11

DM•T93X11

DM•T93Y11

DM•T93W02

DM•T93W20

DM•T93Z02

DM•T93X12P

DM•T93X21P

DM•T93W03P

DM•T98Z11A

DM•T98X11A

DM•T98Y11A

DM•T98W02A

DM•T98W20A

Operation diagrams: page 123 - All dimensions are in mm