



Accessori standard in ottone



Brass standard accessories



Standardverschraubungen Messing



Accessoires standard laiton



Accesorios estándar en latón

AS51



AS51OR



AS52K



AS53



AS54K



AS54



AS54OR



AS54S



AS54P



AS55K



AS55



AS55OR



AS56



AS57



AS57OR-E



AS57OR



AS57K



AS57B



AS58



AS79



AS79K



AS59



AS60K



AS60



AS61



AS62K



AS63K



AS64



AS65K



AS66K



AS67K



AS68K



AS69D



AS69



AS69K



AS69OR



AS69KL



AS70K



AS72



AS73



AS75K



AS76



AS77



AS80K



AS81K



AS82K



AS83KG



AS83G



AS87



AS88



AS87OR



AS88OR



AS91



AS92N



-  **Dati tecnici degli accessori standard in ottone**
-  **Brass standard accessories technical data**
-  **Technischen Daten der Standardverschraubungen Messing**
-  **Données techniques des accessoires standard en laiton**
-  **Datos técnicos de los accesorios estándar en latón**

### **Caratteristiche principali**

1. Gamma completa M5 - 1"
2. Filettatura BSPP cilindrica UNI-ISO228 (con O-Ring), BSPT conica UNI-ISO 7 teflonata, Metrica ISO/R 262
3. Guarnizione in NBR Silicon free
4. Compatibilità numerosi fluidi industriali
5. Vasta gamma
6. Robustezza meccanica

### **Main features**

1. Complete Range M5 - 1"
2. Threading BSPP cylindrical UNI-ISO228 (with O-Ring), BSPT conical teflon-coated UNI-ISO 7, ISO/R 262 metric
3. Silicon free NBR seal
4. All Fluids compatible
5. Wide range
6. Mechanical Resistance

### **Hauptmerkmale**

1. Vollständiges Sortiment M5 - 1"
2. BSPP zylindrisches Gewinde UNI-ISO228 (mit O-Ring), teflonbeschichtet UNI-ISO 7 BSPT, metrische ISO/R 262
3. Silikonfreie NBR-Dichtung
4. Kompatibel mit allen Medien
5. Große Auswahl
6. Mechanische Festigkeit

### **Principales caractéristiques**

1. Gamme complète M5 - 1"
2. Filetage BSPP cylindrique UNI-ISO228 (avec joint torique), BSPT conique UNI-ISO 7 avec téflon, ISO/R 262 métrique
3. Garniture NBR sans silicone
4. Tous fluides compatibles
5. Large gamme
6. Résistance mécanique

### **Características principales**

1. Gama completa M5-1"
2. Roscado BSPP cilíndrica UNI-ISO228 (con junta tórica), BSPT cónica UNI-ISO 7 con teflón, métrica ISO/R 262
3. Guarnición en NBR sin silicona
4. Compatibilidad con numerosos fluidos industriales
5. Amplia gama
6. Robustez mecánica

### **Applicazioni**

1. Aria Compressa
2. Impianti per automazione pneumatica
3. Gas inerti, vapore, fluidi
4. Circuiti acqua industriale
5. Vuoto

### **Applications**

1. Compressed Air
2. Systems for pneumatic automation
3. Inert Gases, Fluids, Steam
4. Industrial water circuits
5. Vacuum

### **Anwendungen**

1. Druckluft
2. Systeme für die pneumatische Automatisierung
3. Inertgase, Flüssigkeiten, Dampf
4. Industrielle Wasserkreisläufe
5. Leer

### **Applications**

1. Air comprimé
2. Installations pour l'automatisation pneumatique
3. Gaz neutres, vapeur
4. Circuits d'eau industrielle
5. Vide

### **Aplicaciones**

1. Aire comprimido
2. Instalaciones para automación neumática
3. Gases inertes, vapor, fluidos
4. Circuitos de agua industrial
5. Vacío

### **Materiali**

**Corpo:** Ottone nichelato CW614N / CW617N

### **Materials**

**Body:** Nickel plated brass CW614N / CW617N

### **Werkstoffen**






**Körper:** vernickelt Messing CW614N/CW617N

### **Matériels**

**Corps:** Laiton nickelé CW614N / CW617N

### **Materiales**

**Cuerpo:** Latón niquelado CW614N / CW617N

 <b>Pressione e temperatura</b>	 <b>Pressure and Temperature</b>	 <b>Druck und Temperatur</b>	 <b>Pression et Température</b>	 <b>Presión y Temperatura</b>
<b>Filetti - Threads - Gewinde - Filets - Roscas</b>		<b>Pressione massima - Maximum pressure</b> <i>Maximum druck - Pression maximale - Presión máxima</i>		
	1/8		150 bar	
	1/4		100 bar	
	3/8		75 bar	
	1/2		50 bar	
	3/4		85 bar	
	1"		80 bar	
Temperatura: 0°C / +70°C		Temperature: +32°F / +158°F	Temperatur: 0°C / +70°C	Température: 0°C / +70°C

## 🇮🇹 **Fluido**

Acqua, olio, aria compressa

## 🇬🇧 **Fluid**

Water, oils, compressed air

## 🇩🇪 **Fluid**

Wasser, oel, druckluft

## 🇫🇷 **Fluide**

Eau, huile, air comprimé

## 🇪🇸 **Fluido**

Agua, aceite, aire comprimido

## 🇮🇹 **Filettatura**

BSPP cilindrica UNI-ISO228 (con O-Ring).  
BSPT conica UNI-ISO 7 teflonata.  
Metrica ISO/R 262.

## 🇬🇧 **Thread types**

BSPP parallel UNI-ISO228 (with O-Ring).  
BSPT taper UNI-ISO 7 with teflon.  
Metric ISO/R 262.

## 🇩🇪 **Gewinde**

BSPP zylindrisch UNI-ISO228 (mit O-Ring).  
BSPT konische UNI-ISO 7 mit Teflon.  
Metrische ISO/R 262.

## 🇫🇷 **Filetage**

BSPP cylindrique UNI-ISO228 (avec joint torique).  
BSPT conique UNI-ISO7 teflonée.  
Métrique ISO/R 262.

## 🇪🇸 **Roscado**

BSPP cilíndrico UNI-ISO 228 (con junta tórica).  
Teflón con recubrimiento BSPT UNI-ISO 7.  
ISO/R 262 métrica.

## 🇮🇹 **Filetti**

Filettature da M5 a 1"

## 🇬🇧 **Threads**

Threads from M5 to 1"

## 🇩🇪 **Gewinde**

Gewinde von M5 bis 1"

## 🇫🇷 **Filets**

Filetages de M5 à 1"

## 🇪🇸 **Roscas**

Roscas de M5 a 1"

## 🇮🇹 **Norma di riferimento**

## 🇫🇷 **Norme de référence**

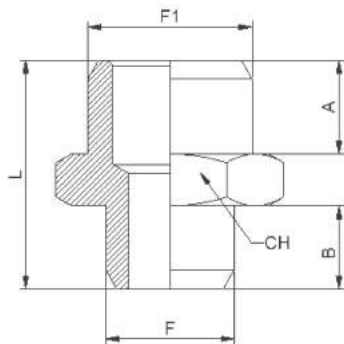
## 🇬🇧 **Reference standard**

## 🇪🇸 **Normativa de referencia**

## 🇩🇪 **Entspricht der Norm**



# AS 51



## 🇮🇹 **Nipplo cilindrico BSPP metrico**

🇬🇧 Nipple parallel BSPP-metric

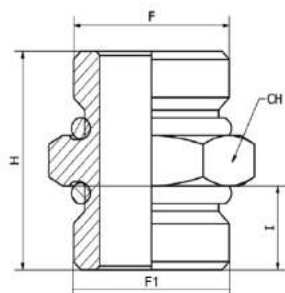
🇩🇪 Nippel zylindrisches-metrisches Gewinde






🇫🇷 Mamelon cylindrique BSPP- métrique

🇪🇸 Machón cilíndrico BSPP- métrico

CODICE/CODE	F"	F1"	A	B	L	CH	PEZZI/PIECES
<b>AS51M5M5</b>	M5	M5	4	4	11	8	10
<b>AS51M518</b>	M5	G1/8	6	5	15,5	14	10
<b>AS511818</b>	G1/8	G1/8	6	6	16,5	14	10
<b>AS511814</b>	G1/8	G1/4	8	6	18,5	17	10
<b>AS511838</b>	G1/8	G3/8	9	6	20	19	10
<b>AS511812</b>	G1/8	G1/2	12	6,5	25	22	10
<b>AS511414</b>	G1/4	G1/4	8	8	20,5	17	10
<b>AS511438</b>	G1/4	G3/8	9	8	22	19	10
<b>AS511412</b>	G1/4	G1/2	10	8	23	24	10
<b>AS513838</b>	G3/8	G3/8	9	9	23	19	10
<b>AS513812</b>	G3/8	G1/2	10	9	24	24	10
<b>AS513834</b>	G3/8	G3/4	11	9	25,5	30	10
<b>AS511212</b>	G1/2	G1/2	10	10	25,5	24	10
<b>AS511234</b>	G1/2	G3/4	11	10	26,5	30	10
<b>AS511201</b>	G1/2	G1	10	13	29	36	10
<b>AS513434</b>	G3/4	G3/4	11	11	27,5	30	10
<b>AS513401</b>	G3/4	G1	13	11	30	36	10
<b>AS510101</b>	G1	G1	13	13	32	36	10

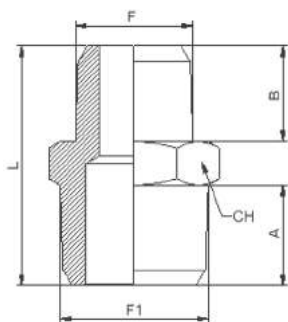
## AS 51OR








-  **Nipplo cilindrico BSPP con O-ring**
-  Nipple parallel BSPP with O-ring
-  Nippel zylindrisches Gewinde mit O-ring
-  Mamelon cylindrique BSPP, o-ring
-  Machón cilíndrico BSPP con o-ring

CODICE/CODE	F"	F1"	I	I1	H	CH	PEZZI/PIECES
<b>AS51OR18</b>	G1/8	G1/8	-	6,5	17,5	14	10
<b>AS51OR14</b>	G1/4	G1/4	-	8	21	17	10
<b>AS51OR38</b>	G3/8	G3/8	-	9	23	20	10
<b>AS51OR12</b>	G1/2	G1/2	-	10	26	24	10
<b>AS51OR1814</b>	G1/8	G1/4	6,5	8	19,5	17	10
<b>AS51OR1838</b>	G1/8	G3/8	6,5	9	21	20	10
<b>AS51OR1438</b>	G1/4	G3/8	8	9	22	20	10
<b>AS51OR1412</b>	G1/4	G1/2	8	10	24	24	10
<b>AS51OR3812</b>	G3/8	G1/2	9	10	25	24	10

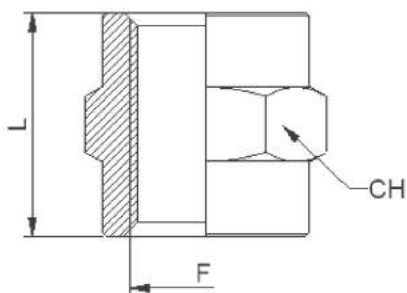
## AS 52K








-  **Nipplo conico BSPT**
-  Nipple taper BSPT
-  Nippel konisches Gewinde
-  Mamelon conique BSPT
-  Machón cónico BSPT

CODICE/CODE	F"	F1"	A	B	L	CH	PEZZI/PIECES
<b>AS52K1818</b>	R1/8	R1/8	8	8	20,5	12	10
<b>AS52K1814</b>	R1/8	R1/4	11	7,5	23	14	10
<b>AS52K1838</b>	R1/8	R3/8	11	7,5	23,5	17	10
<b>AS52K1414</b>	R1/4	R1/4	11	11	27	14	10
<b>AS52K1438</b>	R1/4	R3/8	11	10,5	26,5	17	10
<b>AS52K1412</b>	R1/4	R1/2	12,5	10,5	28,5	22	10
<b>AS52K3838</b>	R3/8	R3/8	11	11	27	17	10
<b>AS52K3812</b>	R3/8	R1/2	14	11,5	31	22	10
<b>AS52K1212</b>	R1/2	R1/2	13,5	13,5	33	22	10
<b>AS52K1234</b>	R1/2	R3/4	14	12,5	32,5	27	10
<b>AS52K3434</b>	R3/4	R3/4	14	14	34,5	27	10
<b>AS52K3401</b>	R3/4	R1	15,5	13	35,5	34	10
<b>AS52K0101</b>	R1	R1	15,5	15,5	37	34	10

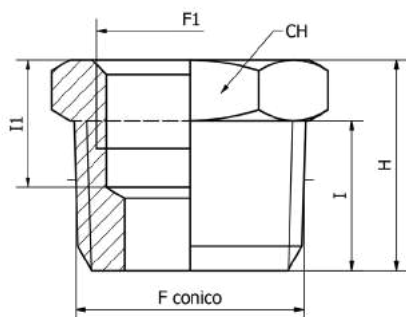
## AS 53



-  **Manicotto cilindrico BSPP - metrico**
-  Sleeve parallel BSPP - metric
-  Muffe zylindrisches-konisches Gewinde
-  Manchon cylindrique BSPP- métrique
-  Manguito cilíndrico BSPP- métrico

CODICE/CODE	F"	L	CH	PEZZI/PIECES
<b>AS53M5M5</b>	M5	11	8	10
<b>AS531818</b>	G1/8	15	14	10
<b>AS531414</b>	G1/4	22	17	10
<b>AS533838</b>	G3/8	23	22	10
<b>AS531212</b>	G1/2	28,5	26	10
<b>AS533434</b>	G3/4	32	32	10
<b>AS530101</b>	G1	31	38	10

## AS 54K



**Riduzione femmina cilindrico - maschio conico BSPT**

Reducer female cylindrical - male taper BSPT

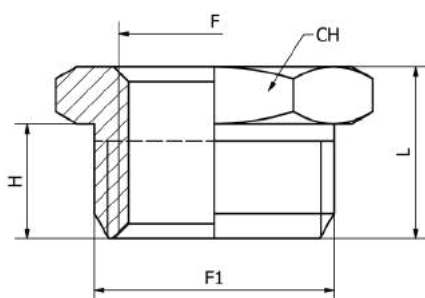
Reduzierung konisches Gewinde

Réduction, femelle cylindrique - mâle conique BSPT

Reducción hembra cilíndrica - macho cónico BSPT

CODICE/CODE	F"	F1"	I	I1	H	CH	PEZZI/PIECES
<b>AS54K1418</b>	R1/4	G1/8	11	9,5	15,5	14	10
<b>AS54K3818</b>	R3/8	G1/8	11	9	16	17	10
<b>AS54K3814</b>	R3/8	G1/4	11	11,5	16	17	10
<b>AS54K1218</b>	R1/2	G1/8	12,5	10	18	22	10
<b>AS54K1214</b>	R1/2	G1/4	12,5	11,5	18	22	10
<b>AS54K1238</b>	R1/2	G3/8	12,5	11,5	18	22	10
<b>AS54K3438</b>	R3/4	G3/8	14	12	20	27	10
<b>AS54K3412</b>	R3/4	G1/2	14	14	20	27	10
<b>AS54K0138</b>	R1	G3/8	15,5	13	21,5	34	10
<b>AS54K0112</b>	R1	G1/2	15,5	14	21,5	34	10
<b>AS54K0134</b>	R1	G3/4	15,5	14	21,5	34	10

## AS 54



**Riduzione maschio-femmina cilindrica BSPP-metrico**

Reducer male-female parallel BSPP-metric

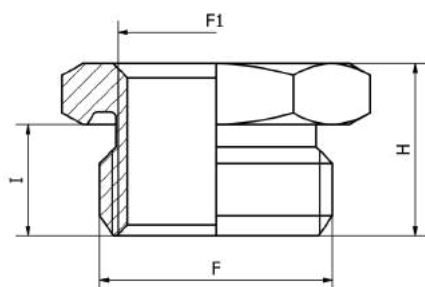
Reduzierung zylindrisches Gewinde

Réduction, mâle-femelle cylindrique BSPP- métrique

Reducción macho-hembra cilíndrica BSPP- métrico

CODICE/CODE	F1"	F"	H	L	CH	PEZZI/PIECES
<b>AS5418M5</b>	G1/8	M5	6,5	10,5	14	10
<b>AS541418</b>	G1/4	G1/8	8	12,5	17	10
<b>AS543818</b>	G3/8	G1/8	9	14	19	10
<b>AS543814</b>	G3/8	G1/4	9	14	19	10
<b>AS541218</b>	G1/2	G1/8	10	15	24	10
<b>AS541214</b>	G1/2	G1/4	10	15	24	10
<b>AS541238</b>	G1/2	G3/8	10	15	24	10
<b>AS543414</b>	G3/4	G1/4	11	16,5	30	10
<b>AS543438</b>	G3/4	G3/8	11	16,5	30	10
<b>AS543412</b>	G3/4	G1/2	13,5	19,5	30	10
<b>AS540138</b>	G1	G3/8	13,5	19,5	36	10
<b>AS540112</b>	G1	G1/2	13	19	36	10
<b>AS540134</b>	G1	G3/4	13	19	36	10

## AS 54OR



**Riduzione maschio-femmina cilindrica BSPP-metrico con O-ring**

Reducer male-female parallel BSPP metric with O-ring

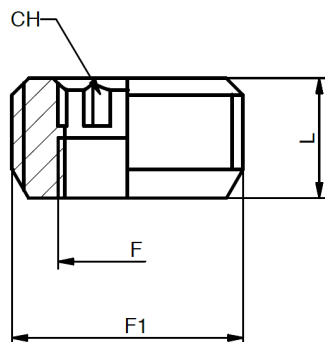
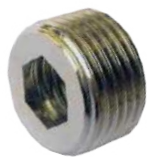
Reduzierung zylindrisches Gewinde mit O-ring

Réduction, mâle-femelle cylindrique BSPP- métrique avec o-ring

Reducción macho-hembra cilíndrica BSPP- métrico con o-ring

CODICE/CODE	F"	F1"	I	H	CH	PEZZI/PIECES
<b>AS54OR18M5</b>	G1/8	M5	6,5	11	14	10
<b>AS54OR1418</b>	G1/4	G1/8	8	13	19	10
<b>AS54OR3818</b>	G3/8	G1/8	9	14	20	10
<b>AS54OR3814</b>	G3/8	G1/4	9	14	20	10
<b>AS54OR1218</b>	G1/2	G1/8	10	15,5	24	10
<b>AS54OR1214</b>	G1/2	G1/4	10	15,5	24	10
<b>AS54OR1238</b>	G1/2	G3/8	10	15,5	26	10

## AS 54S



**IT** Riduzione a scomparsa a brugola cilindrica BSPP-metrico

**UK** Hexagonal hidden reducer parallel BSPP-metric

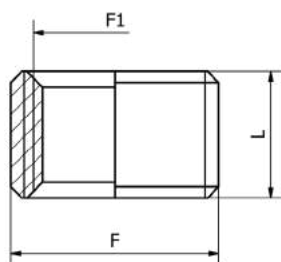
**DE** Reduzierung zylindrisches Gewinde

**FR** Réduction, cylindrique, hexagonal BSPP- métrique

**ES** Reducción cilíndrica, hexagonal BSPP- métrico

CODICE/CODE	F"	F1"	L	CH	PEZZI/PIECES
AS54S18M5	M5	G1/8	8	3	10
AS54S1418	G1/8	G1/4	9	6	10
AS54S3818	G1/8	G3/8	9	6	10
AS54S3814	G1/4	G3/8	9	8	10
AS54S1214	G1/4	G1/2	10,5	10	10
AS54S1238	G3/8	G1/2	10,5	10	10
AS54S3412	G1/2	G3/4	13	12	10
AS54S0134	G3/4	G1	15	17	10

## AS 54P



**IT** Riduzione a scomparsa passante cilindrica BSPP

**UK** Hidden reducer parallel BSPP

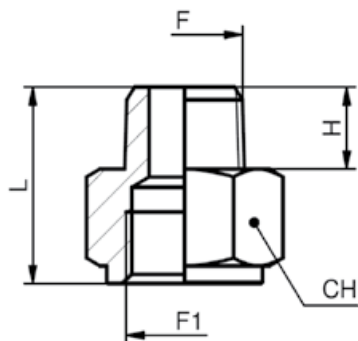
**DE** Reduzierung zylindrisches Gewinde

**FR** Réduction, cylindrique BSPP

**ES** Reducción cilíndrica BSPP

CODICE/CODE	F"	F1"	L	PEZZI/PIECES
AS54P1418	G1/4	G1/8	8	10
AS54P3814	G3/8	G1/4	9	10
AS54P1238	G1/2	G3/8	9,5	10
AS54P3412	G3/4	G1/2	10	10
AS54P0134	G1	G3/4	12	10

## AS 55K



**IT** Maggiorazione femmina cilindrico - maschio conico BSPT

**UK** Extension female cylindrical - male taper BSPT

**DE** Verlängerung konisches Gewinde

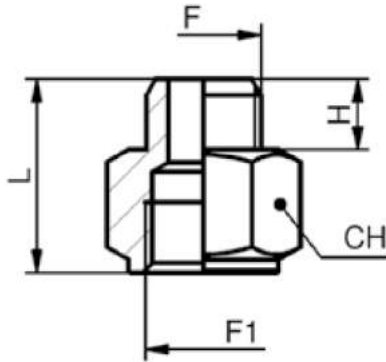
**FR** Augmentation femelle cylindrique - mâle conique BSPT

**ES** Alargue hembra cilíndrica - macho cónico BSPT

CODICE/CODE	F"	F1"	H	L	CH	PEZZI/PIECES
AS55K1818	R1/8	G1/8	8	18	14	10
AS55K1814	R1/8	G1/4	7,5	21	17	10
AS55K1838	R1/8	G3/8	7,5	21,5	22	10
AS55K1414	R1/4	G1/4	11	24,5	17	10
AS55K1438	R1/4	G3/8	10,5	24,5	22	10
AS55K1412	R1/4	G1/2	10,5	27,5	27	10
AS55K3838	R3/8	G3/8	10,5	24,5	22	10
AS55K3812	R3/8	G1/2	11,5	29,5	24	10
AS55K3834	R3/8	G3/4	11	28	32	10
AS55K1212	R1/2	G1/2	12,5	28,5	27	10
AS55K1234	R1/2	G3/4	14	35	32	10
AS55K1201	R1/2	G1	13	31	38	10
AS55K3434	R3/4	G3/4	13	30	32	10
AS55K3401	R3/4	G1	13	31	38	10
AS55K0101	R1	G1	15,5	33,5	38	10



## AS 55



**Maggiorazione maschio-femmina cilindrica BSPP-metrico**

Extension male-female parallel BSPP-metric

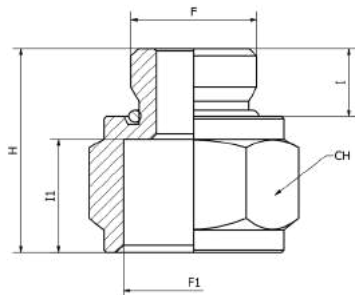
Verlängerung zylindrisches Gewinde

Augmentation mâle-femelle cylindrique BSPP- métrique

Alargue macho-hembra cilíndrica BSPP- métrico

CODICE/CODE	F"	F1"	H	L	CH	PEZZI/PIECES
AS55M518	M5	G1/8	5	16	14	10
AS551818	G1/8	G1/8	6	16,5	14	10
AS551814	G1/8	G1/4	6	20	17	10
AS551838	G1/8	G3/8	6,5	20,5	22	10
AS551812	G1/8	G1/2	6,5	23,7	25	10
AS551414	G1/4	G1/4	8	22	17	10
AS551438	G1/4	G3/8	8	22	22	10
AS551412	G1/4	G1/2	9	26	24	10
AS553838	G3/8	G3/8	9	23	22	10
AS553812	G3/8	G1/2	9	26	27	10
AS553834	G3/8	G3/4	9	26	32	10
AS551212	G1/2	G1/2	10	26	27	10
AS551234	G1/2	G3/4	10,5	27,5	32	10
AS551201	G1/2	G1	11	29	38	10
AS553434	G3/4	G3/4	11	27	32	10
AS553401	G3/4	G1	11	29	38	10
AS550101	G1	G1	13	31	38	10

## AS 55OR



**Maggiorazione maschio-femmina cilindrica BSPP con O-ring**

Extension male-female parallel BSPP with O-ring

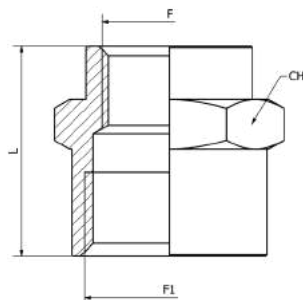
Verlängerung zylindrisches Gewinde mit O-ring

Augmentation mâle-femelle cylindrique BSPP avec o-ring

Alargue macho-hembra cilíndrica BSPP con o-ring

CODICE/CODE	F"	F1"	I	I1	H	CH	PEZZI/PIECES
AS55OR1818	G1/8	G1/8	6,5	8,5	17	14	10
AS55OR1814	G1/8	G1/4	6,5	11	20	17	10
AS55OR1838	G1/8	G3/8	6,5	11,5	21	22	10
AS55OR1414	G1/4	G1/4	8	11	21,5	17	10
AS55OR1438	G1/4	G3/8	8	11,5	22,5	22	10
AS55OR1412	G1/4	G1/2	9	14	26	24	10
AS55OR3838	G3/8	G3/8	9	11,5	23,5	22	10
AS55OR3812	G3/8	G1/2	9	14	27	24	10

## AS 56



**Manicotto ridotto cilindrico BSPP-metrico**

Reducing sleeve parallel BSPP-metric

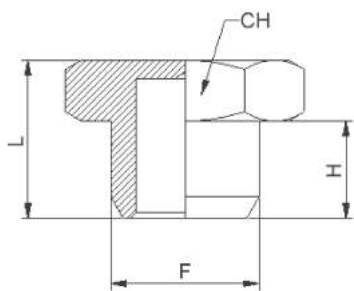
Muffe Reduziert

Manchon inégal cylindrique, BSPP-métrique

Manguito de reducción cilíndrico, BSPP-métrico

CODICE/CODE	F"	F1"	L	CH	PEZZI/PIECES
AS56M518	M5	G1/8	13,5	14	10
AS561814	G1/8	G1/4	18,5	17	10
AS561838	G1/8	G3/8	20	22	10
AS561812	G1/8	G1/2	24	24	10
AS561438	G1/4	G3/8	23	22	10
AS561412	G1/4	G1/2	26	24	10
AS563812	G3/8	G1/2	26	24	10
AS563834	G3/8	G3/4	25	32	10
AS563412	G1/2	G3/4	25	32	10
AS560112	G1/2	G1	25	38	10
AS560134	G3/4	G1	25	38	10

## AS 57



**Tappo esagonale (senza O-ring) cilindrico BSPP-metrico**

Hexagonal male plug (without O-ring) parallel BSPP-metric

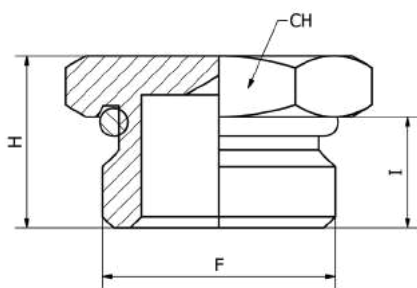
Stopfen zylindrisches-metrisches Gewinde ohne O-ring

Bouchon à 6 pans mâle, cylindrique, BSPP-métrique

Tapón macho cilíndrico, BSPP-métrico

CODICE/CODE	F"	H	L	CH	PEZZI/PIECES
AS5700M5	M5	4	7	8	10
AS570018	G1/8	6,5	10,5	14	10
AS570014	G1/4	8	12,5	17	10
AS570038	G3/8	9	13,5	19	10
AS570012	G1/2	10	15	24	10
AS570034	G3/4	11	16,5	30	10
AS570001	G1	12,5	18,5	38	10

## AS 57OR-E



**Tappo esagonale cilindrico BSPP con O-ring**

Hexagonal male plug parallel BSPP with O-ring

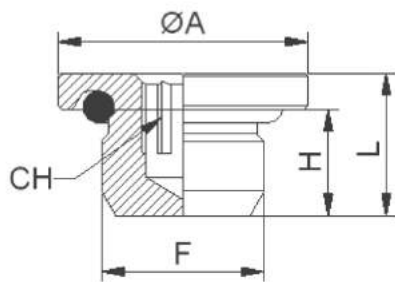
Stopfen zylindrisches Gewinde mit O-ring

Bouchon à 6 pans mâle, cylindrique, BSPP-métrique, avec o-ring

Tapón macho cilíndrico, BSPP-métrico, con o-ring

CODICE/CODE	F"	I	H	CH	PEZZI/PIECES
AS57OR18E	G1/8	6,5	10,5	14	10
AS57OR14E	G1/4	8	12,5	17	10
AS57OR38E	G3/8	9	13,5	20	10
AS57OR12E	G1/2	10	15,5	24	10

## AS 57OR



**Tappo con O-ring, esagono interno, cilindrico BSPP-metrico**

Male plug with O-ring, hexagonal inside, parallel BSPP-metric

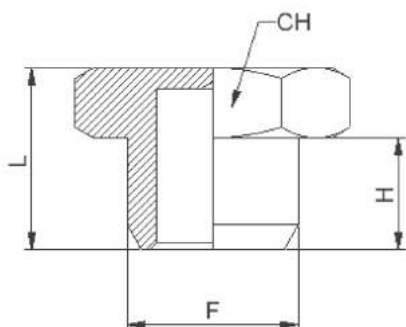
Stopfen zylindrisches-metrisches Gewinde mit O-Ring

Bouchon à 6 pans creux, cylindrique, BSPP-métrique

Tapón macho cilíndrico hexágono interior, BSPP-métrico

CODICE/CODE	F"	H	L	ØA	CH	PEZZI/PIECES
AS57ORM5	M5	4	6,5	8	2,5	10
AS57OR18	G1/8	5,5	8,5	14	5	10
AS57OR14	G1/4	8	11,5	17	6	10
AS57OR38	G3/8	9	12,5	20	8	10
AS57OR12	G1/2	10	14	26	10	10

## AS 57K



**Tappo esagonale conico BSPT**

Hexagonal male plug taper BSPT

Stopfen konisches Gewinde

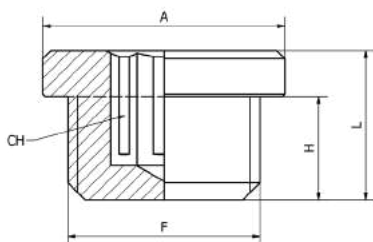
Bouchon à 6 pans mâle, conique BSPT

Tapón macho cónico BSPT

CODICE/CODE	F"	H	L	CH	PEZZI/PIECES
AS57K0018	R1/8	7,5	11,5	10	10
AS57K0014	R1/4	11	15,5	14	10
AS57K0038	R3/8	11	16	17	10
AS57K0012	R1/2	12	17,5	22	10
AS57K0034	R3/4	15	21	27	10
AS57K0001	R1	15,5	22	34	10



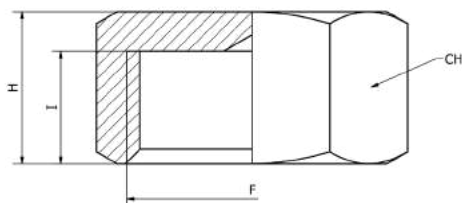
## AS 57B



- Tappo senza O-ring, esagono interno, cilindrico BSPP-metrico**
- Male plug without O-ring, hexagonal inside, parallel BSPP-metric
- Stopfen zylindrisches-metrisches Gewinde ohne O-Ring
- Bouchon à 6 pans creux, cylindrique BSPP-métrique
- Tapón macho cilíndrico hexágono interior BSPP-métrico

CODICE/CODE	F	L	H	A	CH	PEZZI/PIECES
AS57B00M5	M5	6,5	4	8	2,5	10
AS57B0018	1/8	9,5	6	15	5	10
AS57B0014	1/4	11,5	8	18	6	10
AS57B0038	3/8	13	9	21	8	10
AS57B0012	1/2	14,5	10	25	10	10
AS57B0034	3/4	15,5	11	31	14	10
AS57B0001	1"	19	13	38	17	5

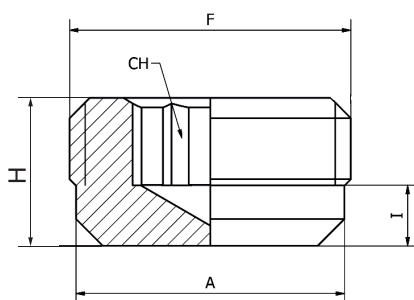
## AS 58



- Tappo femmina cilindrico BSPP-metrico**
- Female plug parallel BSPP-metric
- Stopfen zylindrisches-metrisches Gewinde
- Bouchon femelle cylindrique BSPP-métrique
- Tapón hembra cilíndrico BSPP-métrico

CODICE/CODE	F"	L	H	CH	PEZZI/PIECES
AS5800M5	M5	5,5	7	8	10
AS580018	G1/8	9	11	14	10
AS580014	G1/4	11	13	17	10
AS580038	G3/8	11	13,5	21	10
AS580012	G1/2	11	13,5	24	10
AS580034	G3/4	12,5	15	30	10
AS580001	G1	12,5	15	38	10

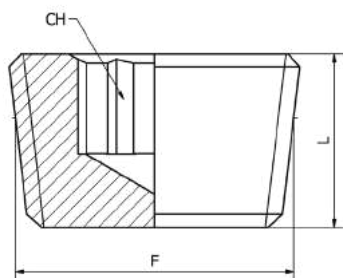
## AS 79



- Tappo a scomparsa cilindrico BSPP**
- Hidden plug-parallel BSPP
- Stopfen zylindrisches Gewinde
- Bouchon, cylindrique BSPP
- Tapón macho cilíndrico BSPP

CODICE/CODE	F"	A	L	H	CH	PEZZI/PIECES
AS790018	G1/8	7,5	2	8	5	10
AS790014	G1/4	10	3	10	6	10
AS790038	G3/8	10	3,5	12	8	10
AS790012	G1/2	11	4	14	10	10

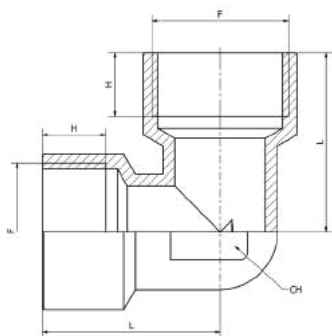
## AS 79K



- Tappo a scomparsa conico BSPT**
- Hidden plug-taper BSPT
- Stopfen konisches Gewinde
- Bouchon, conique BSPT
- Tapón macho cónico BSPT

CODICE/CODE	F"	L	CH	PEZZI/PIECES
AS79K0018	R1/8	7,5	5	10
AS79K0014	R1/4	10	6	10
AS79K0038	R3/8	10,5	8	10
AS79K0012	R1/2	13	10	10
AS79K0034	R3/4	15,5	14	10
AS79K0001	R1	17,5	17	10

## AS 59

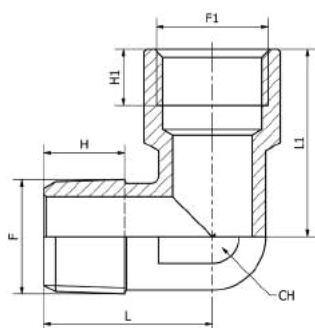


### Gomito femmina cilindrico BSPP

- Elbow female parallel BSPP
- Winkelstück zylindrisches Gewinde
- Equerre femelle cylindrique
- Racor a L hembra cilíndrico

CODICE/CODE	F"	H	L	CH	PEZZI/PIECES
<b>AS5900M5</b>	M5	4	11	9	10
<b>AS590018</b>	G1/8	8	21	10	10
<b>AS590014</b>	G1/4	11,5	25,5	13	10
<b>AS590038</b>	G3/8	11,5	28	17	10
<b>AS590012</b>	G1/2	14	33,5	21	10
<b>AS590034</b>	G3/4	16,5	36,5	25	10
<b>AS590001</b>	G1	19	45	30	10

## AS 60K

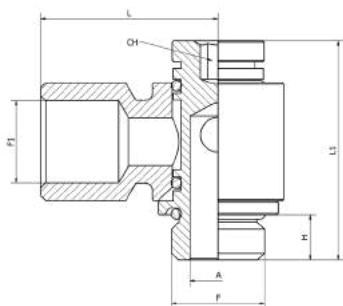


### Gomito maschio conico BSPT femmina cilindrico BSPP-metrico

- Elbow male taper BSPT female parallel BSPP-metric
- Winkelstück zylindrisches-konisches (metrisches) Gewinde
- Equerre mâle conique - femelle cylindrique BSPP-métrique
- Racor a L macho cónico - hembra cilíndrico BSPP-métrico

CODICE/CODE	F"	F1"	H	H1	L	L1	CH	PEZZI/PIECES
<b>AS6000M5</b>	M5	M5	4	5	11,5	11	9	10
<b>AS60K0018</b>	R1/8	G1/8	8	6	18,5	21	10	10
<b>AS60K0014</b>	R1/4	G1/4	11	8	24	26	13	10
<b>AS60K0038</b>	R3/8	G3/8	12	10	26,5	29	17	10
<b>AS60K0012</b>	R1/2	G1/2	14	14	31	33,5	21	10
<b>AS60K0034</b>	R3/4	G3/4	16	16,5	33	36,5	25	10
<b>AS60K0001</b>	R1	G1	17	19	39	45	30	10

## AS 60

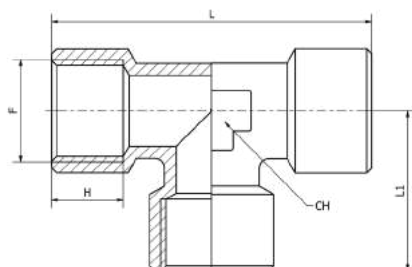


### Banjo singolo femmina girevole cilindrico BSPP

- Single banjo female rotating body parallel BSPP
- L Verschraubung drehbar zylindrisches Gewinde
- Raccord banjo femelle orientable cylindrique BSPP
- Racor banjo hembra orientable cilíndrico con tórica BSPP

CODICE/CODE	F"	F1"	H	ØA	L	L1	CHi	PEZZI/PIECES
<b>AS601414</b>	G1/4	G1/4	6,5	7,8	25	31,5	4	10

## AS 61

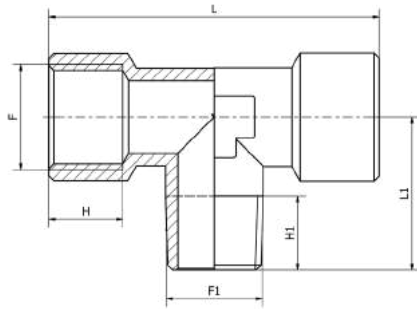


### T femmina cilindrico BSPP

- T female parallel BSPP
- T Stück zylindrisches Gewinde
- Té égal femelle cylindrique BSPP
- Racor a T hembra cilíndrico BSPP

CODICE/CODE	F"	H	L	L1	CH	PEZZI/PIECES
<b>AS6100M5</b>	M5	5	22	11	9	10
<b>AS610018</b>	G1/8	8	42	21	10	10
<b>AS610014</b>	G1/4	11	51	25,5	13	10
<b>AS610038</b>	G3/8	11,5	56	28	17	10
<b>AS610012</b>	G1/2	14	67	33,5	21	10
<b>AS610034</b>	G3/4	16,5	73	36,5	25	10
<b>AS610001</b>	G1	19	90	45	30	10

## AS 62K



**T centrale conico BSPT-metrico**

T central male taper BSPT-metric

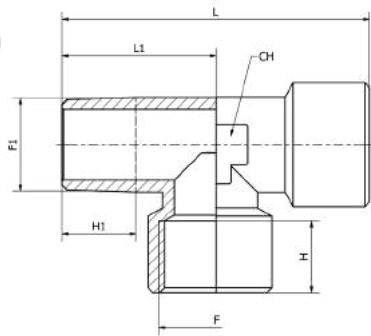
T Stück konisches-metrisches Gewinde

Té égal femelle, centre mâle conique, métrique

Racor a T macho central cónico, métrico

CODICE/CODE	F"	F1"	H	H1	L	L1	CH	PEZZI/PIECES
<b>AS6200M5</b>	M5	M5	5	4	22	11,5	9	10
<b>AS62K0018</b>	G1/8	R1/8	8	8	42	18,5	10	10
<b>AS62K0014</b>	G1/4	R1/4	8	11	51	23,5	13	10
<b>AS62K0038</b>	G3/8	R3/8	11,5	11,5	56	26	17	10
<b>AS62K0012</b>	G1/2	R1/2	14	14	67	31	21	10
<b>AS62K0034</b>	G3/4	R3/4	16,5	16	73	33	25	10
<b>AS62K0001</b>	G1	R1	19	17,5	90	39	30	10

## AS 63K



**T laterale conico BSPT-metrico**

Lateral T male taper BSPT-metric

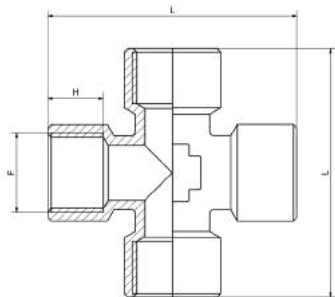
T Stück konisches-metrisches Gewinde

Té égal femelle, en bout mâle, conique, métrique

Racor a T macho lateral cónico, métrico

CODICE/CODE	F"	F1"	H	H1	L	L1	CH	PEZZI/PIECES
<b>AS6300M5</b>	M5	M5	5	4	22,5	12	9	10
<b>AS63K0018</b>	G1/8	R1/8	8	8	39,5	18,5	10	10
<b>AS63K0014</b>	G1/4	R1/4	8	11,5	50	24	13	10
<b>AS63K0038</b>	G3/8	R3/8	8,5	11,5	54	26,5	17	10
<b>AS63K0012</b>	G1/2	R1/2	14	14	64,5	31	21	10
<b>AS63K0034</b>	G3/4	R3/4	16,5	16	69,5	33	25	10
<b>AS63K0001</b>	G1	R1	19	17,5	84	39	30	10

## AS 64



**Croce femmina cilindrico BSPP**

Female cross parallel BSPP

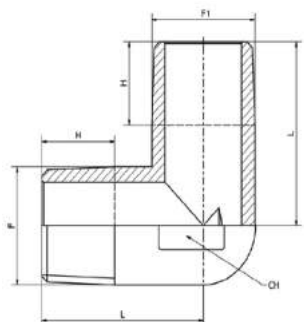
Kreuzstück konisches-metrisches Gewinde

Croix égale femelle cylindrique BSPP

Racor a cruz hembra cilindrico BSPP

CODICE/CODE	F"	H	L	CH	PEZZI/PIECES
<b>AS640018</b>	G1/8	8	42	10	10
<b>AS640014</b>	G1/4	11	51	13	10
<b>AS640038</b>	G3/8	11,5	56	17	10
<b>AS640012</b>	G1/2	14	67	21	10

## AS 65K



**Gomito maschio conico BSPT-metrico**

Elbow male taper BSPT-metric

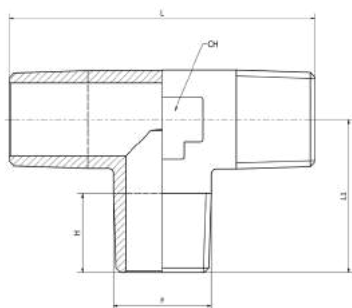
Winkelstück konisches-metrisches Gewinde

Equerre mâle, conique BSPT- métrique

Racor a L macho cónico BSPT- métrico

CODICE/CODE	F"	F1"	H	H1	L	L1	CH	PEZZI/PIECES
<b>AS6500M5</b>	M5	M5	4	4	11,5	11,5	9	10
<b>AS65K0018</b>	R1/8	R1/8	8	8	18,5	18,5	10	10
<b>AS65K1418</b>	R1/4	R1/8	11	8	21,5	18,5	10	10
<b>AS65K0014</b>	R1/4	R1/4	11,5	11,5	24	24	13	10
<b>AS65K0038</b>	R3/8	R3/8	11,5	11,5	26	26	17	10
<b>AS65K0012</b>	R1/2	R1/2	14	14	31	31	21	10
<b>AS65K0034</b>	R3/4	R3/4	16	16	33	33	25	10
<b>AS65K0001</b>	R1	R1	17	17	39	39	30	10

## AS 66K



### 🇮🇹 T maschio conico BSPT-metrico

🇬🇧 T male taper BSPT-metric

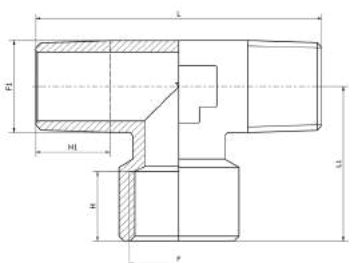
🇩🇪 T Stück konisches-metrisches Gewinde

🇫🇷 Té à piquage latéral, mâle, conique BSPT- métrique

🇪🇸 Racor a T orientable macho lateral cónico BSPT- métrico

CODICE/CODE	F"	H	L	L1	CH	PEZZI/PIECES
<b>AS6600M5</b>	M5	5	27,5	13,5	8	10
<b>AS66K0018</b>	R1/8	10,5	38	19	10	10
<b>AS66K0014</b>	R1/4	11	47	23,5	13	10
<b>AS66K0038</b>	R3/8	11,5	52	26	17	10
<b>AS66K0012</b>	R1/2	14	62	31	21	10
<b>AS66K0034</b>	R3/4	16	66,4	33	25	10
<b>AS66K0001</b>	R1	17,5	78	39	30	10

## AS 67K



### 🇮🇹 T femmina doppio laterale conico BSPT-metrico

🇬🇧 Double lateral female T taper BSPT-metric

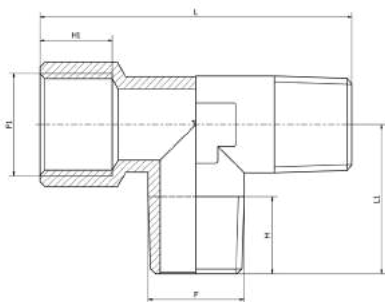
🇩🇪 T Stück Innengewinde konisches-metrisches Gewinde

🇫🇷 Té égal femelle double, conique BSPT- métrique

🇪🇸 Racor a T hembra doble, cónico BSPT- métrico

CODICE/CODE	F"	F1"	H	H1	L	L1	CH	PEZZI/PIECES
<b>AS6700M5</b>	M5	M5	5,5	5	27,5	13	8	10
<b>AS67K0018</b>	G1/8	R1/8	8	8	37	21	10	10
<b>AS67K0014</b>	G1/4	R1/4	11	11	47	25,5	13	10
<b>AS67K0038</b>	G3/8	R3/8	11,5	11,5	52	28	17	10
<b>AS67K0012</b>	G1/2	R1/2	15	14	62	33,5	21	10
<b>AS67K0034</b>	G3/4	R3/4	16,5	16	66,4	36,5	25	10
<b>AS67K0001</b>	G1	R1	19	17,5	78	45	30	10

## AS 68K



### 🇮🇹 T femmina laterale-centrale conico BSPT-metrico

🇬🇧 Lateral-central female T taper BSPT-metric

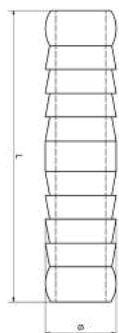
🇩🇪 T Stück konisches-metrisches Gewinde

🇫🇷 Té égal femelle latéral-centre, conique BSPT- métrique

🇪🇸 Racor a T hembra lateral-central, cónico BSPT- métrico

CODICE/CODE	F"	F1"	H	H1	L	L1	CH	PEZZI/PIECES
<b>AS6800M5</b>	M5	M5	5	5,5	26	12	8	10
<b>AS68K0018</b>	R1/8	G1/8	8	8	39,5	18,5	10	10
<b>AS68K0014</b>	R1/4	G1/4	11,5	7,5	49	25	13	10
<b>AS68K0038</b>	R3/8	G3/8	11,5	11,5	54	26	17	10
<b>AS68K0012</b>	R1/2	G1/2	14	14	64,5	31	21	10
<b>AS68K0034</b>	R3/4	G3/4	16	16,5	69,5	33	25	10
<b>AS68K0001</b>	R1	G1	17,5	19	84	39	30	10

## AS 69D



### 🇮🇹 Portagomma a resca doppio

🇬🇧 Double hose adapter

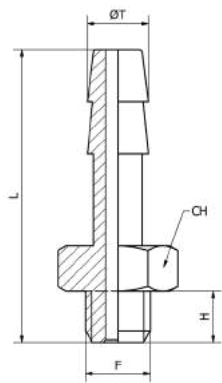
🇩🇪 Schlauchtülle

🇫🇷 Embout à douille annelée pour tube, double

🇪🇸 Adaptador espiga, doble

CODICE/CODE	L	Ø	PEZZI/PIECES
<b>AS69D0006</b>	36	6	10
<b>AS69D0008</b>	44,5	8	10
<b>AS69D0010</b>	44,5	10	10

## AS 69



**Portagomma maschio cilindrico BSPP-metrico**

Hose male adapter parallel BSPP-metric

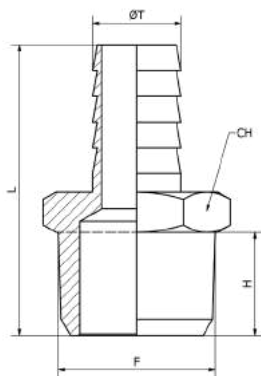
Schlauchtülle zylindrisches-metrisches Gewinde

Douille annelée, cylindrique BSPP-métrique

Espiga macho, cilíndrica BSPP-métrico

CODICE/CODE	ØT	F"	H	L	CH	PEZZI/PIECES
AS69M504	4,5	M5	4	22,5	8	10
AS691806	6	G1/8	6	29,5	12	10
AS691406	6	G1/4	7	32	14	10
AS691807	7	G1/8	6	30,5	12	10
AS691407	7	G1/4	8	33	14	10
AS691808	8	G1/8	6	30,5	12	10
AS691408	8	G1/4	8	33	14	10
AS693808	8	G3/8	9	33	19	10
AS691809	9	G1/8	6	30,5	12	10
AS691409	9	G1/4	8	32	14	10
AS693809	9	G3/8	9	34	19	10
AS691810	10	G1/8	6	30,5	12	10
AS691410	10	G1/4	8	33	14	10
AS693810	10	G3/8	9	34	19	10
AS691412	12	G1/4	8	33	14	10
AS693812	12	G3/8	9	34	19	10
AS691212	12	G1/2	10	35,5	22	10
AS693814	14	G3/8	9	34	19	10
AS691214	14	G1/2	10	35,5	22	10
AS693817	17	G3/8	9	37	19	10
AS691217	17	G1/2	10	35,5	22	10
AS693418	18	G3/4	11	41,5	30	10
AS691220	20	G1/2	10	35,5	22	10
AS693420	20	G3/4	11	41,5	30	10

## AS 69K



**Portagomma maschio conico BSPT**

Hose male adapter taper BSPT

Schlauchtülle konisches Gewinde

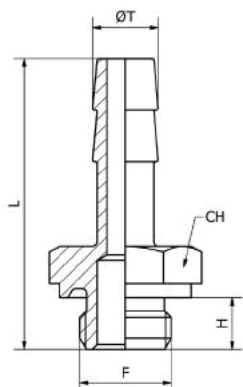
Douille annelée droit, conique BSPT






Espiga recta macho cónica BSPT

CODICE/CODE	ØT	F"	H	L	CH	PEZZI/PIECES
AS69K1806	6	R1/8	8	31,5	12	10
AS69K1406	6	R1/4	11	35	14	10
AS69K1807	7	R1/8	8	31,5	12	10
AS69K1407	7	R1/4	11	35	14	10
AS69K1808	8	R1/8	8	31,5	12	10
AS69K1408	8	R1/4	11	35	14	10
AS69K1809	9	R1/8	8	31,5	12	10
AS69K1409	9	R1/4	11	35	14	10
AS69K3809	9	R3/8	11,5	35,5	17	10
AS69K1209	9	R1/2	14	38,5	22	10
AS69K1810	10	R1/8	8	32,5	12	10
AS69K1410	10	R1/4	11	36	14	10
AS69K3810	10	R3/8	11,5	36,5	17	10
AS69K1210	10	R1/2	14	39,5	22	10
AS69K1412	12	R1/4	11	36	14	10
AS69K3812	12	R3/8	11,5	36,5	17	10
AS69K1212	12	R1/2	14	39,5	22	10
AS69K3814	14	R3/8	11,5	38,5	17	10
AS69K1214	14	R1/2	14	41,5	22	10
AS69K3816	16	R3/8	11,5	38,5	17	10
AS69K1216	16	R1/2	14	41,5	22	10
AS69K3416	16	R3/4	16,5	45	27	10
AS69K3817	17	R3/8	11,5	40,5	18	10
AS69K1217	17	R1/2	14	43,5	22	10
AS69K3818	18	R3/8	11,5	40,5	19	10
AS69K1218	18	R1/2	14	43,5	22	10
AS69K3418	18	R3/4	16,5	47	27	10
AS69K3820	20	R3/8	11,5	41	22	10
AS69K1220	20	R1/2	14	43,5	22	10
AS69K3420	20	R3/4	16	46,5	27	10
AS69K3425	25	R3/4	16,5	53	27	10
AS69K0125	25	R 1	19	56	34	10



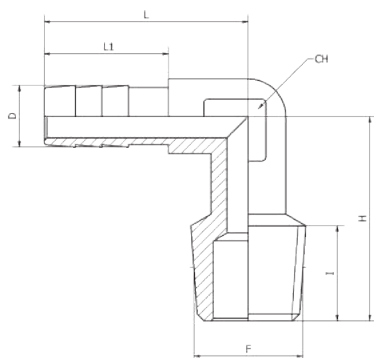
## AS 69OR








-  **Portagomma maschio con O-ring cilindrico BSPP-metrico**
-  Hose male adapter with O-ring parallel BSPP-metric
-  Schlauchtülle zylindrisches Gewinde mit O-Ring
-  Douille annelée, cylindrique BSPP-métrique avec o-ring
-  Espiga macho, cilíndrica BSPP-métrico con o-ring

CODICE/CODE	ØT	F"	H	L	CH	PEZZI/PIECES
<b>AS69ORM545</b>	4,5	M5	4,5	23	8	10
<b>AS69OR1806</b>	6	G1/8	6,5	30	14	10
<b>AS69OR1406</b>	6	G1/4	8	32	17	10
<b>AS69OR3806</b>	6	G3/8	9	33	20	10
<b>AS69OR1807</b>	7	G1/8	6,5	30	14	10
<b>AS69OR1407</b>	7	G1/4	8	32	17	10
<b>AS69OR1808</b>	8	G1/8	6,5	30	14	10
<b>AS69OR1408</b>	8	G1/4	8	32	17	10
<b>AS69OR3808</b>	8	G3/8	9	33	20	10
<b>AS69OR1809</b>	9	G1/8	6,5	30	14	10
<b>AS69OR1409</b>	9	G1/4	8	32	17	10
<b>AS69OR3809</b>	9	G3/8	9	33	20	10
<b>AS69OR1810</b>	10	G1/8	6,5	30	14	10
<b>AS69OR1410</b>	10	G1/4	8	32	17	10
<b>AS69OR1412</b>	12	G1/4	8	33	17	10
<b>AS69OR3812</b>	12	G3/8	9	34	20	10
<b>AS69OR1212</b>	12	G1/2	10	35,5	24	10
<b>AS69OR3817</b>	17	G3/8	9	38	20	10
<b>AS69OR1217</b>	17	G1/2	10	39,5	24	10

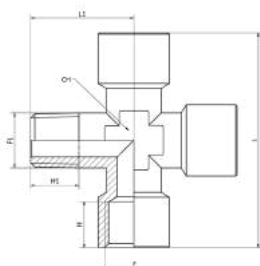
## AS 69KL








-  **Gomito 90° portagomma maschio conico BSPT**
-  Elbow 90° hose male adaptor taper
-  BSPT Winkelschlauchtülle 90° konisches Gewinde
-  Equerre mâle, conique BSPT
-  Racor a L macho cónico BSPT

CODICE/CODE	ØD	F"	I	H	L	L1	CH	PEZZI/PIECES
<b>AS69KL1806A</b>	6	R1/8	8	18,5	22,5	14	8	10
<b>AS69KL1806B</b>	6	R1/8	10	23	22,5	14	8	10
<b>AS69KL1406</b>	6	R1/4	11	23	23	14	9	10
<b>AS69KL1807A</b>	7	R1/8	8	18,5	22,5	14	8	10
<b>AS69KL1807B</b>	7	R1/8	10	23	22,5	14	8	10
<b>AS69KL1407</b>	7	R1/4	11	23	23	14	9	10

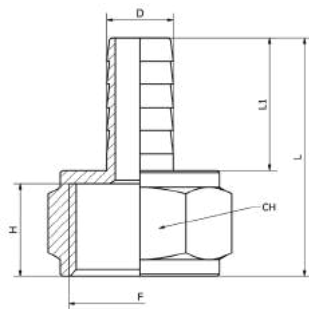
## AS 70K



-  **Croce 3 femmine 1 maschio conico BSPT**
-  Cross 3 female 1 male taper BSPT
-  Kreuzstück konisches Gewinde
-  Croix égale mâle/femelle, conique BSPT
-  Racor a cruz macho-hembra, cónica BSPT

CODICE/CODE	F"	F1"	H	H1	L	L1	CH	PEZZI/PIECES
<b>AS70K0018</b>	G1/8	R1/8	8	8	42	18,5	10	10
<b>AS70K0014</b>	G1/4	R1/4	11	11	51	23,5	13	10
<b>AS70K0038</b>	G3/8	R3/8	11,5	11,5	56	26	17	10
<b>AS70K0012</b>	G1/2	R1/2	14	14	67	31	21	10

## AS 72



### Portagomma femmina cilindrico BSPP

Hose female adapter parallel BSPP

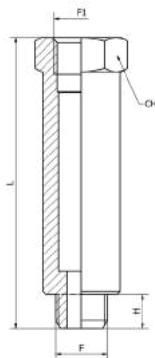
Schlauchtülle Innengewinde zylindrisches Gewinde

Douille annelée femelle cylindrique BSPP

Espiga hembra cilíndrico BSPP

CODICE/CODE	Ø D	F"	H	L	L1	CH	PEZZI/PIECES
AS721806	6	G1/8	8	28,5	19	12	10
AS721406	6	G1/4	11	31,5	19	15	10
AS721807	7	G1/8	8	28,5	19	12	10
AS721407	7	G1/4	11	31,5	19	15	10
AS721808	8	G1/8	8	28,5	19	12	10
AS721408	8	G1/4	11	31,5	19	15	10
AS723808	8	G3/8	10	34,5	19,5	19	10
AS721208	8	G1/2	10	32,5	19	24	10
AS721809	9	G1/8	8	28,5	19	12	10
AS721409	9	G1/4	11	31,5	19	15	10
AS723809	9	G3/8	11,5	32	19	19	10
AS721810	10	G1/8	8	29,5	20	12	10
AS721410	10	G1/4	11	32,5	20	15	10
AS723810	10	G3/8	11,5	33	20	19	10
AS721210	10	G1/2	14	36	20	24	10
AS721412	12	G1/4	11	32,5	20	15	10
AS723812	12	G3/8	11,5	33	20	19	10
AS721212	12	G1/2	14	36	20	24	10
AS723814	14	G3/8	11,5	35	22	19	10
AS721214	14	G1/2	14	38	22	24	10
AS723816	16	G3/8	11,5	35	22	19	10
AS721216	16	G1/2	14	38	22	24	10
AS723817	17	G3/8	11,5	37	24	19	10
AS721217	17	G1/2	14	40	24	24	10
AS721218	18	G1/2	14	40	24	24	10
AS721220	20	G1/2	14	40,5	23	24	10
AS723420	20	G3/4	15	41,5	24	29	10
AS723425	25	G3/4	15	47,5	30	29	10

## AS 73



### Prolunga cilindrico BSPP

Extension parallel BSPP

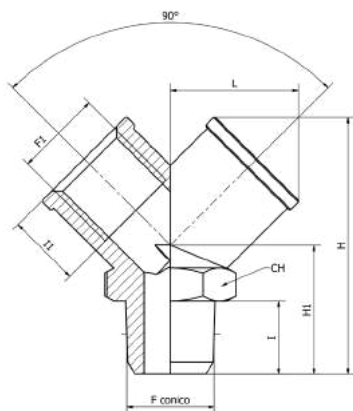
Verlängerung zylindrisches Gewinde

Rallonge égale, cylindrique BSPP

Prolongación cilíndrica BSPP

CODICE/CODE	F"	F1"	H	L	CH	PEZZI/PIECES
AS731822	G1/8	G1/8	6	22	14	10
AS731832	G1/8	G1/8	6	32	14	10
AS731842	G1/8	G1/8	6	42	14	10
AS731851	G1/8	G1/8	6	51	14	10
AS731428	G1/4	G1/4	8	28	17	10
AS731435	G1/4	G1/4	8	35	17	10
AS731451	G1/4	G1/4	8	51	17	10
AS733841	G3/8	G3/8	9	41	22	10
AS731236	G1/2	G1/2	10	36	24	10
AS733450	G3/4	G3/4	12	50	30	10
AS730150	G1	G1	12	50	38	10

## AS 75K



**Y maschio conico BSPT**

Y male taper BSPT

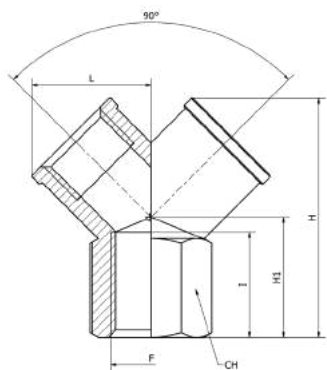
Y Verteiler Außengewinde konisches Gewinde

Y simple mâle, conique BSPT

Racor a Y macho cónico con tórica BSPT

CODICE/CODE	F"	F1"	I	I1	H1	L	H	CH	PEZZI/PIECES
<b>AS75K0018</b>	R1/8	G1/8	8	8	16	14,5	32	13	10
<b>AS75K0014</b>	R1/4	G1/4	11	11	20	18	38	17	10
<b>AS75K0038</b>	R3/8	G3/8	11,5	11,5	22	20,5	42,5	20	10
<b>AS75K0012</b>	R1/2	G1/2	14	14	27	26,5	53	25	10

## AS 76



**Y femmina cilindrico BSPP**

Y female parallel BSPP

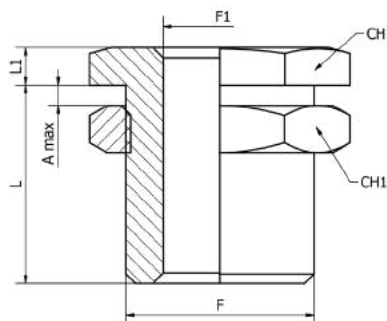
Y Verteiler Innengewinde

Y simple femelle, cylindrique BSPP

Racor a y hembra cónica con tórica BSPP

CODICE/CODE	F"	I	H1	L	H	CH	PEZZI/PIECES
<b>AS760018</b>	G1/8	8	12	14,5	26,5	13	10
<b>AS760014</b>	G1/4	11	14	18	32	17	10
<b>AS760038</b>	G3/8	11,5	16	20,5	37	20	10
<b>AS760012</b>	G1/2	14	19	26,5	45	25	10

## AS 77



**Diritto femmina passalamiera cilindrico BSPP-metrico**

Straight female bulkhead parallel BSPP -metric

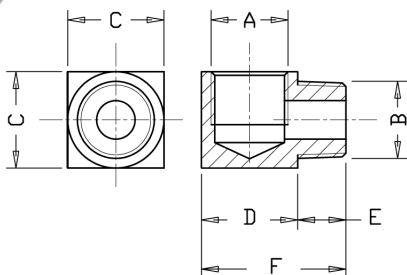
Schottverschraubung

Traversée de cloison cylindrique BSPP-métrique

Racor pasatabiques cilíndrico BSPP-métrico

CODICE/CODE	F"	F1"	A max	L	L1	CH	CH1	PEZZI/PIECES
<b>AS7700M5</b>	M10x1	M5	7	10,5	3,5	14	14	10
<b>AS770018</b>	M16x1.5	G1/8	10	14	4	19	22	10
<b>AS770014</b>	M20x1.5	G1/4	16	21	4	24	27	10
<b>AS770038</b>	M26x1.5	G3/8	15	21	5	30	32	10
<b>AS770012</b>	M28x1.5	G1/2	21	27	6	32	36	10

## AS 80K



**L maschio conico BSPT femmina cilindrico BSPP-metrico**

Elbow male taper BSPT female parallel BSPP-metric

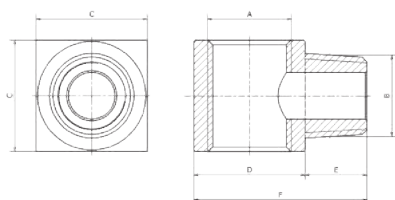
Winkelverschraubung konisches Gewindeisch/zyllindrisch-metrisch

Raccord L mâle / femelle

Racor a L macho-hembra

CODICE/CODE	A"	B"	C	D	E	F	PEZZI/PIECES
<b>AS80M5M5</b>	M5	M5	9	9	4,6	13,6	10
<b>AS80K1818</b>	G1/8	R1/8	14	14	8	22	10
<b>AS80K1814</b>	G1/8	R1/4	18	18	8	26	10
<b>AS80K1418</b>	G1/4	R1/8	18	18	10	28	10
<b>AS80K1414</b>	G1/4	R1/4	18	18	10	28	10
<b>AS80K1438</b>	G1/4	R3/8	20	21	10	31	10
<b>AS80K3814</b>	G3/8	R1/4	20	21	11	32	10
<b>AS80K3838</b>	G3/8	R3/8	20	21	11	32	10

## AS 81K



**T maschio conico BSPT femmina cilindrico BSPP-metrico**

T male taper BSPT female parallel BSPP-metric

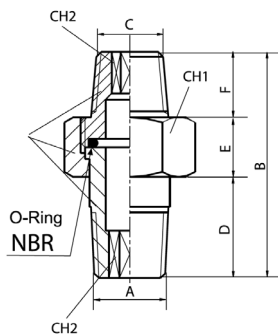
T-Stück konisches Gewindeisch/zyllindrisch-metrisch

Raccord té mâle / femelle

Racor a T macho-hembra

CODICE/CODE	A"	B"	C	D	E	F	PEZZI/PIECES
<b>AS81M5M5</b>	M5	M5	9	9	4,6	13,6	10
<b>AS81K1818</b>	G1/8	R1/8	14	14	9	22	10
<b>AS81K1414</b>	G1/4	R1/4	18	18	10	28	10
<b>AS81K3838</b>	G3/8	R3/8	20	21	11	32	10

## AS 82K



**Raccordo a 3 pezzi conico BSPT**

Three pieces union taper BSPT

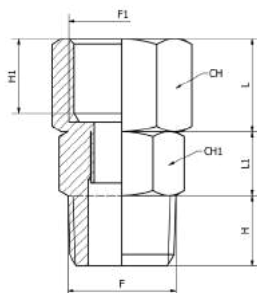
Doppelnippel lösbar konisches Gewinde

Raccord 3 pièces conique BSPT

Racor 3 piezas cónico BSPT

CODICE/CODE	A"	B	C"	D	E	F	CH1	CH2	PEZZI/PIECES
<b>AS82K1818</b>	R1/8	33	R1/8	15	8,5	9,5	15	5	10
<b>AS82K1814</b>	R1/8	34	R1/4	15	8,5	10,5	15	5	10
<b>AS82K1414</b>	R1/4	38	R1/4	17	10	11	19	6	10
<b>AS82K1438</b>	R1/4	40	R3/8	17	10	13	19	6	10
<b>AS82K3838</b>	R3/8	52	R3/8	23	16	13	26	10	10
<b>AS82K3812</b>	R3/8	53	R1/2	23	16	14	26	10	10
<b>AS82K1212</b>	R1/2	54	R1/2	24	16	14	30	12	10

## AS 83KG



**Nipplo conico girevole**

Nipple taper (rotating body)

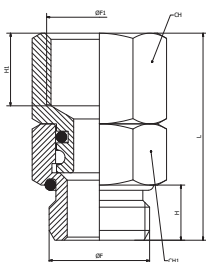
Doppelnippel drehbar konisches Gewinde

Mamelon double conique orientable

Machón cónico orientable

CODICE/CODE	F	F1	L	H	H1	CH	CH1	PEZZI/PIECES
<b>AS83KG1818</b>	R1/8	G1/8	28	8	8	12	13	10
<b>AS83KG1414</b>	R1/4	G1/4	34	11	11	14	16	10
<b>AS83KG3838</b>	R3/8	G3/8	35,5	11,5	11,5	17	19	10

## AS 83G

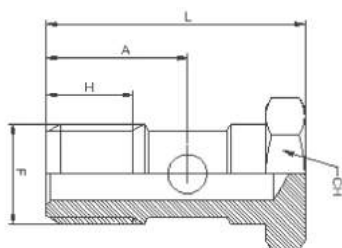


### 🇮🇹 Nipplo cilindrico girevole con O-Ring

- 🇬🇧 Nipple parallel (rotating body) with O-Ring
- 🇩🇪 Doppelnippel drehbar zylindrisches Gewinde mit O-Ring
- 🇫🇷 Mamelon double conique orientable avec O-ring
- 🇪🇸 Machón cónico orientable con O-ring

CODICE/CODE	F	F1	L	H	H1	CH	CH1	PEZZI/PIECES
<b>AS83G1818</b>	G1/8	G1/8	27	6,5	8	13	13	10
<b>AS83G1414</b>	G1/4	G1/4	32	8	11	16	16	10
<b>AS83G3838</b>	G3/8	G3/8	33,5	9	11,5	19	19	10

## AS 87



### 🇮🇹 Asta 1 posizione cilindrico BSPP-metrico

- 🇬🇧 Steam 1 position parallel BSPP-metric
- 🇩🇪 Drosselschraube einfach
- 🇫🇷 Vis une position cylindrique BSPP-métrique
- 🇪🇸 Tornillo una posición cilíndrico BSPP-métrico

CODICE/CODE	F"	A	H	L	CH	PEZZI/PIECES
<b>AS8700M5</b>	M5	9,5	6,5	18	8	10
<b>AS870018</b>	G1/8	15	9	27	14	10
<b>AS870014</b>	G1/4	16,5	11	29,5	17	10
<b>AS870038</b>	G3/8	17	12	31	19	10
<b>AS870012</b>	G1/2	24	16	42	27	10

#### Nota: Articolo da assemblare con RC 65 - RC 66 - RC 72

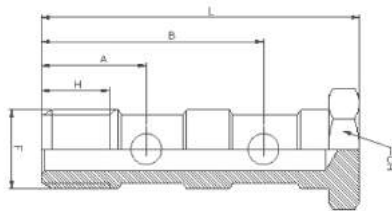
Note: Item to be assembled with RC 65 - RC 66 - RC 72

Hinweis: Zu montierender Artikel mit RC 65 - RC 66 - RC 72

Note: Article à assembler avec RC 65 - RC 66 - RC 72

Nota: Artículo que se ensamblará con RC 65 - RC 66 - RC 72

## AS 88



### 🇮🇹 Asta doppia cilindrico BSPP

- 🇬🇧 Steam 2 positions parallel BSPP
- 🇩🇪 Drosselschraube zweifach
- 🇫🇷 Vis double cylindrique BSPP
- 🇪🇸 Tornillo doble cilíndrico BSPP

CODICE/CODE	F"	H	A	B	L	CH	PEZZI/PIECES
<b>AS880018</b>	G1/8	9	15	31	44,5	14	10
<b>AS880014</b>	G1/4	11	17	36	51,5	17	10
<b>AS880038</b>	G3/8	12	20,5	42	58,6	22	10
<b>AS880012</b>	G1/2	14	24	50	68	27	10

#### Nota: Articolo da assemblare con RC 65 - RC 66 - RC 72

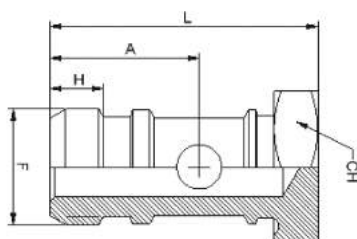
Note: Item to be assembled with RC 65 - RC 66 - RC 72

Hinweis: Zu montierender Artikel mit RC 65 - RC 66 - RC 72

Note: Article à assembler avec RC 65 - RC 66 - RC 72

Nota: Artículo que se ensamblará con RC 65 - RC 66 - RC 72

## AS 87OR



### 🇮🇹 Asta singola cilindrica BSPP con O-ring

- 🇬🇧 Steam single parallel BSPP with O-ring
- 🇩🇪 Drosselschraibe einfach mit O-Ring
- 🇫🇷 Vis unique cylindrique BSPP avec O-ring
- 🇪🇸 Tornillo solo cilíndrico BSPP con O-ring

CODICE/CODE	F"	H	A	L	CH	PEZZI/PIECES
<b>AS87OR18</b>	G1/8	4,5	13,75	25	14	10
<b>AS87OR14</b>	G1/4	6	16,7	30	17	10
<b>AS87OR38</b>	G3/8	6	18	34	22	10

#### Nota: Articolo da assemblare con RT 63 - RT 64 - RK 63 - RK 64

Note: Item to be assembled with RT 63 - RT 64 - RK 63 - RK 64

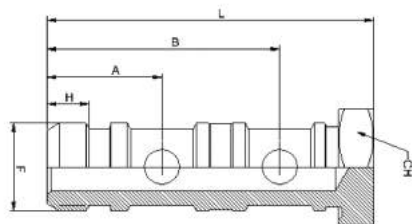
Hinweis: Zu montierender Artikel mit RT 63 - RT 64 - RK 63 - RK 64

Note: Article à assembler avec RT 63 - RT 64 - RK 63 - RK 64

Nota: Artículo que se ensamblará con RT 63 - RT 64 - RK 63 - RK 64



## AS 88OR



### 🇮🇹 Asta doppia cilindrica BSPP con O-ring

- 🇬🇧 Steam double parallel BSPP with O-ring
- 🇩🇪 Drosselschraibe zweifach mit O-Ring
- 🇫🇷 Vis double cylindrique BSPP avec O-ring
- 🇪🇸 Tornillo doble cilíndrico BSPP con O-ring

CODICE/CODE	F"	H	A	B	L	CH	PEZZI/PIECES
<b>AS88OR18</b>	G1/8	4,5	13	29	40	14	10
<b>AS88OR14</b>	G1/4	6	16,5	33,5	47	17	10
<b>AS88OR38</b>	G3/8	8,5	17	37,6	52,5	22	10
<b>AS88OR12</b>	G1/2	10,8	21	45	63	27	10

**Nota: Articolo da assemblare con RT 63 - RT 64 - RK 63 - RK 64**

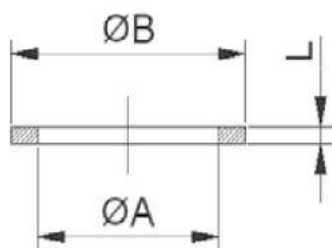
Note: Item to be assembled with RT 63 - RT 64 - RK 63 - RK 64

Hinweis: Zu montierender Artikel mit RT 63 - RT 64 - RK 63 - RK 64

Note: Article à assembler avec RT 63 - RT 64 - RK 63 - RK 64

Nota: Artículo que se ensamblará con RT 63 - RT 64 - RK 63 - RK 64

## AS 91



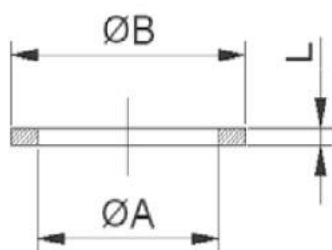
N = NYLON

### 🇮🇹 Rondelle in nylon/alluminio

- 🇬🇧 Washers in nylon/aluminum
- 🇩🇪 Dichtungen Nylon/Aluminium
- 🇫🇷 Joint en nylon/aluminium
- 🇪🇸 Arandela en nylon/aluminio

CODICE/CODE	ØA	ØB	L	PEZZI/PIECES
<b>AS91N00M5</b>	M5	8,5	1,5	100
<b>AS91N0018</b>	G1/8	14	1,5	100
<b>AS91N0014</b>	G1/4	18	1,5	100
<b>AS91N0038</b>	G3/8	21	1,5	100
<b>AS91N0012</b>	G1/2	26	1,5	100
<b>AS91N0034</b>	G3/4	26,7	2,5	100
<b>AS910018</b>	G1/8	14	1,5	100
<b>AS910014</b>	G1/4	17,3	1,5	100
<b>AS910038</b>	G3/8	21	1,5	100
<b>AS910012</b>	G1/2	26	1,5	100
<b>AS910034</b>	G3/4	34	1,5	100
<b>AS910001</b>	G1	41	1,5	100

## AS 92N



### 🇮🇹 Rondella in nylon dentellata

- 🇬🇧 Nylon washers serrated
- 🇩🇪 Dichtungen Nylon gezähnt
- 🇫🇷 Joint imperdable en nylon
- 🇪🇸 Arandela dentada en nylon

CODICE/CODE	ØA	ØB	L	PEZZI/PIECES
<b>AS92N00M5</b>	M5	8	1	100
<b>AS92N0018</b>	G1/8	14	1,5	100
<b>AS92N0014</b>	G1/4	18	1,5	100
<b>AS92N0038</b>	G3/8	21	1,5	100
<b>AS92N0012</b>	G1/2	26	1,5	100